



智慧能源 / 绿色建筑 / 新型农业 系统集成商  
SMART ENERGY / GREEN BUILDING / INNOVATIVE AGRICULTURAL SYSTEM INTEGRATOR



智慧能源 / 绿色建筑 / 新型农业 系统集成商  
SMART ENERGY / GREEN BUILDING / INNOVATIVE AGRICULTURAL SYSTEM INTEGRATOR

# 折叠式光伏发电舱 Solar Power Container



## 公司介绍 / Company Profile



无锡申泰新能源科技有限公司成立于2016年，坐落于国内太阳能光伏产业基地江苏无锡市，是一家以新能源光伏发电及储能业务为基础，以新建筑装配式房屋、新农业分布式种植业务为战略储备，集自主研发、生产、销售及服务为一体的高新技术企业，致力于向全球用户提供全生命周期智慧能源、智能建筑、智慧种植的整体解决方案。

公司目前已申请60余件国家商标及版权，1件国际商标，40余件专利，7件国家发明专利及8件软著；拥有TUV、CE、ISO等国际认证证书；已获得“新四板企业、国家高新技术企业、创新型中小企业、雏鹰三类企业、三星上云企业、科技型中小企业、江苏省民营科技企业”等。

Senta Energy Co., Ltd. was founded in 2016, located in Wuxi, Jiangsu province, the birthplace of the PV industry in China. We focus on solar power system and energy storage business, with new building and new agricultural distributed planting business as the strategic reserve. Set independent research and development, production, sales and service as one of the high-tech enterprises, is committed to providing global users with the whole life cycle intelligent energy, intelligent building, intelligent planting overall solutions.

Senta has TUV/CE/ISO and other international certification and management system certification, Applied for more than 60 invention patents and soft publications, more than 40 trademarks and Copyrights. and Senta was Awarded "National HIGH-TECH Enterprise", " Jiangsu Private Science and Technology Enterprise ", " Small and medium-sized science and technology Enterprise ", " Fledgling Enterprise "and other qualifications.

## 生产基地 / Manufacturing Base



## ■ 折叠式光伏发电舱 / Solar PV Container



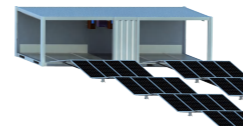
SC08GP-M-20K P1



SC10GP-M-40K P2



SC20GP-M-80K P3  
SC20HQ-M-100K P4



SC40GP-M-160K P5  
SC40HQ-M-200K P6

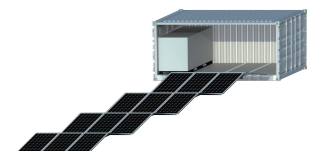
## ■ 折叠式发电储能舱 / Solar ESS Container



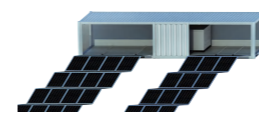
SC08GP-M-18K20 P7



SC10GP-M-30K40 P8



SC20GP-M-60K215 P9  
SC20HQ-M-75K215 P10



SC40GP-M-140K215 P11



SC40HQ-M-150K430 P12

## ■ 产品特性 / Product Features

**快速组装**  
Fast assembly

**安装简单**  
Simple to install

**灵活便捷**  
Flexible

**安全可靠**  
Safe and reliable

**即插即用**  
Plug and play

**模块化**  
Modularized

## 折叠式光伏发电舱 / Solar PV Container- SC08GP-M-20K



### Overall Configurations

Package	Package Products Model	SC08GP-M-20K
	Solar Array Capacity (Pmax / kWp)	21.6
	Total Weight (Tons)	5.9
	Unfolded Footprint (L*W*H/m)	63*2.2*0.5
	Folded Footprint (L*W*H/m)	2.2*1.7*1.7
	Max. Slope Limit	1%
	Orientation	Any azimuth
	Complete unfolding Time (mins)	60
	Complete folding Time (mins)	50
	Installation Persons	4

#### ① Container

Type of Container	8GP
External Dimensions (L*W*H/mm)	2900*2200*2200
Container Weight (Tons)	1.6

#### ③ Inverter

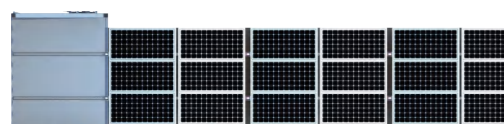
Module Type	SUN-20K-G03
Inverter Type	On grid
Quantity of inverters (sets)	1
Max.PV Power(Pmax/Wp)	26000
Nominal AC output power (W)	20000
Maximum AC output power(W)	22000
Nominal AC voltage(V)	3L/N/PE 220/380V, 230/400V
AC grid frequency range(Hz)	50 / 60 (Optional)
Maximum output current(A)	33.3/31.9
Dimensions(WxHxD/mm)	330x508x206
Weight(kg)	20.8
Operating temperature range(°C)	-25~65°C, >45°C derating
Communication	RS485/RS232/Wifi/LAN

#### ② Solar Panel

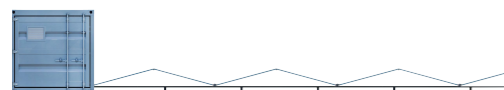
Module Type	SKT200
Max.Power(Pmax/Wp)	200
Max. Power Voltage (Vm / V)	24.2
Max. Power Current (Im / A)	8.26
Open Circuit Voltage (Voc / V)	25.7
Short Circuit Current (Isc / A)	9.19
Product Dimensions(mm)	1500*680*30
Weight(Kgs)	15.5
Quantity of solar panels (pcs)	108

#### ④ Bracket

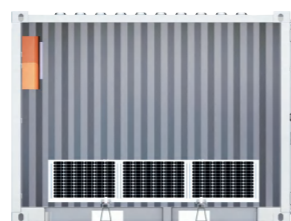
Material	Carbon steel square pipe
Single Bracket Dimension (mm)	2190*1693*30
Number of single frame installation panels	3
Angle of Unfolding Bracket (°)	15
Length of Unfolding Bracket (m)	58
Project area of Unfolding Bracket (m²)	127
Quantity of bracket (page)	36



Top View



Side View



Front View

## 折叠式光伏发电舱 / Solar PV Container- SC10GP-M-40K



### Overall Configurations

Package	Package Products Model	SC10GP-M-40K
	Solar Array Capacity (Pmax / kWp)	40.32
	Total Weight (Tons)	7.1
	Unfolded Footprint (L*W*H/m)	91*2.4*0.8
	Folded Footprint (L*W*H/m)	2.4*2.1*2.0
	Max. Slope Limit	1%
	Orientation	Any azimuth
	Complete unfolding Time (mins)	80
	Complete folding Time (mins)	60
	Installation Persons	4

#### ① Container

Type of Container	10GP
External Dimensions (L*W*H/mm)	2991*2438*2591
Container Weight (Tons)	1.7

#### ③ Inverter

Module Type	SUN-40K-G03
Inverter Type	On grid
Quantity of inverters (sets)	1
Max.PV Power(Pmax/Wp)	52000
Nominal AC output power (W)	40000
Maximum AC output power(W)	44000
Nominal AC voltage(V)	3L/N/PE 220/380V, 230/400V
AC grid frequency range(Hz)	50 / 60 (Optional)
Maximum output current(A)	66.7/63.8
Dimensions(WxHxD/mm)	647.5x537x303.5
Weight(kg)	44.5
Operating temperature range(°C)	-25~65°C, >45°C derating
Communication	RS485/RS232/Wifi/LAN

#### ② Solar Panel

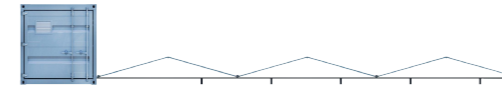
Module Type	LNK-480ND
Max.Power(Pmax/Wp)	480
Max. Power Voltage (Vm / V)	35.69
Max. Power Current (Im / A)	13.45
Open Circuit Voltage (Voc / V)	43.36
Short Circuit Current (Isc / A)	14.16
Product Dimensions(mm)	1910*1134*30
Weight(Kgs)	26
Quantity of solar panels (pcs)	84

#### ④ Bracket

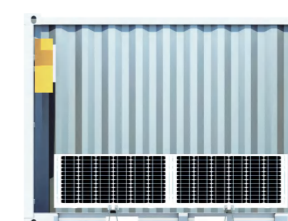
Material	Carbon steel square pipe
Single Bracket Dimension (mm)	2378*2103*30
Number of single frame installation panels	2
Angle of Unfolding Bracket (°)	15
Length of Unfolding Bracket (m)	84
Project area of Unfolding Bracket (m²)	200
Quantity of bracket (page)	42



Top View



Side View



Front View

## 折叠式光伏发电舱 / Solar PV Container- SC20GP-M-80K



### Overall Configurations

Package	Package Products Model	SC20GP-M-80K
	Solar Array Capacity (Pmax / kWp)	80.6
	Total Weight (Tons)	11
	Unfolded Footprint (L*W*H/m)	91*4.8*0.8
	Folded Footprint (L*W*H/m)	4.8*2.0*2.1
	Max. Slope Limit	1%
	Orientation	Any azimuth
	Complete unfolding Time (mins)	120
	Complete folding Time (mins)	60
	Installation Persons	4

#### ① Container

Module Type	20GP
External Dimensions (L*W*H/mm)	6058*2438*2591
Container Weight (Tons)	2.2

#### ③ Inverter

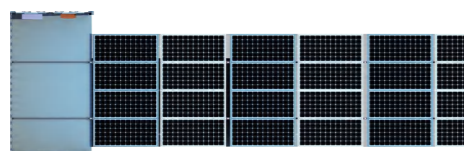
Module Type	SUN-80K-G03
Inverter Type	On grid
Quantity of inverters (sets)	1
Max.PV Power(Pmax/Wp)	104000
Nominal AC output power (W)	80000
Maximum AC output power(W)	88000
Nominal AC voltage(V)	3L/N/PE 220/380V 230/400V
AC grid frequency range(Hz)	50 / 60 (Optional)
Maximum output current(A)	133.3/127.5
Dimensions(WxHxD/mm)	838*568*324
Weight(kg)	81
Operating temperature range(°C)	-25~65°C, >45°C derating
Communication	RS485/RS232/Wifi/LAN

#### ② Solar Panel

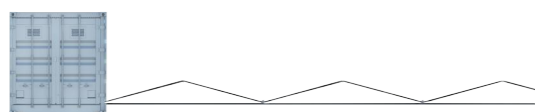
Module Type	LNVK-480ND
Max.Power(Pmax/Wp)	480
Max. Power Voltage (Vm / V)	35.69
Max. Power Current (Im / A)	13.45
Open Circuit Voltage (Voc / V)	43.36
Short Circuit Current (Isc / A)	14.16
Product Dimensions(mm)	1910*1134*30
Weight(Kgs)	26
Quantity of solar panels (pcs)	168

#### ④ Bracket

Material	Carbon steel square pipe
Material Specification	4726*2103*30
Number of single frame installation panels	4
Angle of Unfolding Bracket (°)	15
Length of Unfolding Bracket (m)	84
Project area of Unfolding Bracket (m²)	395
Quantity of bracket (page)	42



Top View

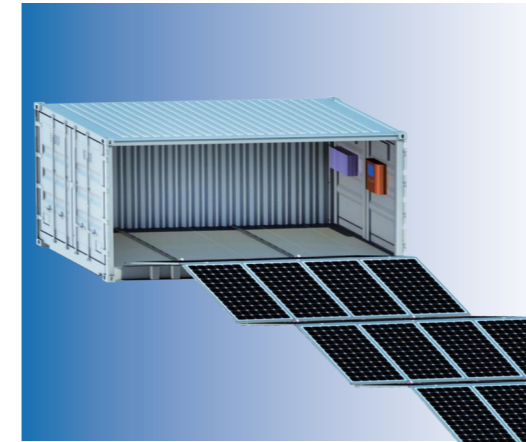


Side View



Front View

## 折叠式光伏发电舱 / Solar PV Container- SC20HQ-M-100K



### Overall Configurations

Package	Package Products Model	SC20HQ-M-100K
	Solar Array Capacity (Pmax / kWp)	102.4
	Total Weight (Tons)	13.5
	Unfolded Footprint (L*W*H/m)	102*5.4*0.9
	Folded Footprint (L*W*H/m)	5.4*2.4*2.2
	Max. Slope Limit	1%
	Orientation	Any azimuth
	Complete unfolding Time (mins)	120
	Complete folding Time (mins)	80
	Installation Persons	6

#### ① Container

Module Type	20HQ
External Dimensions (L*W*H/mm)	6058*2438*2896
Container Weight (Tons)	2.5

#### ③ Inverter

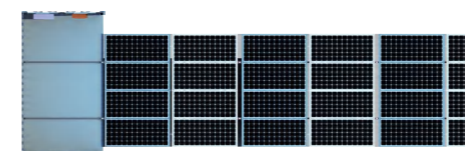
Module Type	SUN-100K-G03
Inverter Type	On grid
Quantity of inverters (sets)	1
Max.PV Power(Pmax/Wp)	150000
Nominal AC output power (W)	100000
Maximum AC output power(W)	111000
Nominal AC voltage(V)	3L/N/PE 220/380V 230/400V
AC grid frequency range(Hz)	50 / 60 (Optional)
Maximum output current(A)	166.7/159.4
Dimensions(WxHxD/mm)	838*568*324
Weight(kg)	81
Operating temperature range(°C)	-25~65°C, >45°C derating
Communication	RS485/RS232/Wifi/LAN

#### ② Solar Panel

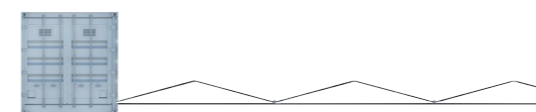
Module Type	DG610W
Max.Power(Pmax/Wp)	610
Max. Power Voltage (Vm / V)	34.98
Max. Power Current (Im / A)	17.44
Open Circuit Voltage (Voc / V)	41.52
Short Circuit Current (Isc / A)	18.40
Product Dimensions(mm)	2172*1303*35
Weight(Kgs)	34.5
Quantity of solar panels (pcs)	168

#### ④ Bracket

Material	Carbon steel square pipe
Material Specification	5427*2375*35
Number of single frame installation panels	4
Angle of Unfolding Bracket (°)	15
Length of Unfolding Bracket (m)	95
Project area of Unfolding Bracket (m²)	515
Quantity of bracket (page)	42



Top View



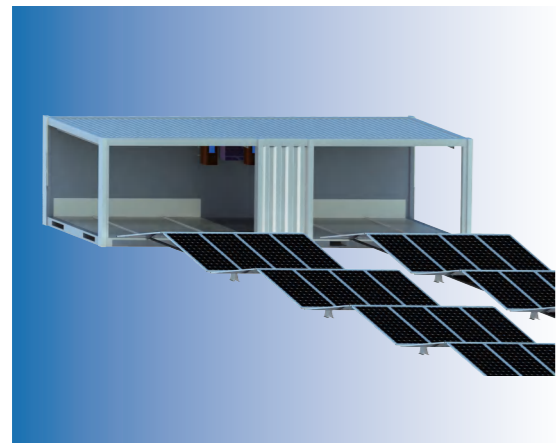
Side View



Front View

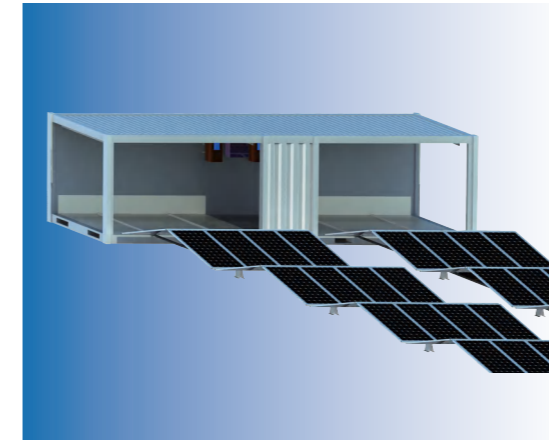
## 折叠式光伏发电舱 / Solar PV Container- SC40GP-M-160K

## 折叠式光伏发电舱 / Solar PV Container- SC40HQ-M-200K



### Overall Configurations

Package	Package Products Model	SC40GP-M-160K
	Solar Array Capacity (Pmax / kWp)	161.3
	Total Weight (Tons)	21.5
	Unfolded Footprint (L*W*H/m)	91*9.5*0.8
	Folded Footprint (L*W*H/m)	9.5*2.0*2.1
	Max. Slope Limit	1%
	Orientation	Any azimuth
	Complete unfolding Time (mins)	160
	Complete folding Time (mins)	100
	Installation Persons	8



### Overall Configurations

Package	Package Products Model	SC40HQ-M-200K
	Solar Array Capacity (Pmax / kWp)	204.9
	Total Weight (Tons)	26.5
	Unfolded Footprint (L*W*H/m)	102*10.8*0.9
	Folded Footprint (L*W*H/m)	10.8*2.4*2.2
	Max. Slope Limit	1%
	Orientation	Any azimuth
	Complete unfolding Time (mins)	200
	Complete folding Time (mins)	120
	Installation Persons	8

#### ① Container

Module Type	40GP
External Dimensions (L*W*H/mm)	12192*2438*2591
Container Weight (Tons)	4.2

#### ③ Inverter

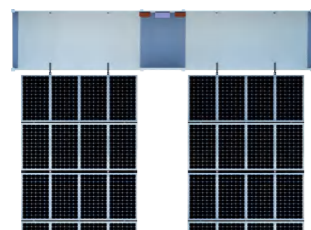
Module Type	SUN-80K-G03
Inverter Type	On grid
Quantity of inverters (sets)	2
Max.PV Power(Pmax/Wp)	104000
Nominal AC output power (W)	80000
Maximum AC output power(W)	88000
Nominal AC voltage(V)	3L/N/PE 220/380V 230/400V
AC grid frequency range(Hz)	50 / 60 (Optional)
Maximum output current(A)	133.3/127.5
Dimensions(WxHxD/mm)	838*568*324
Weight(kg)	81
Operating temperature range(°C)	-25~65°C, >45°C derating
Communication	RS485/RS232/Wifi/LAN

#### ② Solar Panel

Module Type	LNVK-480ND
Max.Power(Pmax/Wp)	480
Max. Power Voltage (Vm / V)	35.69
Max. Power Current (Im / A)	13.45
Open Circuit Voltage (Voc / V)	43.36
Short Circuit Current (Isc / A)	14.16
Product Dimensions(mm)	1910*1134*30
Weight(Kgs)	26
Quantity of solar panels (pcs)	336

#### ④ Bracket (1/2)

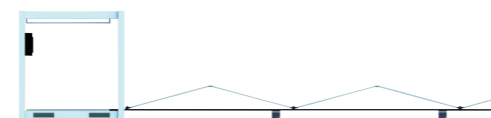
Material	Carbon steel square pipe
Material Specification	4726*2103*30
Number of single frame installation panels	4
Angle of Unfolding Bracket (°)	15
Length of Unfolding Bracket (m)	84
Project area of Unfolding Bracket (m²)	395
Quantity of bracket (page)	42



Top View



Front View



Side View

#### ① Container

Module Type	40HQ
External Dimensions (L*W*H/mm)	12192*2438*2896
Container Weight (Tons)	4.8

#### ③ Inverter

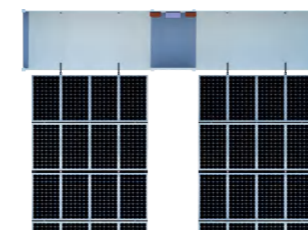
Module Type	SUN-100K-G03
Inverter Type	On grid
Quantity of inverters (sets)	2
Max.PV Power(Pmax/Wp)	150000
Nominal AC output power (W)	100000
Maximum AC output power(W)	111000
Nominal AC voltage(V)	3L/N/PE 220/380V 230/400V
AC grid frequency range(Hz)	50 / 60 (Optional)
Maximum output current(A)	166.7/159.4
Dimensions(WxHxD/mm)	838*568*324
Weight(kg)	81
Operating temperature range(°C)	-25~65°C, >45°C derating
Communication	RS485/RS232/Wifi/LAN

#### ② Solar Panel

Module Type	DG610W
Max.Power(Pmax/Wp)	610
Max. Power Voltage (Vm / V)	34.98
Max. Power Current (Im / A)	17.44
Open Circuit Voltage (Voc / V)	41.52
Short Circuit Current (Isc / A)	18.40
Product Dimensions(mm)	2172*1303*35
Weight(Kgs)	34.5
Quantity of solar panels (pcs)	336

#### ④ Bracket (1/2)

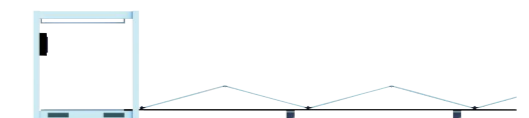
Material	Carbon steel square pipe
Material Specification	5427*2375*35
Number of single frame installation panels	4
Angle of Unfolding Bracket (°)	15
Length of Unfolding Bracket (m)	95
Project area of Unfolding Bracket (m²)	515
Quantity of bracket (page)	42



Top View

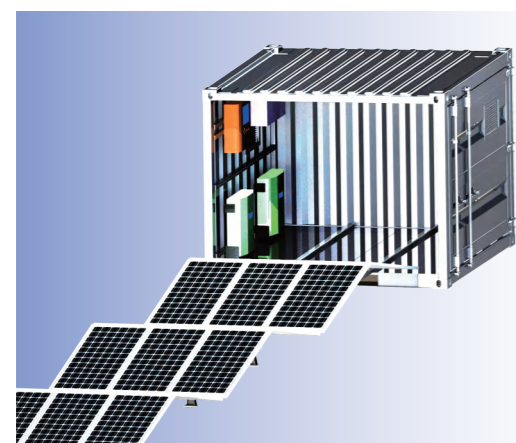


Front View



Side View

## 折叠式发电储能舱 / Solar ESS Container- SC08GP-M-18K20



### Overall Configurations

Package	Package Products Model	SC08GP-M-18K20
	Solar Array Capacity (Pmax / kWp)	18
	Total Weight (Tons)	5.5
	Unfolded Footprint (L*W*H/m)	53*2.2*0.5
	Folded Footprint (L*W*H/m)	2.2*1.4*1.7
	Max. Slope Limit	1%
	Orientation	Any azimuth
	Complete unfolding Time (mins)	50
	Complete folding Time (mins)	30
	Installation Persons	4

#### ① Container

Type of Container	8GP
External Dimensions (L*W*H/mm)	2900*2200*2200
Container Weight (Tons)	1.6

#### ② Solar Panel

Module Type	SKT200
Max.Power(Pmax/Wp)	200
Max. Power Voltage (Vm / V)	24.2
Max. Power Current (Im / A)	8.26
Open Circuit Voltage (Voc / V)	25.7
Short Circuit Current (Isc / A)	9.19
Product Dimensions(mm)	1500*680*30
Weight(Kgs)	15.5
Quantity of solar panels (pcs)	90

#### ③ Inverter

Module Type	SUN-10K-SG04LP3-EU
Inverter Type	Hybrid
Quantity of inverters (sets)	2
Max.PV Power(Pmax/Wp)	13000
Nominal AC output power (W)	10000
Maximum AC output power(W)	11000
Nominal AC voltage(V)	3L/N/PE 220/380V, 230/400V
AC grid frequency range(Hz)	50 / 60 (Optional)
Maximum output current(A)	16.7/15.9
Dimensions(WxHxD/mm)	422x702x281
Weight(kg)	33.6
Operating temperature range(°C)	25~65°C, >45°C derating
Communication	RS485/RS232/Wifi/LAN

#### ④ Bracket

Material	Carbon steel square pipe
Single Bracket Dimension (mm)	2190*1693*30
Number of single frame installation panels	3
Angle of Unfolding Bracket (°)	15
Length of Unfolding Bracket (m)	48
Project area of Unfolding Bracket (m²)	105
Quantity of bracket (page)	30

#### ⑤ Energy Storage System

Module Type	LFP 10kWh/ LV
Rated capacity	200Ah
Rated power	10.24kWh
Nominal Dis-charge Power	5kW
Peak Power(Only Discharge)	10kW for 3 seconds
Rated voltage	51.2V d.c
Dimensions(WxHxD/mm)	585*940*205
Weight(kg)	116.5
Communication	CAN/RS485
Operating temperature range	-30°C~+50°C, (>45°C Derating)
Quantity of Battery (set)	2

#### ⑥ Diesel Generator

Module Type	KDE6700X3
Rated output	5.5KVA
Max. output	6KVA
Rated frequency	50HZ
Rated Voltage	203/400V
Rated current	7.9A
Overall dimension(L×W×H/mm)	720×492×650
Weight(kg)	95
Quantity of DG (set)	1

## 折叠式发电储能舱 / Solar ESS Container- SC10GP-M-30K40



### Overall Configurations

Package	Package Products Model	SC10GP-M-30K40
	Solar Array Capacity (Pmax / kWp)	30.7
	Total Weight (Tons)	6.5
	Unfolded Footprint (L*W*H/m)	69*2.4*0.8
	Folded Footprint (L*W*H/m)	2.4*1.5*2.1
	Max. Slope Limit	1%
	Orientation	Any azimuth
	Complete unfolding Time (mins)	60
	Complete folding Time (mins)	50
	Installation Persons	4

#### ① Container

Type of Container	10GP
External Dimensions (L*W*H/mm)	2991*2438*2591
Container Weight (Tons)	1.7

#### ② Solar Panel

Module Type	LNK-480ND
Max.Power(Pmax/Wp)	480
Max. Power Voltage (Vm / V)	35.69
Max. Power Current (Im / A)	13.45
Open Circuit Voltage (Voc / V)	43.36
Short Circuit Current (Isc / A)	14.16
Product Dimensions(mm)	1910*1134*30
Weight(Kgs)	26
Quantity of solar panels (pcs)	64

#### ③ Inverter

Module Type	SUN-12K-SG04LP3-EU
Inverter Type	Hybrid
Quantity of inverters (sets)	2
Max.PV Power(Pmax/Wp)	15600
Nominal AC output power (W)	12000
Maximum AC output power(W)	13200
Nominal AC voltage(V)	3L/N/PE 220/380V, 230/400V
AC grid frequency range(Hz)	50 / 60 (Optional)
Maximum output current(A)	20/19.1
Dimensions(WxHxD/mm)	422×702×281
Weight(kg)	33.6
Operating temperature range(°C)	-25~65°C, >45°C derating
Communication	RS485/RS232/Wifi/LAN

#### ④ Bracket

Material	Carbon steel square pipe
Single Bracket Dimension (mm)	2378*2103*30
Number of single frame installation panels	2
Angle of Unfolding Bracket (°)	15
Length of Unfolding Bracket (m)	64
Project area of Unfolding Bracket (m²)	154
Quantity of bracket (page)	32

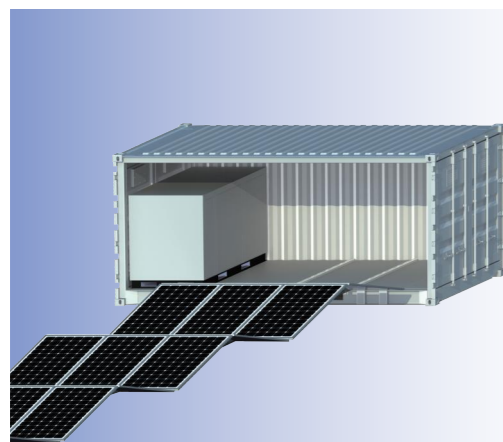
#### ⑤ Energy Storage System

Module Type	LFP 10kWh/ LV
Rated capacity	200Ah
Rated power	10.24kWh
Nominal Dis-charge Power	5kW
Peak Power(Only Discharge)	10kW for 3 seconds
Rated voltage	51.2V d.c
Dimensions(WxHxD/mm)	585*940*205
Weight(kg)	116.5
Communication	CAN/RS485
Operating temperature range	-30°C~+50°C, (>45°C Derating)
Quantity of Battery (set)	4

#### ⑥ Diesel Generator

Module Type	KDE6700X3
Rated output	5.5KVA
Max. output	6KVA
Rated frequency	50HZ
Rated Voltage	203/400V
Rated current	7.9A
Overall dimension(L×W×H/mm)	720×492×650
Weight(kg)	95
Quantity of DG (set)	1

## 折叠式发电储能舱 / Solar ESS Container- SC20GP-M-60K215



### Overall Configurations

Package	Package Products Model	SC20GP-M-60K215
	Solar Array Capacity (Pmax / kWp)	60.5
	Total Weight (Tons)	13.6
	Unfolded Footprint (L*W*H/m)	91*3.6*0.8
	Folded Footprint (L*W*H/m)	3.6*2.0*2.1
	Max. Slope Limit	1%
	Orientation	Any azimuth
	Complete unfolding Time (mins)	80
	Complete folding Time (mins)	60
	Installation Persons	4

#### ① Container

Type of Container	20GP
External Dimensions (L*W*H/mm)	6058*2438*2591
Container Weight (Tons)	2.2

#### ② Solar Panel

Module Type	LNVK-480ND
Max.Power(Pmax/Wp)	480
Max. Power Voltage (Vm / V)	35.69
Max. Power Current (Im / A)	13.45
Open Circuit Voltage (Voc / V)	43.36
Short Circuit Current (Isc / A)	14.16
Product Dimensions(mm)	1910*1134*30
Weight(Kgs)	26
Quantity of solar panels (pcs)	126

#### ③ Energy Storage System

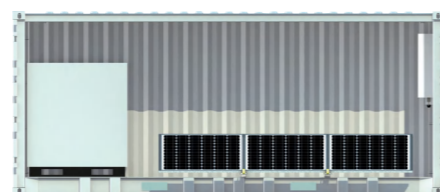
Module Type	DH200F
Cell Capacity	280Ah
Rated power	215kWh
Nominal Power(AC)	100kW
Nominal Frequency	50Hz
Battery Voltage Range	672~864V
Dimensions(WxHxD/mm)	1850*1200*2250
Weight(kg)	~3300kg
Communication	CAN/RS485
Operating temperature range	-30°C~+50°C, (>45°C Derating)

#### ④ Bracket

Material	Carbon steel square pipe
Single Bracket Dimension (mm)	3552*2103*30
Number of single frame installation panels	3
Angle of Unfolding Bracket (°)	15
Length of Unfolding Bracket (m)	84
Project area of Unfolding Bracket (m <sup>2</sup> )	298
Quantity of brackets (pages)	42

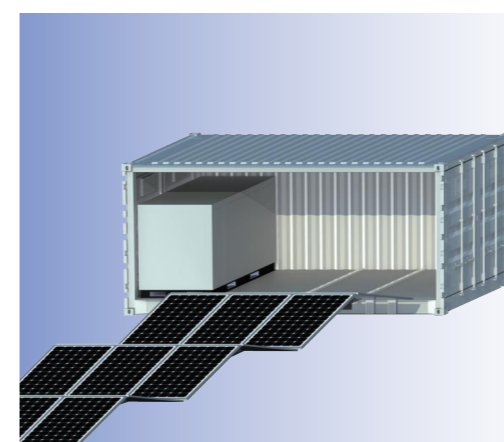
#### ⑤ Diesel Generator

Module Type	KDE16EA3
Rated output	13.8KVA
Max. output	15KVA
Rated frequency	50HZ
Rated Voltage	203/400V
Rated current	47.8A
Overall dimension(LxWxH/mm)	930*660*910
Weight(kg)	230
Quantity of Diesel generator(set)	1



Front View

## 折叠式发电储能舱 / Solar ESS Container- SC20HQ-M-75K215



### Overall Configurations

Package	Package Products Model	SC20HQ-M-75K215
	Solar Array Capacity (Pmax / kWp)	76.8
	Total Weight (Tons)	15.2
	Unfolded Footprint (L*W*H/m)	102*4.1*0.9
	Folded Footprint (L*W*H/m)	4.1*2.2*2.4
	Max. Slope Limit	1%
	Orientation	Any azimuth
	Complete unfolding Time (mins)	100
	Complete folding Time (mins)	80
	Installation Persons	4

#### ① Container

Type of Container	20HQ
External Dimensions (L*W*H/mm)	6058*2438*2896
Container Weight (Tons)	2.5

#### ② Solar Panel

Module Type	DG610W
Max.Power(Pmax/Wp)	610
Max. Power Voltage (Vm / V)	34.98
Max. Power Current (Im / A)	17.44
Open Circuit Voltage (Voc / V)	41.52
Short Circuit Current (Isc / A)	18.40
Product Dimensions(mm)	2172*1303*35
Weight(Kgs)	34.5
Quantity of solar panels (pcs)	126

#### ③ Energy Storage System

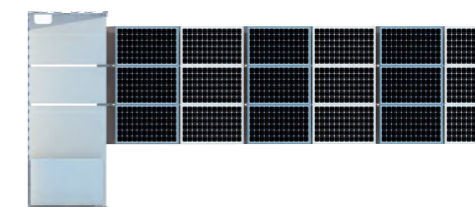
Module Type	DH200F
Cell Capacity	280Ah
Rated power	215kWh
Nominal Power(AC)	100kW
Nominal Frequency	50Hz
Battery Voltage Range	672~864V
Dimensions(WxHxD/mm)	1850*1200*2250
Weight(kg)	~3300kg
Communication	CAN/RS485
Operating temperature range	-30°C~+50°C, (>45°C Derating)

#### ④ Bracket

Material	Carbon steel square pipe
Single Bracket Dimension (mm)	4079*2375*35
Number of single frame installation panels	3
Angle of Unfolding Bracket (°)	15
Length of Unfolding Bracket (m)	95
Project area of Unfolding Bracket (m <sup>2</sup> )	388
Quantity of bracket (page)	42

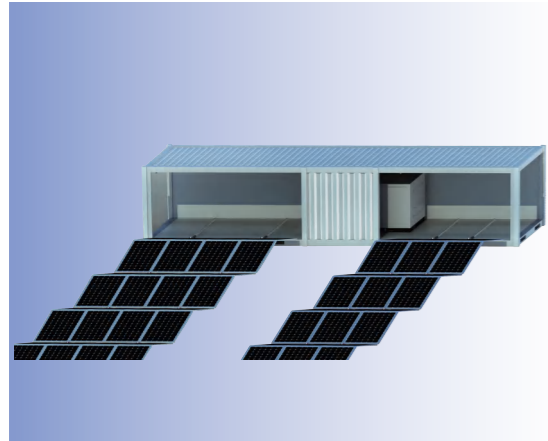
#### ⑤ Diesel Generator

Module Type	KDE16EA3
Rated output	13.8KVA
Max. output	15KVA
Rated frequency	50HZ
Rated Voltage	203/400V
Rated current	47.8A
Overall dimension(LxWxH/mm)	930*660*910
Weight(kg)	230
Quantity of DG (set)	1



Top View

## 折叠式发电储能舱 / Solar ESS Container- SC40GP-M-140K215



### Overall Configurations

Package	Package Products Model	SC40GP-M-140K215
	Solar Array Capacity (Pmax / kWp)	141.1
	Total Weight (Tons)	24.1
	Unfolded Footprint (L*W*H/m)	91*8.3*0.8
	Folded Footprint (L*W*H/m)	8.3*2.0*2.1
	Max. Slope Limit	1%
	Orientation	Any azimuth
	Complete unfolding Time (mins)	160
	Complete folding Time (mins)	90
	Installation Persons	8

#### ① Container

Type of Container	40GP
External Dimensions (L*W*H/mm)	12192*2438*2591
Container Weight (Tons)	4.2

#### ② Solar Panel

Module Type	LNVK-480ND
Max.Power(Pmax/Wp)	480
Max. Power Voltage (Vm / V)	35.69
Max. Power Current (Im / A)	13.45
Open Circuit Voltage (Voc / V)	43.36
Short Circuit Current (Isc / A)	14.16
Product Dimensions(mm)	1910*1134*30
Weight(Kgs)	26
Quantity of solar panels (pcs)	294

#### ③ Inverter

Module Type	SUN-70K-G03
Inverter Type	On grid
Quantity of inverters (sets)	2
Max.PV Power(Pmax/Wp)	91000
Nominal AC output power (W)	70000
Maximum AC output power(W)	77000
Nominal AC voltage(V)	3L/N/PE 220/380V, 230/400V
AC grid frequency range(Hz)	50 / 60 (Optional)
Maximum output current(A)	116.7/111.6
Dimensions(WxHxD/mm)	838*568*324
Weight(kg)	81
Operating temperature range(°C)	-25~65°C, >45°C derating
Communication	RS485/RS232/Wifi/LAN

#### ④ Bracket (1/2)

Material	Carbon steel square pipe
Single Bracket Dimension (mm)	4726*2103*30 / 3552*2103*30
Number of single frame installation panels	4 / 3
Angle of Unfolding Bracket (°)	15 / 15
Length of Unfolding Bracket (m)	84 / 84
Project area of Unfolding Bracket (m²)	395 / 298
Quantity of bracket (page)	42 / 42

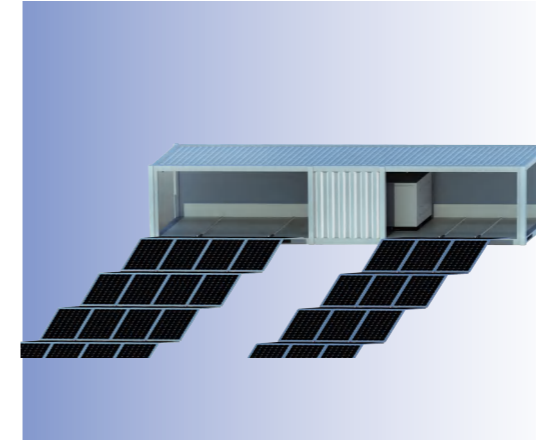
#### ⑤ Energy Storage System

Module Type	DH200F
Cell Capacity	280Ah
Rated power	215kWh
Nominal Power(AC)	100kW
Nominal Frequency	50Hz
Battery Voltage Range	672~864V
Dimensions(WxHxD/mm)	1850*1200*2250
Weight(kg)	≈3300kg
Communication	CAN/RS485
Operating temperature range	-30°C~+50°C, (>45°C Derating)

#### ⑥ Diesel Generator

Module Type	KDE16EA3
Rated output	13.8KVA
Max. output	15KVA
Rated frequency	50HZ
Rated Voltage	203/400V
Rated current	47.8A
Overall dimension(L×W×H/mm)	930*660*910
Weight(kg)	230
Quantity of DG (set)	1

## 折叠式发电储能舱 / Solar ESS Container- SC40HQ-M-150K430



### Overall Configurations

Package	Package Products Model	SC40HQ-M-150K430
	Solar Array Capacity (Pmax / kWp)	153.7
	Total Weight (Tons)	32.4
	Unfolded Footprint (L*W*H/m)	102*8.2*0.9
	Folded Footprint (L*W*H/m)	8.2*2.2*2.4
	Max. Slope Limit	1%
	Orientation	Any azimuth
	Complete unfolding Time (mins)	180
	Complete folding Time (mins)	100
	Installation Persons	8

#### ① Container

Type of Container	40HQ
External Dimensions (L*W*H/mm)	12192*2438*2896
Container Weight (Tons)	4.8

#### ② Solar Panel

Module Type	DG610W
Max.Power(Pmax/Wp)	610
Max. Power Voltage (Vm / V)	34.98
Max. Power Current (Im / A)	17.44
Open Circuit Voltage (Voc / V)	41.52
Short Circuit Current (Isc / A)	18.40
Product Dimensions(mm)	2172*1303*35
Weight(Kgs)	34.5
Quantity of solar panels (pcs)	252

#### ③ Inverter

Module Type	SUN-75K-G03
Inverter Type	On grid
Quantity of inverters (sets)	2
Max.PV Power(Pmax/Wp)	97500
Nominal AC output power (W)	75000
Maximum AC output power(W)	82500
Nominal AC voltage(V)	3L/N/PE 220/380V, 230/400V
AC grid frequency range(Hz)	50 / 60 (Optional)
Maximum output current(A)	125/119.6
Dimensions(WxHxD/mm)	838*568*324
Weight(kg)	81
Operating temperature range(°C)	-25~65°C, >45°C derating
Communication	RS485/RS232/Wifi/LAN

#### ④ Bracket (1/2)

Material	Carbon steel square pipe
Single Bracket Dimension (mm)	4079*2375*35
Number of single frame installation panels	3
Angle of Unfolding Bracket (°)	15
Length of Unfolding Bracket (m)	95
Project area of Unfolding Bracket (m²)	390
Quantity of bracket (page)	42

#### ⑤ Energy Storage System

Module Type	DH200F
Cell Capacity	280Ah
Rated power	215kWh
Nominal Power(AC)	100kW
Nominal Frequency	50Hz
Battery Voltage Range	672~864V
Dimensions(WxHxD/mm)	1850*1200*2250
Weight(kg)	≈3300kg
Communication	CAN/RS485
Operating temperature range	-30°C~+50°C, (>45°C Derating)

#### ⑥ Diesel Generator

Module Type	KDE16EA3
Rated output	13.8KVA
Max. output	15KVA
Rated frequency	50HZ
Rated Voltage	203/400V
Rated current	47.8A
Overall dimension(L×W×H/mm)	930*660*910
Weight(kg)	230
Quantity of DG (set)	1





① 集装箱运输  
Transportation Way



② 吊装就位  
Hoisting in Position



③ 开箱铺设  
Open & Assembly



④ 展开光伏阵列  
Unfold Solar PV Array



⑤ 电气接线安装  
Cable Installation



⑥ 运行工作  
Final Operation

