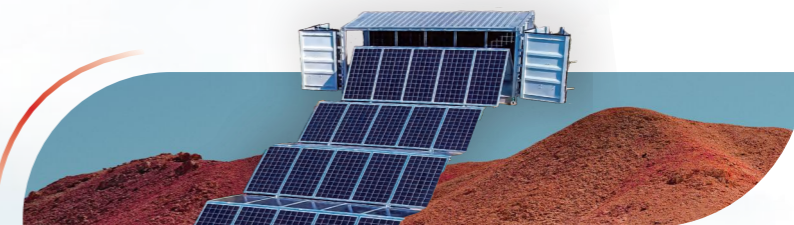


绿色能源 / 智慧建筑 / 智慧农业 系统集成商

GREEN ENERGY / SMART BUILDING / INNOVATIVE AGRICULTURAL SYSTEM INTEGRATOR



SENTA ENERGY

无锡申泰新能源科技有限公司

SENTA ENERGY CO., LTD

网址 / Web: www.sentaenergy.com

电话 / Tel: +86-510-8359 2969

邮箱 / Email: sales@sentaenergy.com

地址 / Add: RM.501,Bld.1,No.33 Zhihui Road,Huishan District,

Wuxi,Jiangsu,China Zip: 214174

江苏省无锡市惠山区智慧路33号华清创意园

1栋501室, 214174



POWER FUTURE

赋能未来 绿色生活

POWER LIFE

CONTENTS

目 录

公司简介 Company Profile

企业介绍	About Senta	1
发展历程	Development History	3
业务范围	Business Scope	5
品牌体系	Brand Series	5
生产环境	Production Environment	6
产学研试	Industry-university-research	6
企业资质	Enterprise Qualification	7
合作品牌	Cooperative Brand	8

主营产品 Major Products

六大方舱	Solar Containers	11
应用产品	Solar Application Kits	21
光伏部件	Solar PV Components	25

主营项目 Major Projects

光储项目	Solar & ESS	33
智慧种植	Smart Planting	34
装配建筑	Assembly Building	35
项目案例	Project Case	36

企业发展 Development

发展战略	Development Strategy	41
未来愿景	Future Vision	43

SENTA



企业介绍

ABOUT SENTA

SENTA ENERGY 申泰新能

智慧能源 / 绿色建筑 / 新型农业 系统集成商

GREEN ENERGY / SMART BUILDING / INNOVATIVE AGRICULTURAL SYSTEM INTEGRATOR

企业战略 STRATEGY

三新战略
—— 新能源+新建筑+新农业!

企业定位 POSITIONING

做新能源创新者，做新建筑革新者，
做新农业拓新者!

企业使命 MISSION

倾力打造“生态家园，智慧之家”!

企业愿景 VISION

做生态系统产业，让申泰陪伴一生!



无锡申泰新能源科技有限公司成立于2016年，坐落于光伏产业基地江苏无锡市，是一家以新能源光伏发电及储能业务为基础，以新建筑装配式房屋、新农业分布式种植业务为战略储备，集自主研发、生产、销售及服务为一体的高新技术企业，致力于向全球用户提供全生命周期绿色能源、智能建筑、智慧种植的整体解决方案。

公司目前已申请60余件国家商标及版权，1件国际商标，2件PCT国际专利，40余件专利，7件国家发明专利及8件软著；拥有TUV、CE、ISO等国际认证证书；已获得“新四板企业、国家高新技术企业、创新型中小企业、雏鹰三类企业、三星上云企业、科技型中小企业、江苏省民营科技企业”等。

Senta Energy Co., Ltd. was founded in 2016, located in Wuxi, Jiangsu province, the birthplace of the PV industry in China. We focus on solar power system and energy storage business, with new building and new agricultural distributed planting business as the strategic reserve. Set independent research and development, production, sales and service as one of the high-tech enterprises, is committed to providing global users with the whole life cycle intelligent energy, intelligent building, intelligent planting overall solutions.

Senta has TUV/CE/ISO and other international certification and management system certification, Applied for more than 60 invention patents and soft publications, more than 40 trademarks and Copyrights. and Senta was Awarded "National HIGH-TECH Enterprise", " Jiangsu Private Science and Technology Enterprise ", " Small and medium-sized science and technology Enterprise ", " Fledgling Enterprise "and other qualifications.



申泰新能拥有标准化的生产车间，自动化，半自动化生产基地。申泰目前具备工商业储能电站、户用储能，光储电站的系统集成和智能运维能力，可为用户提供完整的储能电站整体解决方案和一站式能源管理服务。同时还拥有多条产线，包括集装箱产线、锂电池产线、逆变器产线、组件产线等。形成了完整的产品线，确保了生产的高效和品质的稳定。

Senta has standardized production workshop, automated, semi-automated production base. At the same time, it also has a number of production lines, including container production line, lithium battery production line, inverter production line, component production line. Formed a complete product line, to ensure the efficient production and quality stability.

发展历程

DEVELOPMENT HISTORY

2018

2018年8月
成立申化能源
Senwa Energy

2020

2020年8月
成立申特能源
Sente Energy

2022

2022年6月
成立三桥设计分公司
Senqo Design
2022年8月
收购陕西嘉太恒业公司
Jata Construction

2024

展望未来
Future

2016

2016年6月
成立申泰新能源
Senta Energy

2019

2019年1月
成立塞浦路斯公司
3S Energy
Cyprus Branch

2021

2021年12月
成立申度储能
Sendo ESS

2023

2023年1月
申耕智农，落地发展
2023年启东工厂生产基地
成立申泰新能（启东）公司
Envision Sengo Farming
Qidong Branch

凝心聚力 · 破浪前行

业务范围

BUSINESS SCOPE

集团公司：申泰新能
Group Company: Senta

折叠光伏发电舱、发电储能舱、光储充换电舱、种植舱、居住舱、光伏蓄冷冷链舱
Solar Power Container、Solar ESS Container、Solar EB Container、Solar Planting Container、Solar Living Container、Solar Cooling Container

项目公司：申特能源
Project Company: Sente

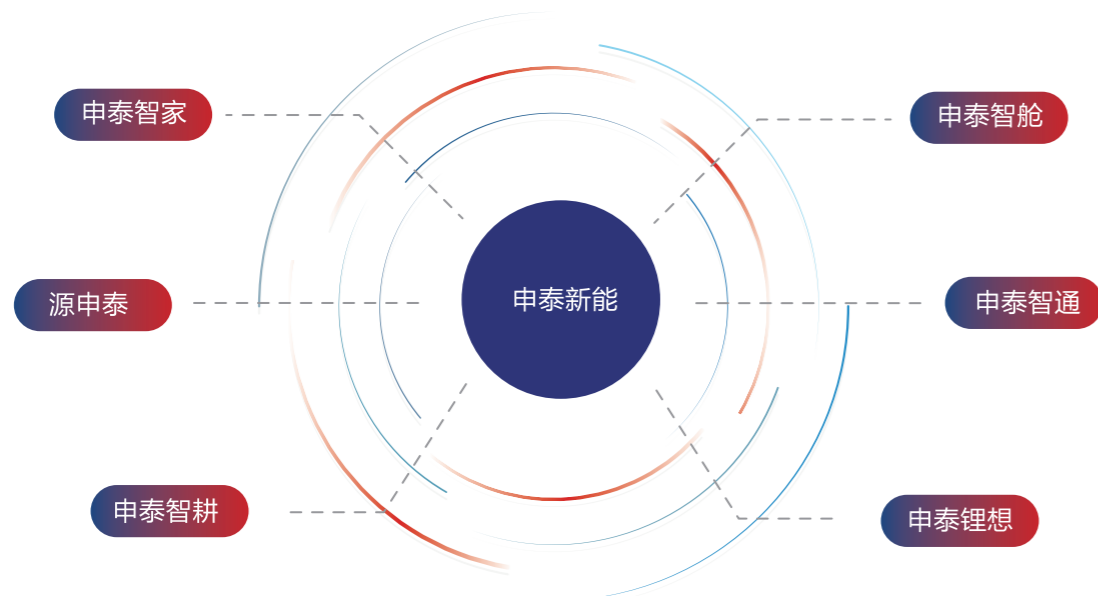
分布式+储能+离网 EPC/施工/运维，项目投融资等
Distributed + energy storage + off-grid EPC/ construction/operation and maintenance, project investment and financing, etc

储能公司：申度储能
Storage Company: Sento

逆变器、储能电池、移动储能柜等锂电产品系列
Inverter, Battery, Movable BESS and other lithium battery product

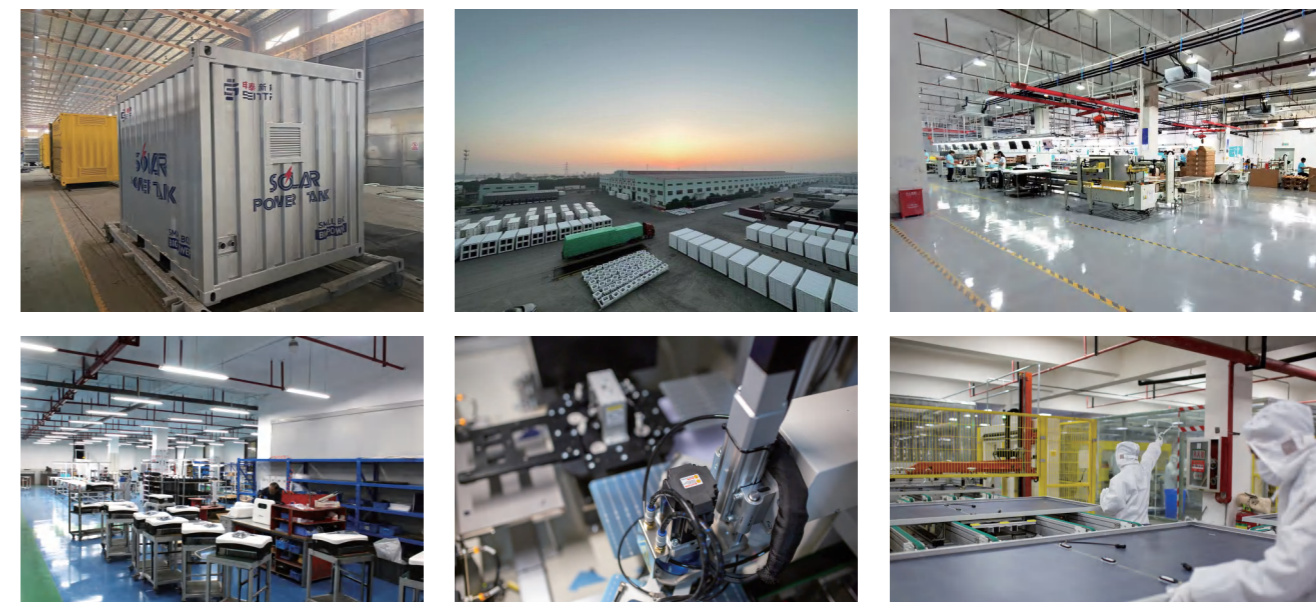
品牌体系

BRAND SERIES



生产环境

PRODUCTION ENVIRONMENT



产学研试

INDUSTRY-UNIVERSITY-RESEARCH

江苏省农业科学院
合作内容：农业种植设施设备以及环境调控技术；
Jiangsu Academy of Agricultural Sciences
Facilities and equipments of agriculture and environmental regulation technology

江南大学物联网学院
合作内容：物联网技术及管理控制软件；
IOT Engineering of Jiangnan University
IOT technology and management control software

扬州大学农学院
合作内容：植株生长环境调控及菌菇种植；
College of Agriculture, Yangzhou University
Plant growth environment control and mushroom cultivation



企业资质

ENTERPRISE QUALIFICATION



合作品牌

COOPERATIVE BRAND



* 部分资质展示 Partial qualification display

知识产权

Intellectual Property

专利40余件，发明7件，国际PCT1件
集成电路1件
软著8件
商标版权60余件，国际商标1件

-More than 40 Patents, among which 7inventions
-1 integrated circuit
-8 Software copyright
-More than 60 Trademarks, among which 1 international trademark

企业资质

Enterprise Qualification

新四板企业
国家高新技术企业
创新型中小企业、雏鹰三类企业
三星上云企业、科技型中小企业
江苏省民营科技企业

-National high-tech enterprise
-Provincial-level specialized special new enterprises
-Jiangsu Province Private technology enterprise
-Small and medium-sized high-tech company
-Fledgling Enterprise

产品认证

Product Certifications

CE/TUV产品认证
质量管理体系认证ISO9001
知识产权贯标体系认证

-TUV
-CE
-ISO9001
-Intellectual property standards system certification

聚力共生 合作共赢



主营产品

MAJOR PRODUCTS



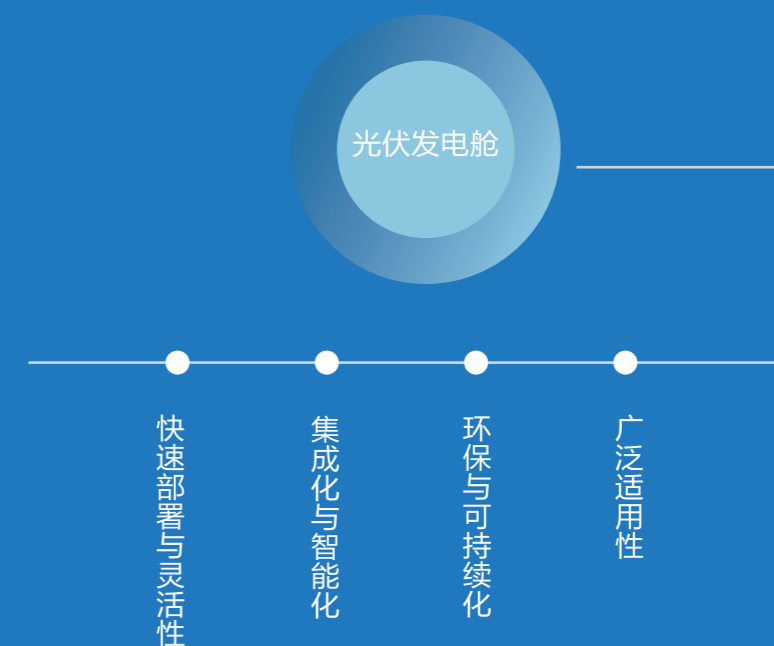
该系列产品可摆脱传统能源供应方式的局限性，为更多偏远、离岛地区提供一种更为环保经济、灵活的解决方案，推动可再生能源的广泛应用和发展。

This series of products can get rid of the limitations of traditional energy supply methods, provide a more environmentally friendly, economic and flexible solution for more remote and outlying island areas, and promote the wide application and development of renewable energy.



- 折叠光伏发电舱
Solar PV Container
- 折叠发电储能舱
Solar ESS Container
- 光储充换电车舱
Solar EB Container
- 装配建筑居住舱
Solar Living Container
- 智慧分布种植舱
Solar Planting Container
- 光伏蓄冷冷链舱
Solar Cooling Container

产品特点



01 六大方舱

SOLAR CONTAINERS

折叠光伏发电舱

Solar PV Container

折叠发电储能舱

Solar ESS Container

光储充换电车舱

Solar EB Container

智慧分布种植舱

Solar Planting Container

光伏蓄冷冷链舱

Solar Cooling Container

装配建筑居住舱

Solar Living Container



折叠式光伏发电舱 / Solar PV Container

Overall Configurations / 整体配置



Package	Package Products Model	SC08GP-M-20K
	Solar Array Capacity (Pmax / kWp)	21.6
	Total Weight (Tons)	5.9
	Unfolded Footprint (L*W*H/m)	63*2.2*0.5
	Folded Footprint (L*W*H/m)	2.2*1.7*1.7
	Max. Slope Limit	1%
	Orientation	Any azimuth
	Complete unfolding Time (mins)	60
	Complete folding Time (mins)	50
Installation Persons	4	



Package	Package Products Model	SC10GP-M-40K
	Solar Array Capacity (Pmax / kWp)	40.32
	Total Weight (Tons)	7.1
	Unfolded Footprint (L*W*H/m)	91*2.4*0.8
	Folded Footprint (L*W*H/m)	2.4*2.1*2.0
	Max. Slope Limit	1%
	Orientation	Any azimuth
	Complete unfolding Time (mins)	80
	Complete folding Time (mins)	60
Installation Persons	4	



Package	Package Products Model	SC20GP-M-80K
	Solar Array Capacity (Pmax / kWp)	80.6
	Total Weight (Tons)	11
	Unfolded Footprint (L*W*H/m)	91*4.8*0.8
	Folded Footprint (L*W*H/m)	4.8*2.0*2.1
	Max. Slope Limit	1%
	Orientation	Any azimuth
	Complete unfolding Time (mins)	120
	Complete folding Time (mins)	60
Installation Persons	4	



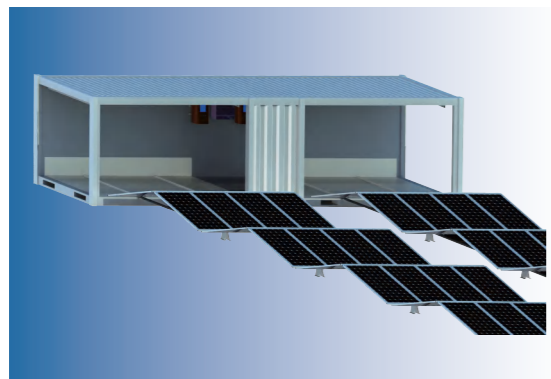
Package	Package Products Model	SC20HQ-M-100K
	Solar Array Capacity (Pmax / kWp)	102.4
	Total Weight (Tons)	13.5
	Unfolded Footprint (L*W*H/m)	102*5.4*0.9
	Folded Footprint (L*W*H/m)	5.4*2.4*2.2
	Max. Slope Limit	1%
	Orientation	Any azimuth
	Complete unfolding Time (mins)	120
	Complete folding Time (mins)	80
Installation Persons	6	

折叠式光伏发电舱 / Solar PV Container

Overall Configurations / 整体配置

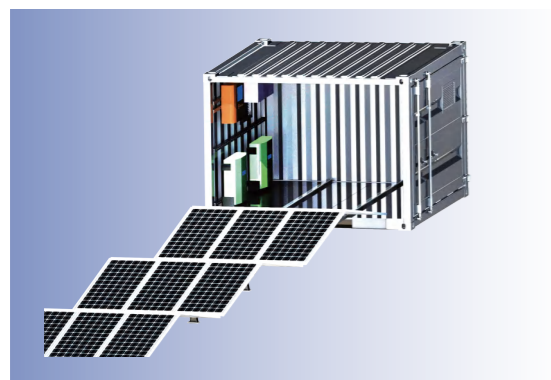


Package	Package Products Model	SC40GP-M-160K
	Solar Array Capacity (Pmax / kWp)	161.3
	Total Weight (Tons)	21.5
	Unfolded Footprint (L*W*H/m)	91*9.5*0.8
	Folded Footprint (L*W*H/m)	9.5*2.0*2.1
	Max. Slope Limit	1%
	Orientation	Any azimuth
	Complete unfolding Time (mins)	160
	Complete folding Time (mins)	100
	Installation Persons	8



Package	Package Products Model	SC40HQ-M-200K
	Solar Array Capacity (Pmax / kWp)	204.9
	Total Weight (Tons)	26.5
	Unfolded Footprint (L*W*H/m)	102*10.8*0.9
	Folded Footprint (L*W*H/m)	10.8*2.4*2.2
	Max. Slope Limit	1%
	Orientation	Any azimuth
	Complete unfolding Time (mins)	200
	Complete folding Time (mins)	120
	Installation Persons	8

折叠式发电储能舱 / Solar ESS Container



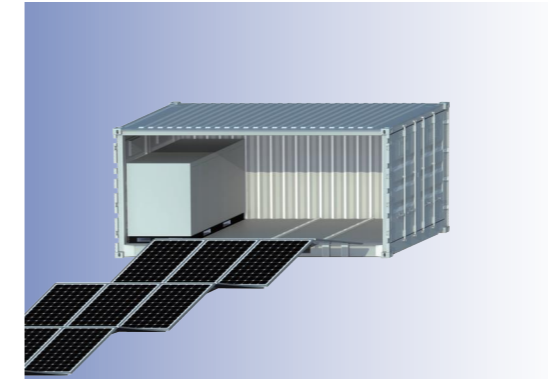
Package	Package Products Model	SC08GP-M-18K20
	Solar Array Capacity (Pmax / kWp)	18
	Total Weight (Tons)	5.5
	Unfolded Footprint (L*W*H/m)	53*2.2*0.5
	Folded Footprint (L*W*H/m)	2.2*1.4*1.7
	Max. Slope Limit	1%
	Orientation	Any azimuth
	Complete unfolding Time (mins)	50
	Complete folding Time (mins)	30
	Installation Persons	4



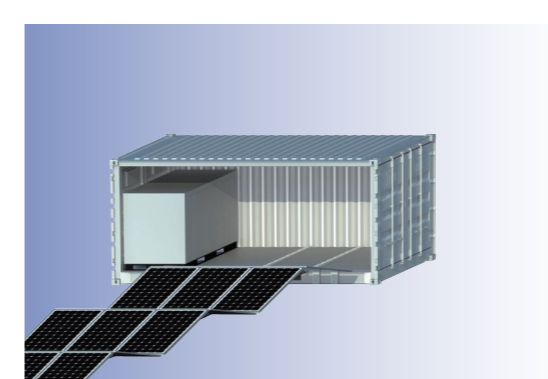
Package	Package Products Model	SC10GP-M-30K40
	Solar Array Capacity (Pmax / kWp)	30.7
	Total Weight (Tons)	6.5
	Unfolded Footprint (L*W*H/m)	69*2.4*0.8
	Folded Footprint (L*W*H/m)	2.4*1.5*2.1
	Max. Slope Limit	1%
	Orientation	Any azimuth
	Complete unfolding Time (mins)	60
	Complete folding Time (mins)	50
	Installation Persons	4

折叠式发电储能舱 / Solar ESS Container

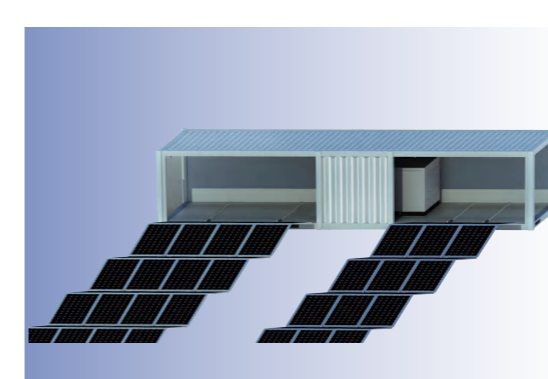
Overall Configurations / 整体配置



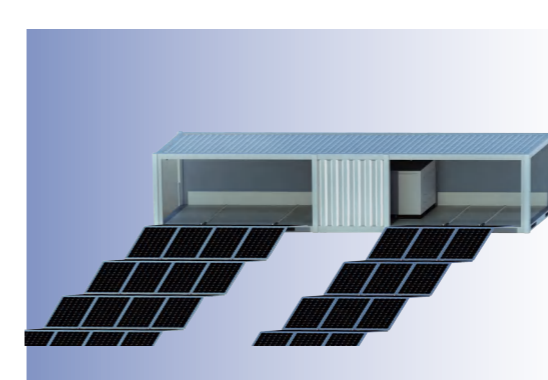
Package	Package Products Model	SC20GP-M-60K215
	Solar Array Capacity (Pmax / kWp)	60.5
	Total Weight (Tons)	13.6
	Unfolded Footprint (L*W*H/m)	91*3.6*0.8
	Folded Footprint (L*W*H/m)	3.6*2.0*2.1
	Max. Slope Limit	1%
	Orientation	Any azimuth
	Complete unfolding Time (mins)	80
	Complete folding Time (mins)	60
	Installation Persons	4



Package	Package Products Model	SC20HQ-M-75K215
	Solar Array Capacity (Pmax / kWp)	76.8
	Total Weight (Tons)	15.2
	Unfolded Footprint (L*W*H/m)	102*4.1*0.9
	Folded Footprint (L*W*H/m)	4.1*2.2*2.4
	Max. Slope Limit	1%
	Orientation	Any azimuth
	Complete unfolding Time (mins)	100
	Complete folding Time (mins)	80
	Installation Persons	4



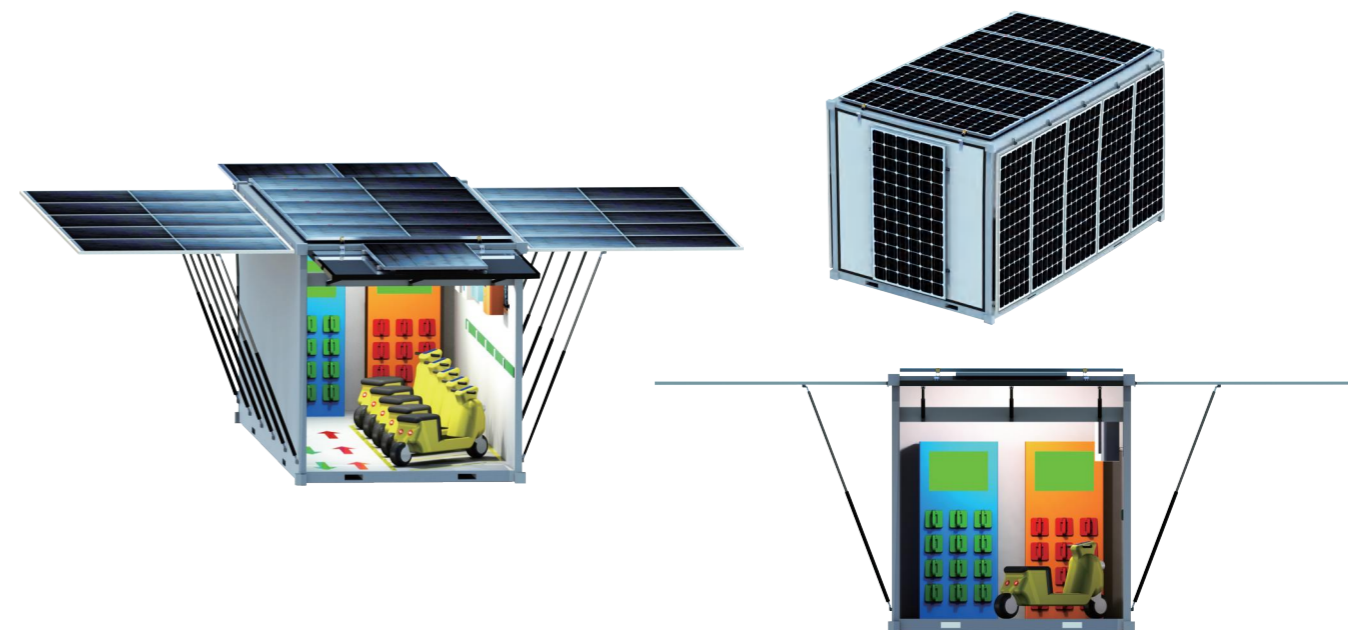
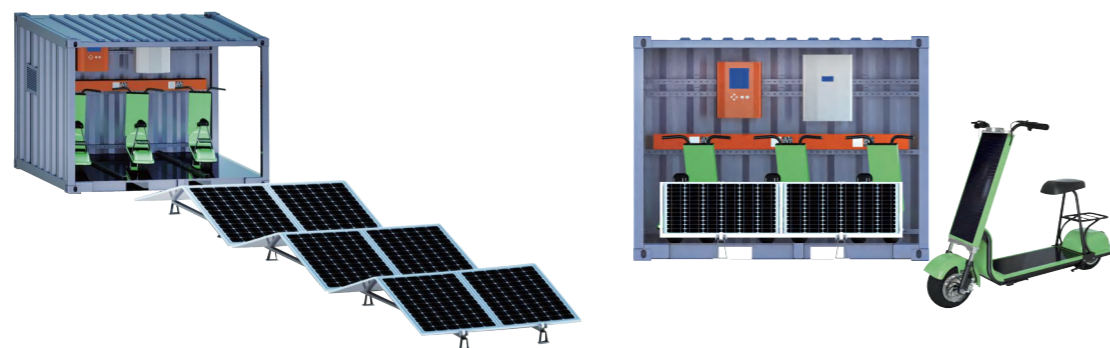
Package	Package Products Model	SC40GP-M-140K215
	Solar Array Capacity (Pmax / kWp)	141.1
	Total Weight (Tons)	24.1
	Unfolded Footprint (L*W*H/m)	91*8.3*0.8
	Folded Footprint (L*W*H/m)	8.3*2.0*2.1
	Max. Slope Limit	1%
	Orientation	Any azimuth
	Complete unfolding Time (mins)	160
	Complete folding Time (mins)	90
	Installation Persons	8



Package	Package Products Model	SC40HQ-M-150K430
	Solar Array Capacity (Pmax / kWp)	153.7
	Total Weight (Tons)	32.4
	Unfolded Footprint (L*W*H/m)	102*8.2*0.9
	Folded Footprint (L*W*H/m)	8.2*2.2*2.4
	Max. Slope Limit	1%
	Orientation	Any azimuth
	Complete unfolding Time (mins)	180
	Complete folding Time (mins)	100
	Installation Persons	8

光储充换电舱

Solar EB Container



SC Package	Package Products Model	SC10GP-M-5K5-EB
	Solar Array Capacity (Pmax / Kwp)	5.76
	Total Weight (Tons)	4
	Operating Temperature (°C)	-40 ~ +85
Container	Type Of Contianer	10GP
	External Dimensions (L*w*h/mm)	2991*2438*2591
	Container Weight (Tons)	1.7
Solar	Solar Panel Type	TopCon Monocrystalline
	Solar Panel Power (Pmax / Wp)	480
	Quantity Of Solar Panels (Pcs)	12
Inverter	Inverter Type	Hybrid Inverter
	String Inverter Capacity (Pmax / Kwp)	5kw
	Operating Phase	single
	Quantity Of String Inverters (Sets)	1
Battery	Module Type	LFP 5kWh/ LV
	Battery Type	LFP
	Rated Capacity	100Ah
	Rated Power	5.12kWh
E-BIKE	Mileage	35-40km
	Item	AGAO SOLAR SCOOTER
	Rated Motor Power	350W(customizable)
	Nominal Energy	468WH
	Battery	Lithium battery
	Maximum Speed	25km/h

光伏充电+储能

PV CHARGING + ENERGY STORAGE

模块齐全，绿色能源
Complete modules, Green energy.

光伏电动车

SOLAR ELECTRIC VEHICLES

自带光伏的电动车，续航里程长，有光即充电
Electric vehicles with PV, long range, light charge.

离岛使用

OUTLYING ISLAND USE

自发自用，无需市电接入可离岛使用
Self-use, no need for mains access can be used off the island.

SC Package	Package Products Model	SC20GP-M-10K30-EB
	Solar Array Capacity (Pmax / Kwp)	9.9
	Total Weight (Tons)	5
Container	Operating Temperature (°C)	-40 ~ +85
	Type Of Contianer	20GP
	External Dimensions (L*w*h/mm)	6058*2438*2591
	Container Weight (Tons)	2.5
Solar	Solar Panel Type	Monocrystalline
	Solar Panel Power (Pmax / Wp)	550
	Quantity Of Solar Panels (Pcs)	18
Inverter	Inverter Type	Hybrid Inverter
	String Inverter Capacity (Pmax / Kwp)	10kw
	Operating Phase	single
Battery	Quantity Of String Inverters (Sets)	1
	Module Type	LFP 10kWh/ LV
	Battery Type	LFP
	Rated Capacity	200Ah
Power Exchange Cabinet	Rated Power	10.24kWh
	Quantity Of Batterys (Sets)	3
	Model	SCPEC-10P
E-BIKE	Maximum Power	10kW
	Charging Current	0-10A
	Model	N100 MAX Collector's Edition
	Battery Capacity	48V25Ah
	Battery Type	Lithium Battery
	Bms	Yes
	Endurance	Approximately 100km
Size	1623*698*1052mm	
Unlocking Method	NFC/Bluetooth/Vocal print	
Instrument	5-inch TFT intelligent touch screen	

换电柜

CHANGING CABINET

换电柜便捷更换电池
The power changer can easily replace the battery.

折叠光伏

FOLDING SOLAR PV

折叠光伏，便于移动，快速部署
Folding PV for easy movement and quick deployment.

便捷运输

CONVENIENT TRANSPORTATION

所有的模块均可以装进集装箱发货
All modules can be shipped in a container.

智慧分布种植舱

Solar Planting Container



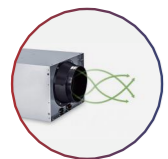
- 生长周期短**
Short Growth Cycle
- 无虫害**
Pest-free
- 无农药无残留**
No Pesticide Residues
- 占地面积小**
Small Footprint
- 光伏发电**
Solar Power System
- 运输成本低**
Low Transport Costs



01 种植盘 —— 植物生长平台

Planting Tray - Plant Growth Platform

采用食品级PP材料制作，盖板开孔用于放置定植篮。
Made of food-grade PP material, with holes in the cover for placing planting baskets.



02 新风系统 —— 植物的呼吸器

Fresh Air System - The Respirator Of Plants

室内外空气交换，新风输送，保证植物呼吸。
Exchanging in-external air, Ensure plant respiration.



03 营养液供给系统 —— 植物的口粮

Nutrient Solution Supply System - Plant Rations

自动化控制营养液循环，保证植物生长所需的营养。
Automatic control of nutrient solution circulation to ensure the nutrients needed for plant growth.



04 LED全光谱生长灯 —— 模拟太阳光

Led Full Spectrum Grow Light - Simulates Sunlight

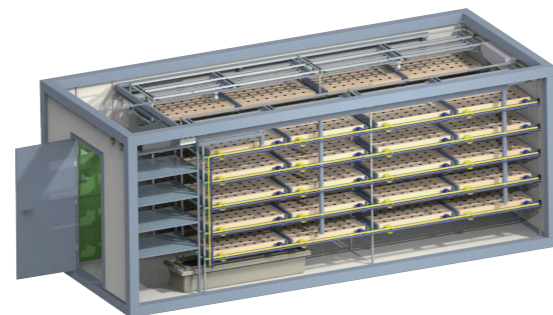
通过全光谱LED植物补光灯模拟阳光，促进植物生长。
Mimicking the sun makes plants grow better.



05 热交换恒温系统 —— 舱内精准控温

Constant Temperature System - Temperature Control

舱内温度精准调控，保证植物生长在合适温度区间内。
Automatically adjust the indoor temperature precisely, so that plants can grow better.



硬件设施

Hardware Equipment

+

智能物联网管理控制系统

Intelligent IOT Management Control System

+

运营平台

Operation Platform

蔬菜生长流程

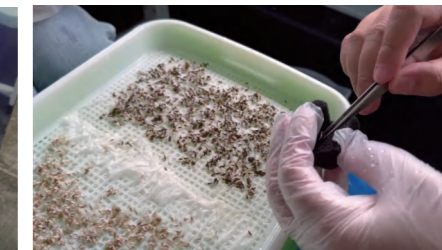
Vegetable Growing Process



① 选种浸种
Seeds Selection



② 催芽
Germination



③ 育苗
Seeding



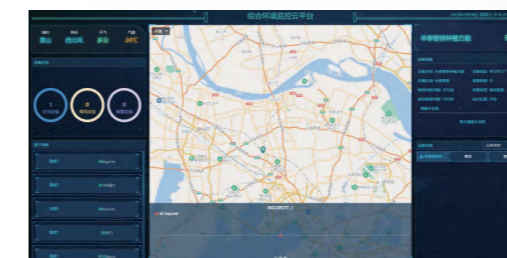
④ 定植
Planting



⑤ 生长期
Cultivation



⑥ 采收清洗
Harvest



环境监测控制平台

Intelligent Monitoring And Control Platform

应用场景

Application Scenarios



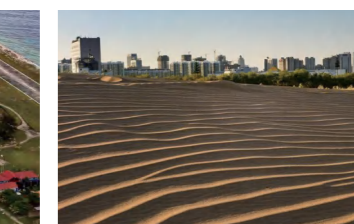
偏远项目现场和工地
Remote project site



一带一路基建
Belt and Road Infrastructure



岛屿滩涂
Island



城市+沙漠化场景
City + Desertified area

光伏蓄冷冷链舱

Solar Cooling Container

传统冷库问题

Traditional Cold Storage

传统的冷库耗能高，用电负荷高，耗电量大。太阳能光伏发电系统的初始投资费用相对较高，其中储能设备蓄电池占据了很大的比例。

Traditional cold storage has high energy consumption, high power load and large power consumption. The initial investment cost of solar PV power generation system is relatively high, of which energy storage batteries account for a large proportion.

江苏省农产品冷链装备创新中心针对这一难题，联合无锡申泰新能源科技有限公司组建了“光伏+蓄冷+冷库”的专家团队，集中力量开展重点技术攻关，推出了绿色节能、库温恒定的光伏蓄冷冷库建造技术方案，该技术方案以蓄冷板替代蓄电池，将光伏电能直接以冷能的形式储存起来。

Senta Energy has set up an expert team of "solar power + cold storage", and developed a green energy-saving PV cold storage technology solution with constant storage temperature. The technical solution replaces batteries with cold storage plates and stores PV energy directly in the form of cold energy.



- 减少能耗
Energy-saving
- 降低成本
Low Cost
- 无虑电池污染
No Pollution
- 蓄冷时间长
Keep Cold

装配建筑居住舱

Solar Living Container

离岛方舱1.0-“泰舱”

Offshore Cabin1.0

离岛方舱：即离岛式快速组装房屋，不需要外界资源输入，能够独立自主提供各项能源需求，包括：电能、光能、热能、智能、水源等，实现真正意义上的“正能量建筑”。

项目定位：解决偏远场景的住宿痛点，融入智慧城市建设项目，实现物联网功能，强化“泰舱”的离岛化、集成化、智能化等特性。

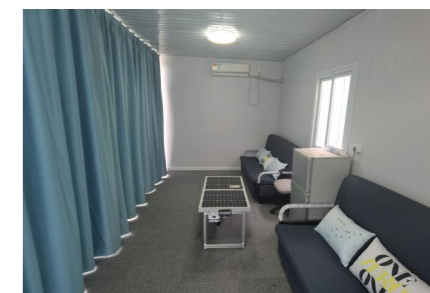
The offshore rapid assembly house; The so-called "offshore" means it does not need the input of external resources and can independently provide various energy needs, including electric energy, light energy, heat energy, intelligence, water, etc., so as to realize "positive energy building" in a real sense.



应用场景：

办公居住、户外场所、示范场景、救援援助、养殖种植、灾区重建

Office living, outdoor places, demonstration scenes, rescue assistance, breeding and planting, reconstruction of disaster areas.



- 光伏发电
Solar PV Power
- PVT热能
PVT Heat
- 锂电储能
Lithium Battery
- 光电照明
Lighting System

02 应用产品

SOLAR APPLICATION KITS

光伏折叠桌-对折式

Foldable Solar Table-F

光伏折叠桌-侧折式

Foldable Solar Table-A

光伏折叠组L型-焊接式

Foldable Solar Array-L-FIX

光伏折叠组L型-快拼式

Foldable Solar Array-L-FAB



光伏折叠桌-对折式

Foldable Solar Table-F



Electrical Performance (STC: AM 1.5, 1000W/m², 25°C)

Module Type	ST-F-420AC
Maximum Power (Pmax / W)	420 (210*2)
Power Tolerance	± 3%
Maximum Power Voltage (Vm / V)	50.8
Maximum Power Current (Im / A)	8.37
Open Circuit Voltage (Voc / V)	59
Short Circuit Current (Isc / A)	8.83
Module Efficiency (%)	22.1
MicroInverter	Maysun400
MPPT Voltage Range(V)	28-55
Startup Voltage(V)	20
Single-Phase Grid Type	120V/230V

[更多参数>>More parameters](#)

Electrical Performance (STC: AM 1.5, 1000W/m², 25°C)

Module Type	ST-F-100DC
Maximum Power (Pmax / W)	100 (50*2)
Power Tolerance	± 3%
Maximum Power Voltage (Vm / V)	12.0
Maximum Power Current (Im / A)	4.17
Open Circuit Voltage (Voc / V)	14.1
Short Circuit Current (Isc / A)	4.44
Module Efficiency (%)	22.4
PWM Controller	HC2410
System Voltage(V)	12/24
Rated Current(A)	10
Maximum input voltage of PV(V)	50V (stop charging, < 45V recovery)

[更多参数>>More parameters](#)

Electrical Performance (STC: AM 1.5, 1000W/m², 25°C)

Module Type	ST-F-150DC
Maximum Power (Pmax / W)	150 (75*2)
Power Tolerance	± 3%
Maximum Power Voltage (Vm / V)	12.0
Maximum Power Current (Im / A)	6.26
Open Circuit Voltage (Voc / V)	14.0
Short Circuit Current (Isc / A)	6.60
Module Efficiency (%)	22.4
MicroInverter	HC2420
MPPT Voltage Range(V)	12/24
Startup Voltage(V)	20
Single-Phase Grid Type	50V (stop charging, < 45V recovery)

[更多参数>>More parameters](#)

Electrical Performance (STC: AM 1.5, 1000W/m², 25°C)

Module Type	ST-F-250DC
Maximum Power (Pmax / W)	250 (125*2)
Power Tolerance	± 3%
Maximum Power Voltage (Vm / V)	15.0
Maximum Power Current (Im / A)	8.38
Open Circuit Voltage (Voc / V)	17.6
Short Circuit Current (Isc / A)	8.92
Module Efficiency (%)	22.6
MicroInverter	Maysun300
Rated Output Power(Wp)	295
Maximum Input Voltage(V)	60
Maximum Input Current(A)	10

[更多参数>>More parameters](#)

光伏折叠桌-侧折式 Foldable Solar Table-A



Electrical Performance (STC: AM 1.5, 1000W/m², 25°C)

Module Type	ST-A-410AC	MicroInverter	Maysun300
Maximum Power (Pmax / W)	410	Rated Output Power(Wp)	295
Power Tolerance	± 3%	Maximum Input Voltage(V)	60
Maximum Power Voltage (Vm / V)	31.45	Maximum Input Current(A)	10
Maximum Power Current (Im / A)	13.04	MPPT Voltage Range(V)	28-55
Open Circuit Voltage (Voc / V)	37.32	Startup Voltage(V)	20
Short Circuit Current (Isc / A)	13.95	Single-Phase Grid Type	120V/230V
Module Efficiency (%)	21.0	Nominal output Frequency	50/60Hz

Temperature Properties

Normal Operating Cell Temperature	45±2 °C	Maximum System Voltage (VDC)	1500
Temperature Coefficient of Pm	-0.35 %/°C	Maximum Series Fuse Rating (A)	25
Temperature Coefficient of Voc	-0.275%/°C	Operating Module Temperature (°C)	-40 to +85
Temperature Coefficient of Isc	+0.045 %/°C		

Mechanical Properties

Panel Dimensions (L×W×H / mm)	1722x1134x30
Table Dimensions (L×W×H / mm)	1722x1134x30(/1300)
Packing Dimensions (L×W×H / mm)	1900×1400×100
Weight (Kg)	35
Container 20GP (pcs)	84
Container 40HC (pcs)	192

Operation Conditions

Maximum System Voltage (VDC)	1500
Maximum Series Fuse Rating (A)	25
Operating Module Temperature (°C)	-40 to +85

Accessories

1. Smart solar microinverter with WIFI functions
2. 5m extension cable with MicroInverter Output, connectors sets, Crocodile clips cable set; DC connector cable set;
3. Other sets: Aluminum foldable stool, waterproof tablecloth and bag, user manual

光伏折叠组L型 Foldable Solar Array-L



焊接式 Foldable Solar Array-L-FIX

Module Type	ST-L-2.4K-FIX
Maximum Power (Pmax / W)	2400(600×4)
Power Tolerance	± 3%
Maximum Power Voltage (Vm / V)	34.9
Maximum Power Current (Im / A)	17.2
Open Circuit Voltage (Voc / V)	41.3
Short Circuit Current (Isc / A)	18.47
Module Efficiency (%)	21.2

Accessories

1. 3 hydraulic rods and 3 limit rods
2. 2 bushings and 4 limit pins
3. Several bolt groups

[更多参数>>More parameters](#)

快拼式 Foldable Solar Array-L-FAB

Module Type	ST-L-2.4K-FAB
Maximum Power (Pmax / W)	2400(600×4)
Power Tolerance	± 3%
Maximum Power Voltage (Vm / V)	34.9
Maximum Power Current (Im / A)	17.2
Open Circuit Voltage (Voc / V)	41.3
Short Circuit Current (Isc / A)	18.47
Module Efficiency (%)	21.2

Accessories

1. 3 hydraulic rods and 3 limit rods
2. 2 bushings and 4 limit pins
3. Several bolt groups

[更多参数>>More parameters](#)

03 光伏单品

SOALR PV COMPONENTS

储能电池

Lithium Battery

光伏逆变器

Solar PV Inverter

光伏瓦

Solar Tile



储能电池系列

Lithium Battery Series



壁挂电池 Wall Mounted Battery

Model	LFP 5kWh/LV	LFP 10kWh/LV
Available Energy	4.6kWh	9.2kWh
Nominal Discharge/Charging power	2.5kW	5kW
Peak Power (Discharge Only)	2.9kW for 3 seconds	5.8kW for 3 seconds
Constant Current (Discharge Only)	50A	100A
Voltage Range	48-56Vd.c	
Nominal Voltage	51.2Vd.c	
Max. Charge Voltage	59.2V±0.5Vd.c	
Weight	65kg	116.5kg
Certificates	CE、UN38.3、IEC62619、IEC63056	

[更多参数>>More parameters](#)



堆叠电池 Stack Mounted Battery

Model	LFP 9kWh	LFP 12kWh	LFP 15kWh	LFP 18kWh
Available Energy*	8.64kWh	11.52kWh	14.40kWh	17.28kWh
Battery Module	LFP 3000/HV:57.6V 50Ah			
Number of Modules	3	4	5	6
Nominal Voltage	172.8V	230.4V	288V	345.6V
Operating Voltage Range	135-197.1V	180-262.8V	225-328.5V	270-394.2V
Nominal Discharge/Charging Current	50/25A			
Max.Charge Voltage	197.1V	262.8V	328.5V	394.2V
Weight	102kg	131kg	160kg	189kg
Dimension(mm)	670*330*697	670*330*855	670*330*1013	670*330*1171
Certificates	CE,UN38.3,IEC62619,IEC63056			

[更多参数>>More parameters](#)



一体机电池 AIO Movable Battery

Model	SNE 1000-2.56	SNE 2000-5.12	SNE 3000-10.24
Rated AC Output Power	1.5KW	3KW	5KW
Peak Power (20ms)	4.5KW	9KW	15KW
AC Output Voltage	592*820*260	100-120V/220-240V	642*1129*280
Output Frequency	60kg	50/60Hz	140kg
Output Waveform	Pure Sine Wave		
USB Output	5V 2A		
Max AC Charge Current	40A		
Max PV Input Power	1040W	2080W	3120w
Max PV Input Voltage	150V		
MPPT Charging Current	24V 40A	48V 40A	48V 60A
Battery Type	LiFePO4		
Battery Capacity	2.56KWh	5.12KWh	10.24KWh

[更多参数>>More parameters](#)

光伏逆变器系列

Solar PV Inverter Series

On Grid Series



单相并网 Single Phase

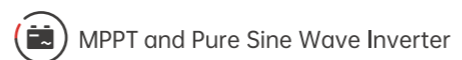
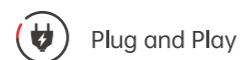
Model	S1000TL	S1500TL	S2200TL	S3000TL	S3600TL
DC Side/Input Parameters					
Max DC power(W)	1500	2250	3300	4500	5400
Max DC voltage (Vdc)	450	450	500	500	500
Min System start/Shut down voltage(Vdc)	65/70	75/100	75/100	75/100	75/100
MPPT voltage range(Vdc)	70~450	100~450	100~450	100~450	100~450
Max.input current(A)	13	13	13	13	13
Number of MPP trackers	1	1	1	1	2
Strings per MPP tracker	1	1	1	1	1

更多参数>>More parameters

三相并网 Three Phase

Model	TP4KTL	TP5KTL	TP6KTL	TP8KTL	TP10KTL	TP15KTL	TP20KTL	TP25KTL
Input (DC)								
Max DC power (W)	6000	7500	9000	12000	15000	22500	30000	30000
Max DC voltage(Vdc)	1000	1000	1000	1000	1000	1000	1000	1000
Min working voltage(Vdc)	250	250	250	250	250	200	200	200
MPPT voltage range(Vdc)	250~850	250~850	250~850	250~850	250~850	200~850	200~850	200~850
Max input current / per string(A)	13/13	13/13	13/13	13/13	13/13	26/20	26/26	36/26
Number of MPP trackers	2	2	2	2	2	2	2	2
Number of input string	1	1	1	1	1	3	4	4

更多参数>>More parameters



Hybrid Series



单相储能 Single Phase

Model	EPL3000TL	EPL4000TL	EPL5000TL	EPL6000TL	EPL8000TL	EPL10000TL
Input(DC)						
Max DC power	4500W	6000W	7500W	9000W	12000W	14000W
Max DC voltage	500 V					
MPPT voltage range	100~450 Vd.c.					
Rated PV Input Voltage	360V (100-500V)					
Full Load DC Voltage Range	200-425V					
PV Input Current	13+13A	13+13A	13+13A	26+26A	26+26A	26+26A
Max.PV Isc	25+25	25+25	25+25	50+50	50+50	50+50
Number of MPPT trackers	2	2	2	2	2	2
Number of input string	1+1	1+1	1+1	2+1	2+1	2+1

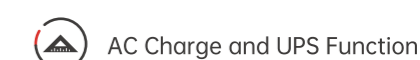
更多参数>>More parameters



三相储能 Three Phase

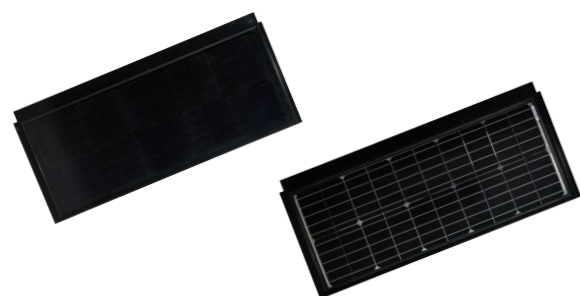
Model	EPH4KTL	EPH5KTL	EPH6KTL	EPH8KTL	EPH10KTL	EPH12KTL
Input(DC)						
Max DC power	6000W	7500W	9000W	12000W	15000W	15000W
Max DC voltage	1000 Vd.c.					
MPPT voltage range	200~850 Vd.c.					
Max input current/per string	13Ax2					
Number of MPP trackers	2					
Number of input string	2					
Battery Input						
Battery Type	Li-ion					
Battery voltage range	180-700V					
Maximum charge/discharge current	25/25A					
Charge strategy for Li-ion Battery	Self-adaptation to BMS					

更多参数>>More parameters



光伏瓦系列

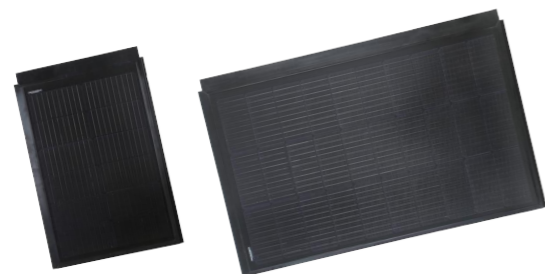
Solar Tile Series



Solar Tile-Sentile V1.0

Module Type	ST055M6-20C	ST110M6-36C
Max. Power (Pmax / Wp)	55	110
Power Tolerance	0 ~ +3%	0 ~ +3%
Max. Power Voltage (Vm / V)	11.2	22.4
Max. Power Current (Im / A)	4.92	4.92
Open Circuit Voltage (Voc / V)	13.4	26.8
Short Circuit Current (Isc / A)	5.18	5.18
Module Efficiency (%)	14.26	16.25
Aarry Efficiency (%)	17.49	18.26

[更多参数>>More parameters](#)



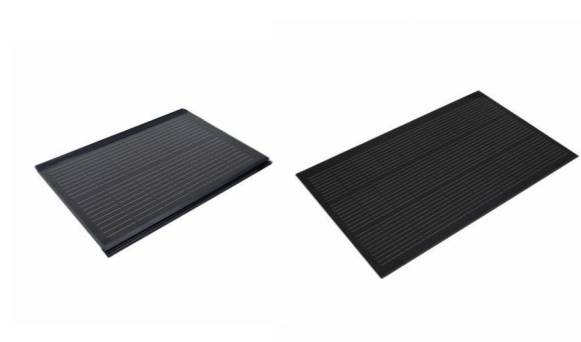
Solar Tile-Sentile V2.0

Module Type	ST045M6-20C	ST075M6-36C	ST110M6-36C
Max. Power (Pmax / Wp)	45	75	110
Power Tolerance	0 ~ +3%	0 ~ +3%	0 ~ +3%
Max. Power Voltage (Vm / V)	7.0	11.7	17.1
Max. Power Current (Im / A)	6.45	6.45	6.45
Open Circuit Voltage (Voc / V)	8.1	13.6	19.8
Short Circuit Current (Isc / A)	6.78	6.78	6.78
Module Efficiency (%)	15.28	15.51	16.38
Aarry Efficiency (%)	17.7	18.63	18.70

[更多参数>>More parameters](#)

相对效率水平，第一年后至少97%，之后年降解最大值为0.6%，10年后至少91.6%，25年后82.6%。

Relative efficiency level, at least 97% after first year, annual degradation max.0.6% afterward, at least 91.6% after 10years, and 82.6% after 25years.



Solar Tile-Sentile V3.0

Module Type	ST045M6-20CD	ST110M6-36CD
Max. Power (Pmax / Wp)	45	110
Power Tolerance	0 ~ +3%	0 ~ +3%
Max. Power Voltage (Vm / V)	7.0	17.1
Max. Power Current (Im / A)	6.45	6.45
Open Circuit Voltage (Voc / V)	8.1	19.8
Short Circuit Current (Isc / A)	6.78	6.78
Module Efficiency (%)	16.28	17.25
Aarry Efficiency (%)	17.7	18.14

[更多参数>>More parameters](#)



Solar Tile-Hantile V1.0

Module Type	ST030M6-36C
Max. Power (Pmax / Wp)	30
Power Tolerance	0 ~ +3%
Max. Power Voltage (Vm / V)	8.6
Max. Power Current (Im / A)	3.52
Open Circuit Voltage (Voc / V)	10.6
Short Circuit Current (Isc / A)	4.09
Module Efficiency (%)	8.36
Aarry Efficiency (%)	10.64

[更多参数>>More parameters](#)



Solar Tile-Hedtile V1.0

Module Type	ST010M6-36C	ST030M6-36C
Max. Power (Pmax / Wp)	10	30
Power Tolerance	0 ~ +3%	0 ~ +3%
Max. Power Voltage (Vm / V)	1.11	3.32
Max. Power Current (Im / A)	9.05	9.05
Open Circuit Voltage (Voc / V)	1.34	3.99
Short Circuit Current (Isc / A)	9.51	9.51
Module Efficiency (%)	6.99	10.69
Aarry Efficiency (%)	9.42	13.15

[更多参数>>More parameters](#)

主营产品

MAJOR PROJECTS



光储项目 Solar & ESS	33
智慧种植 Smart Planting	34
装配建筑 Assembly Building	35
项目案例 Project Case	36

光储项目是指结合光伏发电和储能技术的项目。利用光伏组件将太阳能转化为电能，并通过逆变器将直流电转换为交流电以供使用或并入电网。同时，光储项目还包含储能系统，用于存储多余的电能，以便在需要时释放使用。光储项目具有高效、灵活、可靠、环保、经济以及智能化等特点，对于推动能源结构的优化、环境的改善以及经济社会的可持续发展具有重要意义。



The solar & ESS project has the characteristics of high efficiency, flexibility, reliability, environmental protection, economy and intelligence, which is of great significance to promote the optimization of energy structure, the improvement of environment and the sustainable development of economy and society.

产品特点



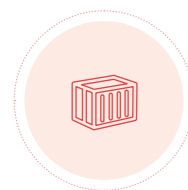
01 光储项目

SOLAR AND ESS



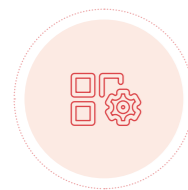
光伏项目 Solar Pv Projects

工商业分布式、户用分布式、离网发电、新特奇趣
Industrial & Commercial Projects, Residential Projects, Off-grid System Projects, New Special Projects



储能项目 Energy Storage System

工商业储能、户用储能、离网储能
Industrial & Commercial Projects, Residential Projects, Off-grid System Projects



电站运维 Operation & Maintenance

清洗系统 Cleaning system

合作模式 Cooperation Mode

分布式EPC
Distributed EPC

第三方投资EMC
Third Party Investment In EMC

融资租赁
Finance Lease

02 智慧种植

SMART PLANTING



物联网无土栽培
集装箱

IOT planting container

光伏+农业

PV + Agriculture

种植流程

PLANTING PROCESS



市场需求

MARKET DEMAND



无土栽培种植集装箱
批量化实施
叠加预制菜产业

Combined with the prepared food

高效、规模化生产
Efficient And Scalable

方便快捷
Convenient And Quick

品质保证
Quality Assurance

可追溯性增强
Traceability

市场需求驱动
Large Market Demand

政策支持
Policy Support

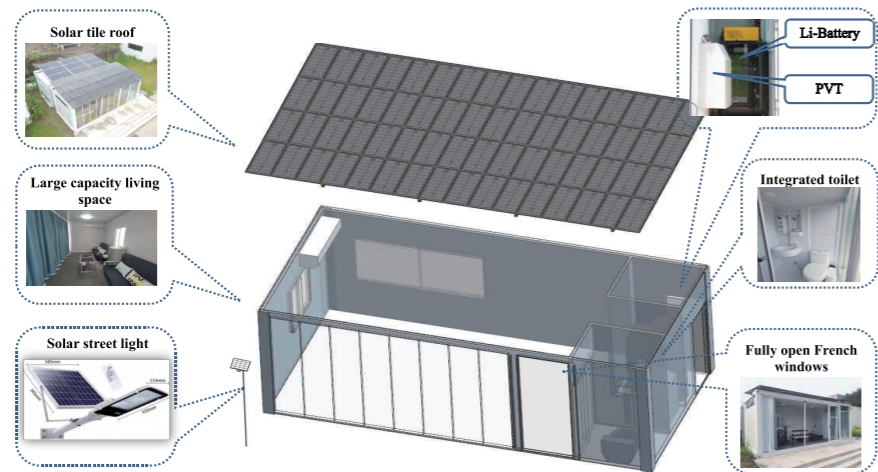
03 装配建筑

ASSEMBLY BUILDING

04 项目案例

PROJECT CASE

Can be customized configurate



发电舱案例

Solar PV Container



① 集装箱运输
Transportation Way



② 吊装就位
Hoisting in Position



③ 开箱铺设
Open & Assembly



① 散件运输
Bulk Transport



② 结构安装
Structural Installation



③ 安装墙板
Install Wallboard



④ 展开光伏阵列
Unfold Solar PV Array



⑤ 电气接线安装
Cable Installation



⑥ 运行工作
Final Operation



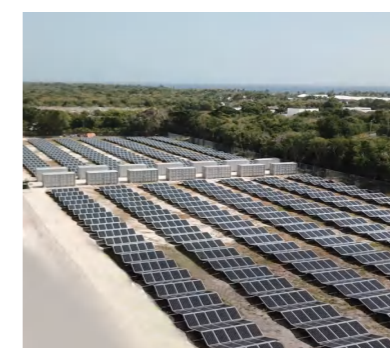
④ 安装一体式卫浴
Install Integrated Bathroom



⑤ 摆放家具
Arrange Furniture



⑥ 施工完成
Final Operation



光储项目案例-工商业分布式

Industrial & Commercial Projects



智慧种植案例

Smart Planting



光储项目案例-户用分布式

Residential Projects



光储项目案例-储能项目

Off-grid Energy Storage



企业发展

DEVELOPMENT



发展战略 41
Development Strategy

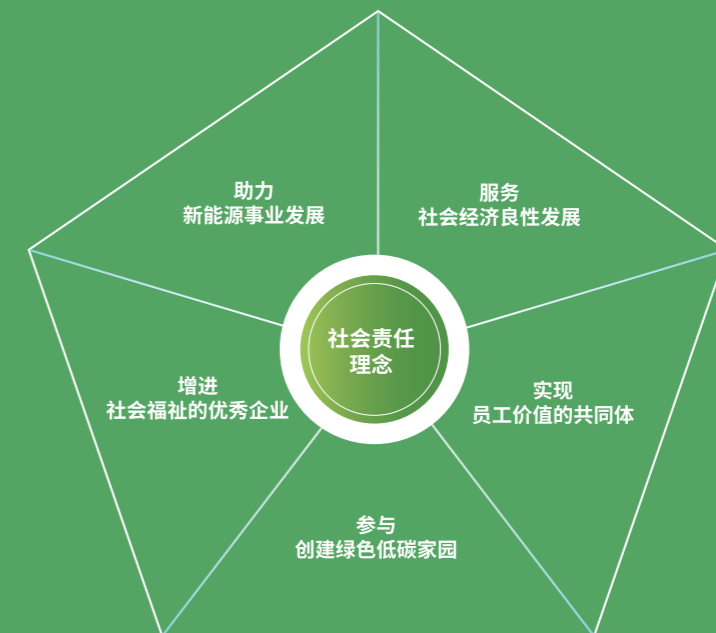
未来愿景 43
Future Vision

我们将坚持创新驱动、市场导向、人才为本的发展理念，不断优化业务布局和拓展，提升企业的核心竞争力和可持续发展能力。同时，我们将积极应对各种风险和挑战，保持战略定力和灵活性，为成为全球领先的新能源解决方案提供商而努力奋斗。



We will adhere to the innovation-driven, market-oriented and talent-based development concept, continuously optimize business layout and expansion, and enhance the core competitiveness and sustainable development ability of the enterprise. At the same time, we will actively respond to various risks and challenges, maintain strategic focus and flexibility, and strive to become the world's leading new energy solutions provider.

企业责任



发展战略

DEVELOPMENT STRATEGY

3年计划

发展方向 “三新” 板块业务

新能源
新建筑
新农业

销售规模 3年内销售突破2亿

研发设计：自主开发产品及项目应用，联合高校、研究院加大产学研试合作；

项目集成：系统集成应用，“三桶油”加油站项目，以智能微网多能供电集成项目，智慧种植预制菜产业园项目为两大产业集群；

海外销售：布局海外市场开拓和推广，以终端需求为导向，实施定制化服务

5年计划

合作共赢 大公司强强联合

新能源方面：国内“三桶油”、中东油企项目合作；

装配式建筑：房地产开发商、连锁酒店公司等；

农业种养殖：一带一路工程、乡村振兴、菜篮子工程等

战略目标 5年内进入资本市场

POWER FUTURE
POWER LIFE

未来愿景 FUTURE VISION

我们有个梦想：
We Have a Dream

“火星移民计划”
Mars Settlement Program



**未来，在建设星际移民基地的过程中
我们的太阳能组件发电集装箱六大舱
系统，能够贡献一份力量！**

In the future, during the construction of interstellar migration bases, Senta will bring Solar PV Container Systems to make an excellent contribution!