

## 彩钢瓦屋顶支架 (整体夹具点装式)



本系统由以下零部件组成/This system consists of the following components:



夹具  
Fixture



边压块、内六角螺栓  
弹垫、滑块螺母  
Edge pressing block, six hexagon  
bolt/Spring washer, nut side



中压块、内六角螺栓  
弹垫、滑块螺母  
Medium pressure block, six hexagon  
bolt/Spring washer, nut side

### 优势/ADVANTAGES:

1. 美观/Good Appearance.
2. 简便易安装/Easy and flexible Installation.
3. 多样化设计/Diversified Application.
4. 重量轻/Light dead-weight.
5. 节省安装材料/The mounting system materials are saved.

### 产品说明/DESCRIPTION:

- 安装位置/Installation place:  
彩钢瓦屋面/Caigang watts roof
- 斜面支架组件/Module slop:  
根据实际需求/According to the practical  
demand
- 拉拔力/Drawing force:  
1000N
- 风力承载能力/Wind load:  
40m/s、32.5kg/m<sup>2</sup>、13级
- 雪载承受力/Snow load:  
70kg/m<sup>2</sup>
- 支架类型/Module type  
框架/Frame
- 材料/Material:  
铝型材/Aluminium profile
- 颜色/Colour:  
本色/Natural
- 使用年限/Warranty time:  
25 years.



### 工程实例照片



## 1 第一步/First step

With the M8\*35 inner six angle bolt clamp is fixed on a Caigang watts, as the chart below:

用M8\*35的内六角螺栓将夹具固定在彩钢瓦上, 如下图:



Figure 1 (a)

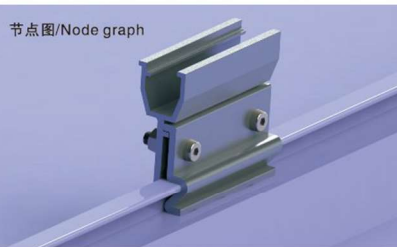


Figure 1 (b)

## 2 第二步/Second step

The component with M8 inner six angle bolt, edge block, block, an elastic cushion and medium pressure slider nut fixed on the fixture. The following diagram:

将组件用M8的内六角螺栓、边压块、中压块、弹垫及滑块螺母固定在夹具上。如下图:



Figure 2 (a)

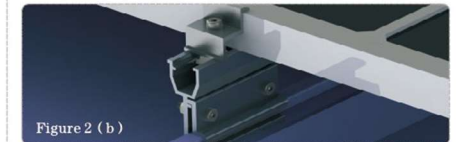


Figure 2 (b)

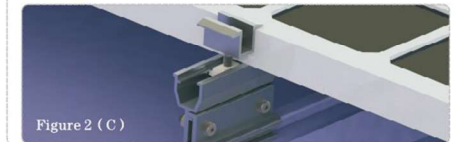
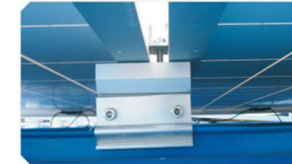


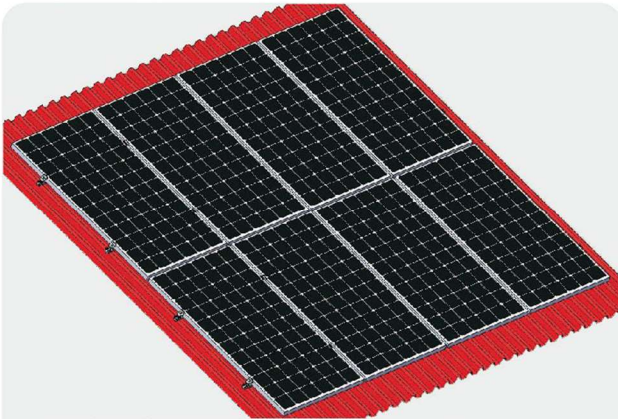
Figure 2 (c)

### 工程实例照片



# MOUNTING BROCHURE

## 彩钢瓦屋顶支架 (U型导轨)



本系统由以下零部件组成/This system consists of the following components:



### 产品说明/DESCRIPTION:

- 安装位置/Installation place:  
彩钢瓦屋面/Caigang watts roof
- 斜面支架组件/Module slop:  
根据实际需求/According to the practical demand
- 拉拔力/Drawing force:  
1000N
- 风力承载能力/Wind load:  
40m/s、32.5kg/m<sup>2</sup>、13级
- 雪载承受力/Snow load:  
70kg/m<sup>2</sup>
- 支架类型/Module type  
框架/Frame
- 材料/Material:  
铝型材/Aluminium profile
- 颜色/Colour:  
本色/Natural
- 使用年限/Warranty time:  
25 years.

### 优势/ADVANTAGES:

1. 美观/Good Appearance.
2. 简便易安装/Easy and flexible Installation.
3. 多样化设计/Diversified Application.
4. 重量轻/Light dead-weight.
5. 节省安装材料/The mounting system materials are saved.



### 工程实例照片



## 1 第一步/First step

With a self tapping screw U guide rail is fixed on the caigang watts, the diagram below:

用自攻螺钉将U型导轨固定在彩钢瓦上, 如下图:

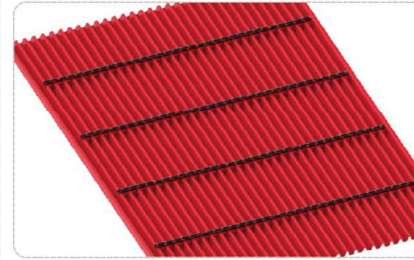


Figure 1 (a)

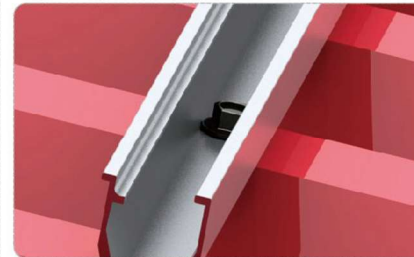


Figure 1 (b)

## 2 第二步/Second step

The component with pressure and inner hexagon bolt on the u-shaped guideway. The diagram below:

将组件用压块及内六角螺栓固定在U型导轨上, 如下图:

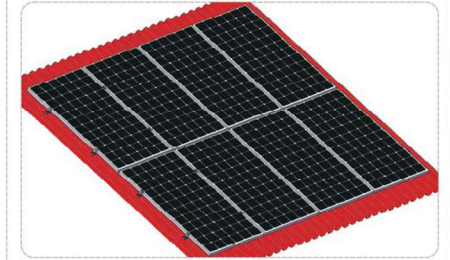


Figure 2 (a)



Figure 2 (b)

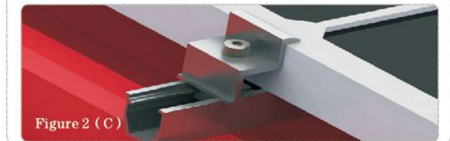


Figure 2 (c)

### 工程实例照片





# MOUNTING BROCHURE

## 彩钢瓦屋顶支架 (U型支座)



本系统由以下零部件组成/This system consists of the following components:



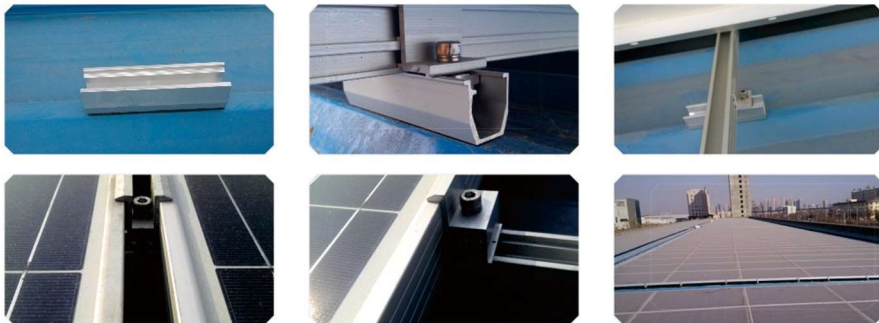
### 产品说明/DESCRIPTION:

- 安装位置/Installation place: 彩钢瓦屋面/Caigang watts roof
- 斜面支架组件/Module slop: 根据实际需求/According to the practical demand
- 拉拔力/Drawing force: 800N
- 风力承载能力/Wind load: 40m/s、32.5kg/m<sup>2</sup>、13级
- 雪载承受力/Snow load: 70kg/m<sup>2</sup>
- 支架类型/Module type 框架/Frame
- 材料/Material: 铝型材/Aluminium profile
- 颜色/Colour: 本色/Natural
- 使用年限/Warranty time: 25 years.

### 优势/ADVANTAGES:

1. 美观/Good Appearance.
2. 简便易安装/Easy and flexible Installation.
3. 多样化设计/Diversified Application.
4. 重量轻/Light dead-weight.
5. 节省安装材料/The mounting system materials are saved.

### 工程实例照片



### 1 第一步/First step

Will U support is fixed on the color steel tile with M5.5\*25 screw, as shown in figure 1:  
将U型支座用M5.5\*25螺钉固定在彩钢瓦上, 如图1所示:

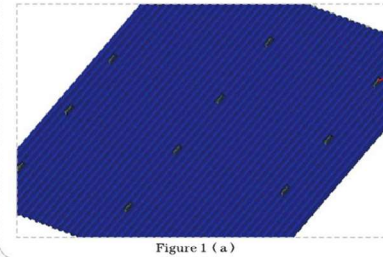


Figure 1 (a)

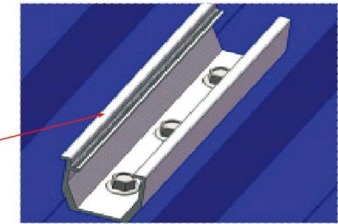


Figure 1 (b)

### 2 第二步/Second step

The guide rail is fixed on the U support with edges and inner six corner bolt, nut slide block, as shown in figure 2:  
将导轨用边卡及内六角螺栓、滑块螺母固定在U型支座上, 如图2所示:

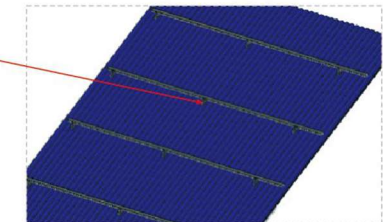
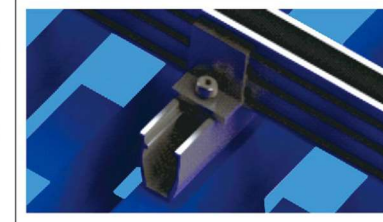


Figure 2

### 3 第三步/Third step

The component side pressing block and the middle block is fixed on the guide rail, as shown in figure 3:  
将组件用边压块及中压块固定在导轨上, 如图3所示:

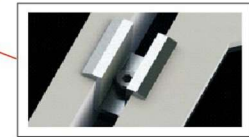
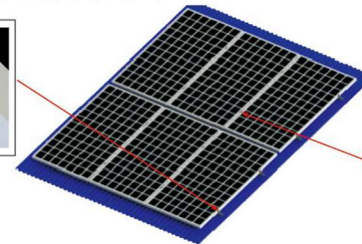
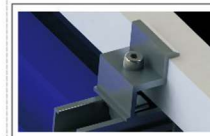
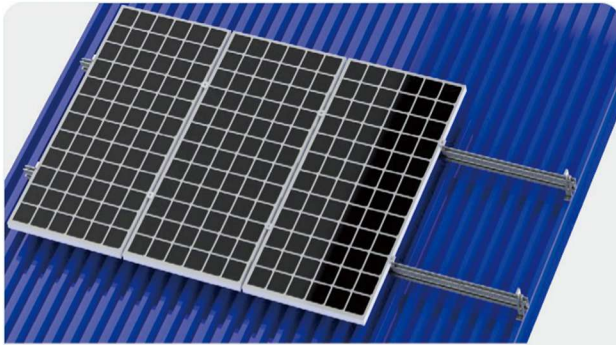
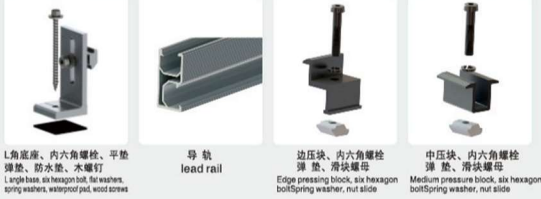


Figure 3

## 彩钢瓦屋顶L角支架



本系统由以下零部件组成/This system consists of the following components:



### 产品说明/DESCRIPTION:

- 安装位置/Installation place:  
彩钢瓦屋面/Caigang watts roof
- 斜面支架组件/Module slop:  
根据实际需求/According to the practical demand
- 拉拔力/Drawing force:  
1000N
- 风力承载能力/Wind load:  
40m/s、32.5kg/m<sup>2</sup>、13级
- 雪载承受力/Snow load:  
70kg/m<sup>2</sup>
- 支架类型/Module type  
框架/Frame
- 材料/Material:  
铝型材/Aluminium profile
- 颜色/Colour:  
本色/Natural
- 使用年限/Warranty time:  
25 years.

### 优势/ADVANTAGES:

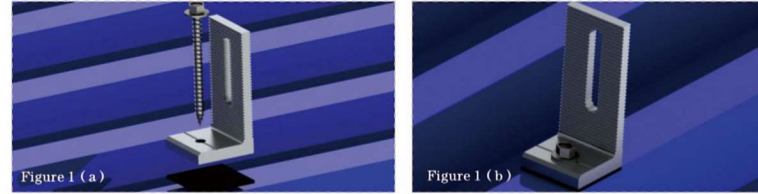
1. 美观/Good Appearance.
2. 简便易安装/Easy and flexible Installation.
3. 多样化设计/Diversified Application.
4. 重量轻/Light dead-weight.
5. 节省安装材料/The mounting system materials are saved.

### 工程实例照片



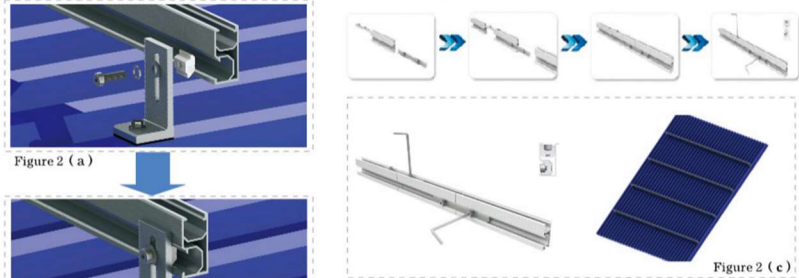
### 1 第一步/First step

By tapping screws L angle base is fixed on the color steel tile on (with waterproof pad), as shown in the following figure: 用自攻螺钉将L角底座固定在彩钢瓦上(配防水垫), 如下图:



### 2 第二步/Second step

The guide with the M8\*25 inner six corner bolt, flat washers, spring washers, slider nut is fixed on the base of L angle, as shown below: 将导轨用M8\*25的内六角螺栓、平垫、弹垫、滑块螺母固定在L角底座上, 如下图:

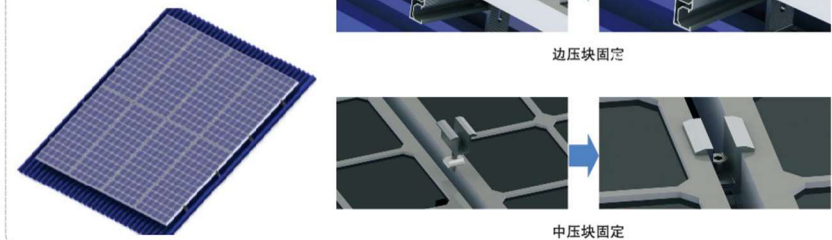


Note: when the array is rather long, guide rail and the guide rail between the connecting piece is fixed, pictured above:  
备注: 当阵列比较长时, 导轨与导轨之间用导轨连接件固定, 如上图:

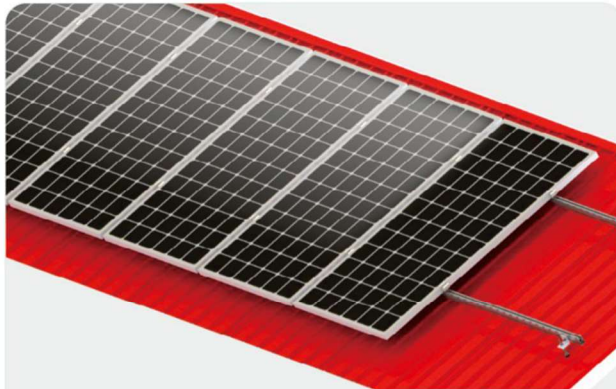
### 3 第三步/Third step

Will be built with edge block, block is fixed on the rail pressure.

The following diagram:  
将组件用边压块、中压块固定在导轨上。  
如下图:



## 彩钢瓦屋顶支架 (双牙螺杆)



本系统由以下零部件组成/This system consists of the following components:



导轨  
lead rail

双牙螺杆、滑块螺母、平弹垫  
内六角螺栓、L连接件  
Double teeth screw, nut, slide  
nut inner six angle bolt, L connector

边压块、内六角螺栓  
弹垫、滑块螺母  
Edge pressing block, six hexagon  
bolt/spring washer, nut slide

中压块、内六角螺栓  
弹垫、滑块螺母  
Medium pressure block, six hexagon  
bolt/spring washer, nut slide

### 产品说明/DESCRIPTION:

- 安装位置/Installation place:  
彩钢瓦屋面/Caigang watts roof
- 斜面支架组件/Module slop:  
根据实际需求/According to the practical demand
- 拉力/Drawing force:  
1000N
- 风力承载能力/Wind load:  
40m/s、32.5kg/m<sup>2</sup>、13级
- 雪载承受力/Snow load:  
70kg/m<sup>2</sup>
- 支架类型/Module type  
框架/Frame
- 材料/Material:  
铝型材、不锈钢/Aluminum, stainless steel
- 颜色/Colour:  
本色/Natural
- 使用年限/Warranty time:  
25 years.

### 优势/ADVANTAGES:

1. 美观/Good Appearance.
2. 简便易安装/Easy and flexible Installation.
3. 多样化设计/Diversified Application.
4. 重量轻/Light dead-weight.
5. 节省安装材料/The mounting system materials are saved.

### 工程实例照片



### 1 第一步/First step

Double teeth screw L angle connection piece is fixed on the Caigang watts, as shown in figure 1:

用双牙螺杆将L角连接件固定在彩钢瓦上, 如图1所示:



Figure 1

### 2 第二步/Second step

The guide rail is fixed on the L angle connecting piece with inner six angle bolt, as shown in figure 2:

用内六角螺栓将导轨固定在L角连接件上, 如图2所示:



Figure 2

### 3 第三步/Third step

With IP block and edge block the solar component is fixed on the guide rail, as shown in figure 3:

用中压块和边压块将太阳能组件固定在导轨上, 如图3所示:



Figure 3 (a)

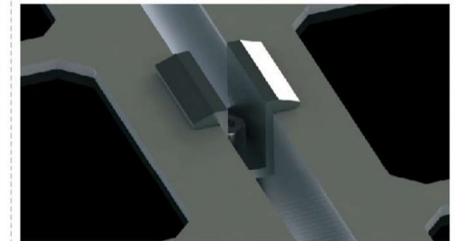


Figure 3 (b)

### 4 第四步/Fourth step

The installation is finished. 安装结束完成。

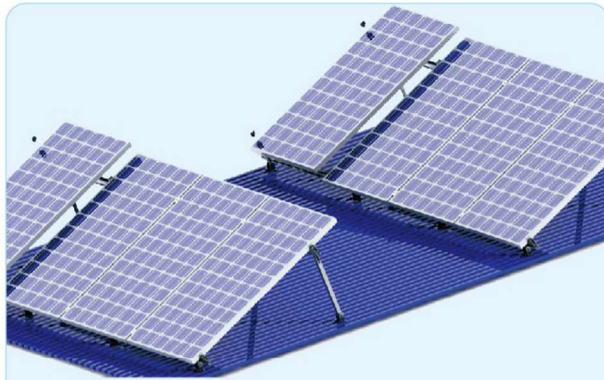


工程实例照片



工程实例照片

## 彩钢瓦屋顶可调节角度支架



本系统由以下零部件组成/This system consists of the following components:



U型底座、内六角螺栓、平垫、弹垫、防水垫、省形件、滑块螺母、木螺钉  
U type base, six hexagon bolt, flat washer, spring washer, waterproof pad, tooth shape, slider, wood screw nut

导轨  
lead rail

边压块、内六角螺栓、弹垫、滑块螺母  
Edge pressing block, six hexagon bolt, spring washer, nut slide

中压块、内六角螺栓、弹垫、滑块螺母  
Medium pressure block, six hexagon bolt, spring washer, nut slide

U型底座、内六角螺栓、平垫、弹垫、防水垫、省形件、木螺钉  
U type base, six hexagon bolt, flat washer, spring washer, waterproof pad, tooth shape, slider, wood screw nut

### 产品说明/DESCRIPTION:

- 安装位置/Installation place:  
彩钢瓦屋面/Caigang watts roof
- 斜面支架组件/Module slop:  
根据实际需求/According to the practical demand
- 拉拔力/Drawing force:  
1000N
- 风力承载能力/Wind load:  
40m/s, 32.5kg/m<sup>2</sup>, 13级
- 雪载承受力/Snow load:  
70kg/m<sup>2</sup>
- 支架类型/Module type  
框架/Frame
- 材料/Material:  
铝型材/Aluminium profile
- 颜色/Colour:  
本色/Natural
- 使用年限/Warranty time:  
25 years.

- ### 优势/ADVANTAGES:
1. 易于安装/Easy Installation.
  2. 可调节角度/Adjustable Angle.
  3. 通用兼容性/Universal Compatibility.

### 工程实例照片



### 1 第一步/First step

Self tapping screw with 2 hearts will be equipped with a tooth form a u-shaped base fixed on the caigang watts (with waterproof pad), the following figure:  
用2颗自攻螺钉将配有齿形件的U型底座固定在彩钢瓦上(配防水垫),如下图所示:

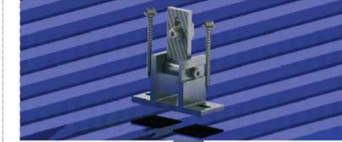


Figure 1(a)

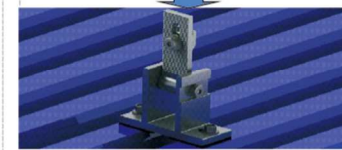


Figure 1(b)

### 2 第二步/Second step

The tooth part guide for M8\*25 six hexagon bolt, flat washers, spring washers, slider nut, pay attention to the installation direction. The following diagram:  
将导轨用M8\*25的内六角螺栓、平垫、弹垫、滑块螺母固定在齿形件上,注意安装的方向。如下图所示:

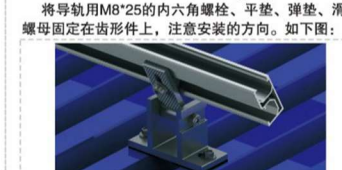


Figure 2(a)

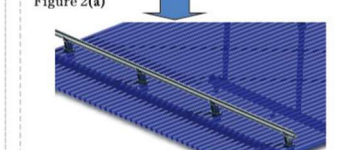


Figure 2(b)

### 3 第三步/Third step

And regulate the assembly good u-shaped base rod part with two self-tapping screws on the caigang watts, the diagram below:  
将装配好的U型底座及调节杆部份用2颗自攻螺钉固定在彩钢瓦上,如下图所示:



Figure 3(a)



Figure 3(b)

注:调节杆部份解析。  
Note: the adjusting rod part analysis.



备注:前后排U型底座在同一条直线上。  
Note: front and rear U type base on the same line.

### 4 第四步/Fourth step

The tooth part guide for M8\*25 six hexagon bolt, flat washers, spring washers, slider nut, pay attention to the installation direction. The following diagram:  
将导轨用M8\*25的内六角螺栓、平垫、弹垫、滑块螺母固定在齿形件上,注意安装方向。如下图所示:

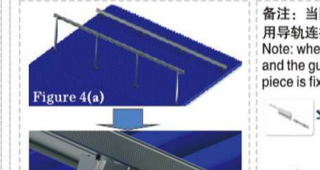
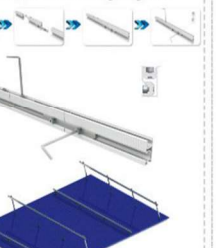


Figure 4(a)



Figure 4(b)

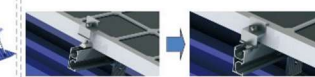
备注:当阵列比较长时,导轨与导轨之间用导轨连接件固定,如下图所示:  
Note: when the array is rather long, guide rail and the guide rail between the connecting piece is fixed, as the following diagram:



### 5 第五步/Fifth step

Will form a side pressure, medium pressure block is fixed on the guide rail. The following diagram:  
将组件用边压块、中压块固定在导轨上。如下图所示:

Figure 5



边压块固定



中压块固定



# MOUNTING BROCHURE

## 彩钢瓦屋顶支架 ( 夹具型 )



本系统由以下零部件组成/This system consists of the following components:



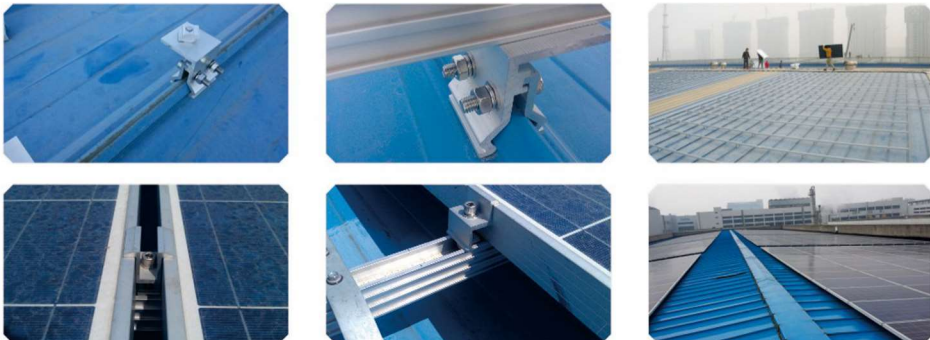
导轨 lead rail  
夹具、内六角螺栓、平弹垫螺母、滑块螺母 Fixture, inner six angle bolt, flat elastic pad Nut, slide the nut  
边压块、内六角螺栓 弹垫、滑块螺母 Edge pressing block, six hexagon bolt/spring washer, nut slide  
中压块、内六角螺栓 弹垫、滑块螺母 Medium pressing block, six hexagon bolt/spring washer, nut slide  
导轨连接件、内六角螺栓 Guide rail connecting piece, inner six angle bolt

### 产品说明/DESCRIPTION:

- 安装位置/Installation place: 彩钢瓦屋面/Caigang watts roof
- 斜面支架组件/Module slop: 根据实际需求/According to the practical demand
- 拉力/Drawing force: 1000N
- 风力承载能力/Wind load: 40m/s、32.5kg/m<sup>2</sup>、13级
- 雪载承受力/Snow load: 70kg/m<sup>2</sup>
- 支架类型/Module type 框架/Frame
- 材料/Material: 铝型材/Aluminium profile
- 颜色/Colour: 本色/Natural
- 使用年限/Warranty time: 25 years.

- ### 优势/ADVANTAGES:
1. 美观/Good Appearance.
  2. 简便易安装/Easy and flexible Installation.
  3. 多样化设计/Diversified Application.
  4. 重量轻/Light dead-weight.

### 工程实例照片



### 1 第一步/First step

The clamp is fixed on the steel tile bolt, as shown in figure 1:  
将夹具用螺栓固定在彩钢瓦上, 如图1所示:

Figure 1 (a)

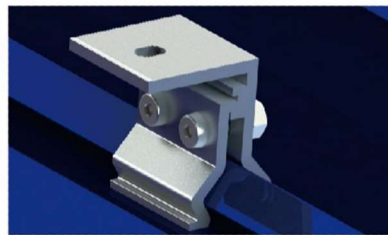
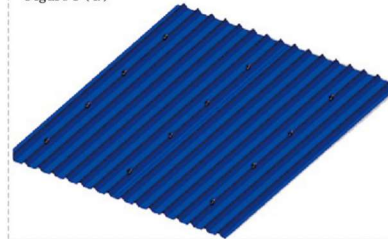


Figure 1 (b)

### 2 第二步/Second step

The rail with six hexagon bolts and nuts are fixed on the fixture block, as shown in figure 2:  
将导轨用内六角螺栓与滑块螺母固定在夹具上, 如图2所示:

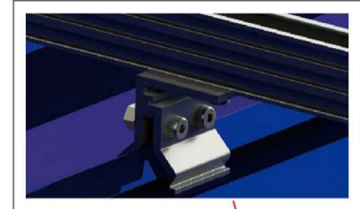
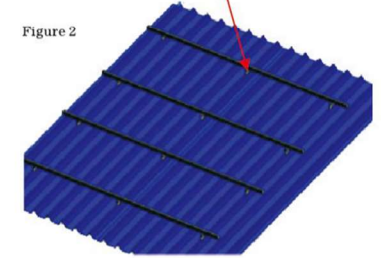


Figure 2



### 3 第三步/Third step

The component side pressing block and the middle block is fixed on the guide rail, as shown in figure 3:  
将组件用边压块及中压块固定在导轨上, 如图3所示:

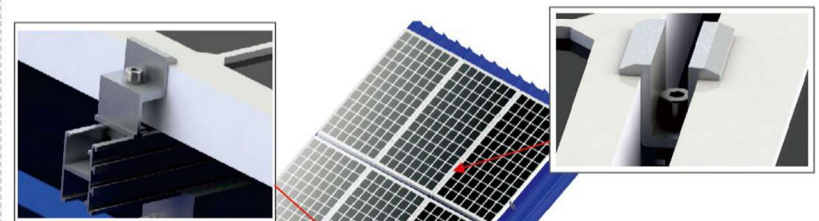
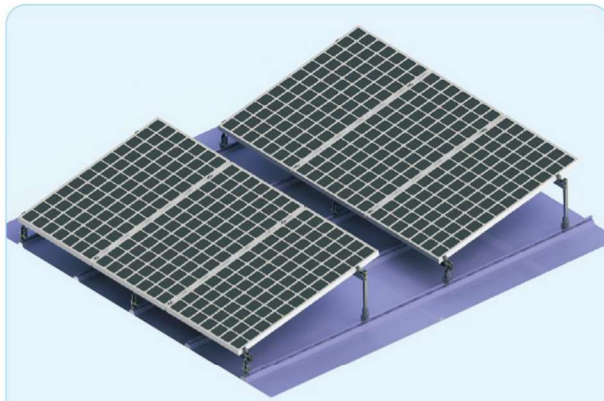


Figure 3

## 彩钢瓦屋顶支架 ( 夹具角度型 )



本系统由以下零部件组成/This system consists of the following components:



### 产品说明/DESCRIPTION:

- 安装位置/Installation place: 彩钢瓦屋面/Caigang watts roof
- 斜面支架组件/Module slop: 根据实际需求/According to the practical demand
- 拉拔力/Drawing force: 1000N
- 风力承载力/Wind load: 40m/s、32.5kg/m<sup>2</sup>、13级
- 雪载承受力/Snow load: 70kg/m<sup>2</sup>
- 支架类型/Module type 框架/Frame
- 材料/Material: 铝型材/Aluminium profile
- 颜色/Colour: 本色/Natural
- 使用年限/Warranty time: 25 years.

### 优势/ADVANTAGES:

1. 美观/Good Appearance.
2. 简便易安装/Easy and flexible Installation.
3. 多样化设计/Diversified Application.
4. 重量轻/Light dead-weight.

### 工程实例照片



### 1 第一步/First step

The fixture with M8\*30 inner six angle bolt is fixed on the Caigang watts, as shown below:  
将夹具用M8\*30的内六角螺栓固定在彩钢瓦上, 如下图:

Figure 1(a)

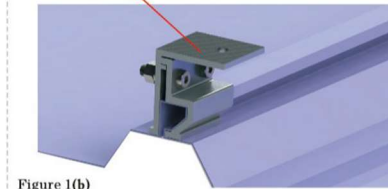


Figure 1(b)

### 2 第二步/Second step

Then use the M8\*30 inner six angle bolt pre packed around the feet are fixed on the fixture; the following chart:  
然后用M8\*30的内六角螺栓将预装好的前后脚固定在夹具上; 如下图:

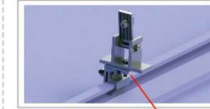


Figure 2(a)

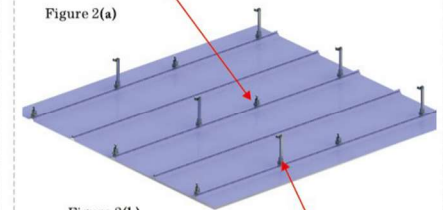


Figure 2(b)



Figure 2(c)

### 3 第三步/Third step

then the guide rail slider fixed nut and M8\*25 pre packaged within the six angle bolts, as shown below:  
然后将导轨用预装好的滑块螺母及M8\*25的内六角螺栓固定, 如下图:



Figure 3(a)

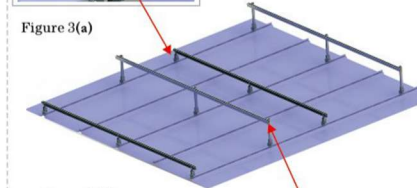


Figure 3(b)

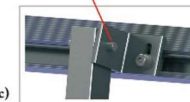
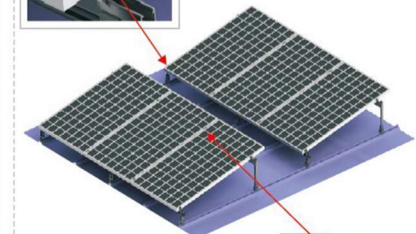
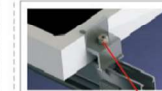


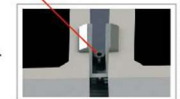
Figure 3(c)

### 4 第四步/Fourth step

The installation component, using the pressure piece, inner six angle bolt and nut component slide block is fixed on the guide rail.  
安装组件, 用压块、内六角螺栓及滑块螺母将组件固定在导轨上。如下图:



The installation is finished.  
安装结束完成。

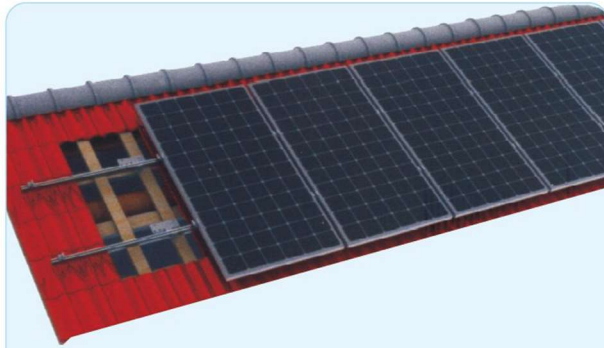






# MOUNTING BROCHURE

## 琉璃瓦屋顶支架 (直弯钩型)



本系统由以下零部件组成/This system consists of the following components:



导轨 lead rail  
 弯钩、内六角螺栓、平弹垫、滑块螺母、木螺钉 Hook, inner six angle bolt, flat elastic pad, slide the nut, wood screws  
 边压块、内六角螺栓、弹垫、滑块螺母 Edge pressing block, six hexagon bolt/spring washer, nut slide  
 中压块、内六角螺栓、弹垫、滑块螺母 Medium pressure block, six hexagon bolt/spring washer, nut slide

### 产品说明/DESCRIPTION:

- 安装位置/Installation place: 琉璃瓦屋面/Glazed tile roof
- 斜面支架组件/Module slop: 根据实际需求/According to the practical demand
- 拉拔力/Drawing force: 1000N
- 风力承载能力/Wind load: 40m/s、32.5kg/m<sup>2</sup>、13级
- 雪载承受力/Snow load: 70kg/m<sup>2</sup>
- 支架类型/Module type 框架/Frame
- 材料/Material: 铝型材、不锈钢/Aluminum, stainless steel
- 颜色/Colour: 本色/Natural
- 使用年限/Warranty time: 25 years.

- ### 优势/ADVANTAGES:
1. 美观/Good Appearance.
  2. 简便易安装/Easy and flexible Installation.
  3. 多样化设计/Diversified Application.
  4. 重量轻/Light dead-weight.
  5. 节省安装材料/The mounting system materials are saved.



### 工程实例照片



### 1 第一步/First step

Remove tiles, by tapping screws will hook is fixed on the steel purlin, as shown in figure 1:  
 移开瓦片, 用自攻螺钉将弯钩固定在檩条上, 如图1所示:

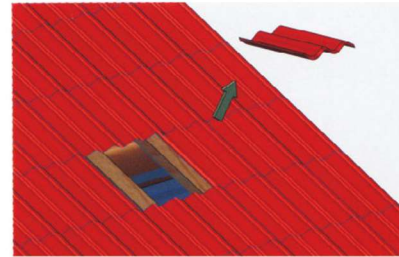


Figure 1 (a)

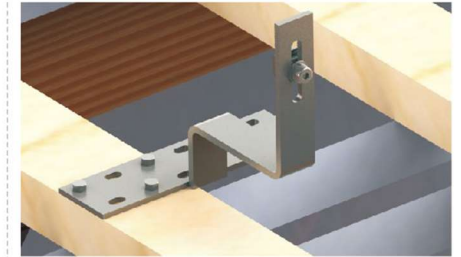


Figure 1 (b)

### 2 第二步/Second step

The guide rail is fixed on the hook for inner six angle bolt, as shown in figure 2:  
 用内六角螺栓将导轨固定在弯钩上, 如图2所示:

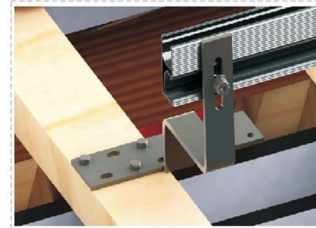


Figure 2

### 3 第三步/Third step

With IP block and edge block the solar component is fixed on the guide rail, as shown in figure 3:  
 用中压块及边压块将太阳能组件固定在导轨上, 如图3所示:

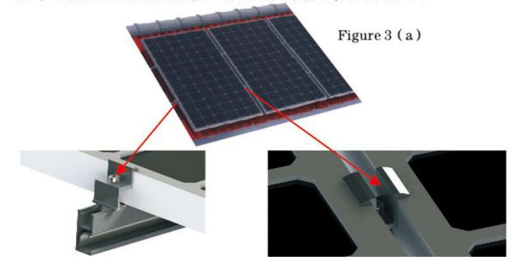


Figure 3 (a)

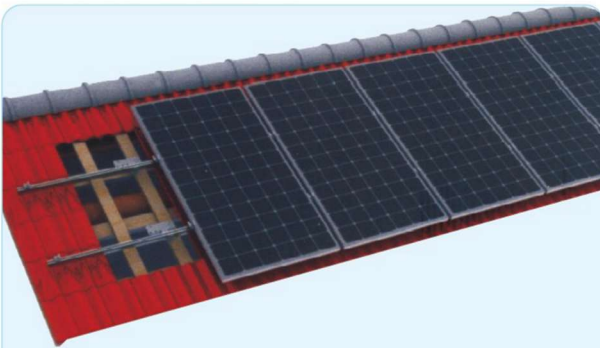
Figure 3 (b)

Figure 3 (c)

### 工程实例照片



## 琉璃瓦屋顶支架 (平弯钩型)



本系统由以下零部件组成/This system consists of the following components:



导轨  
lead rail

弯钩、内六角螺栓、平弹垫  
滑块螺母、木螺钉  
Hook, inner six angle bolt, flat elastic pad  
Slide the nut, wood screws

边压块、内六角螺栓  
弹垫、滑块螺母  
Edge pressing block, six hexagon  
bolt/spring washer, nut slide

中压块、内六角螺栓  
弹垫、滑块螺母  
Medium pressure block, six hexagon  
bolt/spring washer, nut slide

### 产品说明/DESCRIPTION:

- 安装位置/Installation place:  
琉璃瓦屋面/Glazed tile roof
- 斜面支架组件/Module slop:  
根据实际需求/According to the practical demand
- 拉拔力/Drawing force:  
1000N
- 风力承载能力/Wind load:  
40m/s、32.5kg/m<sup>2</sup>、13级
- 雪载承受力/Snow load:  
70kg/m<sup>2</sup>
- 支架类型/Module type  
框架/Frame
- 材料/Material:  
铝型材、不锈钢/Aluminum, stainless steel
- 颜色/Colour:  
本色/Natural
- 使用年限/Warranty time:  
25 years.

### 优势/ADVANTAGES:

1. 美观/Good Appearance.
2. 简便易安装/Easy and flexible Installation.
3. 多样化设计/Diversified Application.
4. 重量轻/Light dead-weight.
5. 节省安装材料/The mounting system materials are saved.



### 工程实例照片



### 1 第一步/First step

Remove tiles, by tapping screws will hook is fixed on the steel purlin, as shown in figure 1:  
移开瓦片, 用自攻螺钉将弯钩固定在檩条上, 如图1所示:

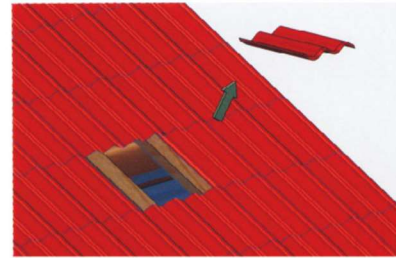


Figure 1 (a)

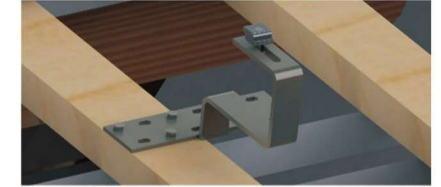


Figure 1 (b)

### 2 第二步/Second step

The guide rail is fixed on the hook for inner six angle bolt, as shown in figure 2:  
用内六角螺栓将导轨固定在弯钩上, 如图2所示:

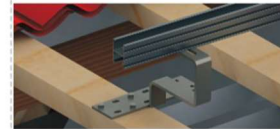


Figure 2

### 3 第三步/Third step

With IP block and edge block the solar component is fixed on the guide rail, as shown in figure 3:  
用中压块及边压块将太阳能组件固定在导轨上, 如图3所示:

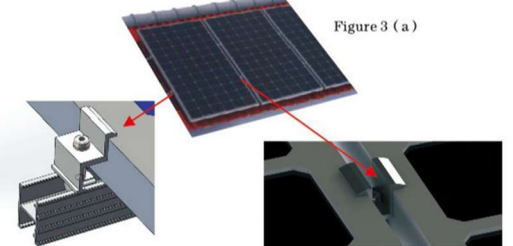
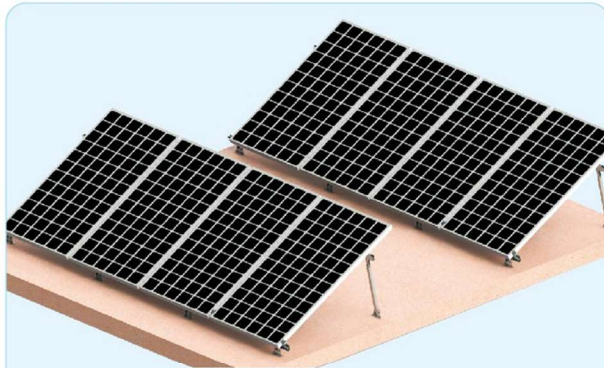


Figure 3 (a)

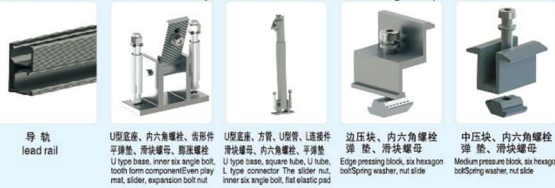
Figure 3 (b)

Figure 3 (c)

## 水泥地面可调节角度支架



本系统由以下零部件组成/This system consists of the following components:



### 产品说明/DESCRIPTION:

- 安装位置/Installation place:  
水泥地面/Cement floor
- 斜面支架组件/Module slop:  
根据实际需求/According to the practical demand
- 风力承载能力/Wind load:  
40m/s、32.5kg/m<sup>2</sup>、13级
- 雪载承受力/Snow load:  
70kg/m<sup>2</sup>
- 支架类型/Module type  
框架/Frame
- 材料/Material:  
铝型材/Aluminium profile
- 颜色/Colour:  
本色/Natural
- 使用年限/Warranty time:  
25 years.

### ADVANTAGES:

1. 多样化应用/Diversified Application.
2. 通用的兼容性/Universal Compatibility.
3. 容易便捷安装/Easy and flexible Installation.
4. 可以大量安装太阳能组件/The quantity of the modules that could be installed is large.

### 工程实例照片



### 1 第一步/First step

With expansion bolt will be equipped with a tooth form a u-shaped base fixed on the cement floor, the diagram below:  
用膨胀螺栓将配有齿形件的U型底座固定在水泥地面上, 如下图:



Figure 1(a)



Figure 1(b)

### 3 第三步/Third step

And regulate the assembly good u-shaped base rod part by expansion bolt in the cement ground, the diagram below:  
将装配好的U型底座及调节杆部份用膨胀螺栓固定在水泥地面上, 如下图:



Figure 3(a)



Figure 3(b)

注: 调节杆部份解析。  
Note: the adjusting rod part analysis.



备注: 前后排U型底座在同一条直线上。  
Note: front and rear U type base on the same line.

### 2 第二步/Second step

The tooth part guide for M8\*25 six hexagon bolt, flat washers, spring washers, slider nut, pay attention to the installation direction. The following diagram:  
将导轨用M8\*25的内六角螺栓、平垫、弹垫、滑块螺母固定在齿形件上, 注意安装的方向。如下图:



Figure 2(a)



Figure 2(b)

### 4 第四步/Fourth step

The guide rail with M8\*25 inner six angle bolt, a plain cushion, an elastic cushion, slider nut is fixed on the L connections, pay attention to the installation direction. The following diagram:  
将导轨用M8\*25的内六角螺栓、平垫、弹垫、滑块螺母固定在L连接件上, 注意安装方向。如下图:



备注: 当阵列比较长时, 导轨与导轨之间用导轨连接件固定, 如下图:  
Note: when the array is rather long, guide rail and the guide rail between the connecting piece is fixed, as the following diagram:



### 5 第五步/Fifth step

Will form a side pressure, medium pressure block is fixed on the guide rail. The following diagram:  
将组件用边压块、中压块固定在导轨上。如下图:

Figure 5

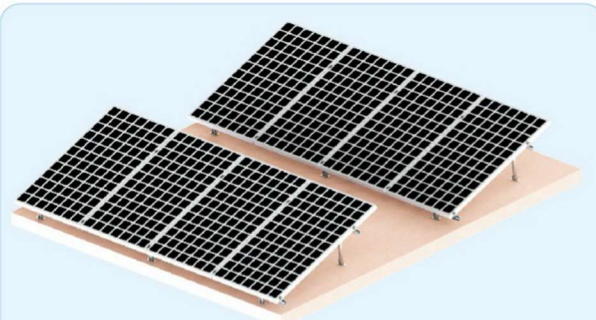


边压块固定



中压块固定

## 水泥地面固定角度支架



本系统由以下零部件组成/This system consists of the following components:



### 产品说明/DESCRIPTION:

- 安装位置/Installation place:  
地面/平面屋面/Ground / flat roof
- 斜面支架组件/Module slop:  
根据实际需求/According to the practical demand
- 风力承载能力/Wind load:  
40m/s、32.5kg/m<sup>2</sup>、13级
- 雪承载能力/Snow load:  
70kg/m<sup>2</sup>
- 支架类型/Module type  
框架/Frame
- 材料/Material:  
铝型材/Aluminium profile
- 颜色/Colour:  
本色/Natural
- 使用年限/Warranty time:  
25 years.

### ADVANTAGES: 1. 多样化应用/Diversified Application.

2. 通用的兼容性/Universal Compatibility.
3. 容易便捷安装/Easy and flexible Installation.
4. 可以大量安装太阳能组件/The quantity of the modules that could be installed is large.

### 工程实例照片



### 1 第一步/First step

With expansion bolt will be equipped with a tooth form a u-shaped base fixed on the cement floor, the diagram below:  
用膨胀螺栓将配有齿形件的U型底座固定在水泥地面上, 如下图:



Figure 1(a)



Figure 1(b)

### 3 第三步/Third step

U type base and a square tube part is assembled and fixed on cement ground by expansion bolt, the diagram below:  
将装配好的U型底座及方管部份用膨胀螺栓固定在水泥地面上, 如下图:

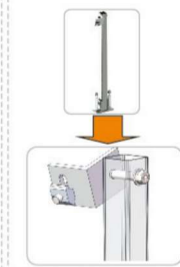


Figure 3(a)



Figure 3(b)

注: 方管、L连接件部分解析。  
Note: L square tube, connecting part analysis.



备注: 前后排U型底座在同一条直线上。  
Note: front and rear U type base on the same line.

### 2 第二步/Second step

The tooth part guide for M8\*25 six hexagon bolt, flat washers, spring washers, slider nut, pay attention to the installation direction. The following diagram:  
将导轨用M8\*25的内六角螺栓、平垫、弹垫、滑块螺母固定在上, 注意安装的方向。如下图:



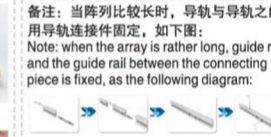
Figure 2(a)



Figure 2(b)

### 4 第四步/Fourth step

The guide rail with M8\*25 inner six angle bolt, a plain cushion, an elastic cushion, slider nut is fixed on the L connections, pay attention to the installation direction. The following diagram:  
将导轨用M8\*25的内六角螺栓、平垫、弹垫、滑块螺母固定在上, 注意安装方向。如下图:



备注: 当阵列比较长时, 导轨与导轨之间用导轨连接件固定, 如下图:  
Note: when the array is rather long, guide rail and the guide rail between the connecting piece is fixed, as the following diagram:

### 5 第五步/Fifth step

Will form a side pressure, medium pressure block is fixed on the guide rail. The following diagram:  
将组件用边压块、中压块固定在导轨上。如下图:



Figure 5

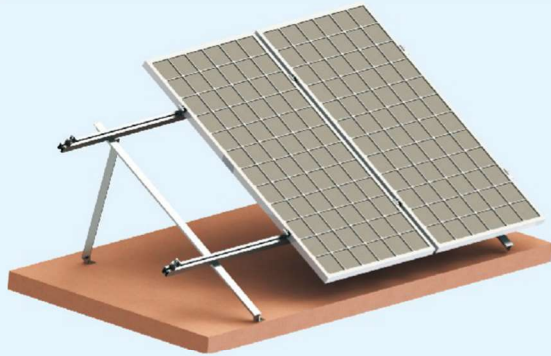


边压块固定

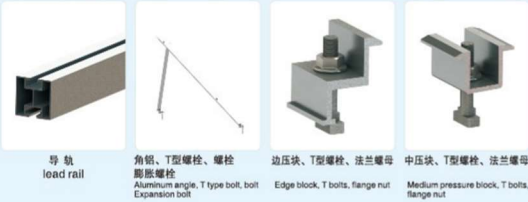


中压块固定

## 水泥地面角铝支架



本系统由以下零部件组成/This system consists of the following components:



### 产品说明/DESCRIPTION:

- 安装位置/Installation place:  
水泥地面/Cement floor
- 斜面支架组件/Module slop:  
根据实际需求/According to the practical  
demand
- 风力承载能力/Wind load:  
40m/s, 32.5kg/m<sup>2</sup>、13级
- 雪载承受力/Snow load:  
70kg/m<sup>2</sup>
- 支架类型/Module type  
框架/Frame
- 材料/Material:  
铝型材/Aluminium profile
- 颜色/Colour:  
本色/Natural
- 使用年限/Warranty time:  
25 years.

### ADVANTAGES:

1. 多样化应用/Diversified Application.
2. 通用的兼容性/Universal Compatibility.
3. 容易便捷安装/Easy and flexible Installation.
4. 可以大量安装太阳能组件/The quantity of the modules that could be installed is large.



### 工程实例照片



### 1 第一步/First step

The L angle aluminum connecting piece fixed on the cement ground with expansion bolts, as shown below:

将L角铝连接件用膨胀螺栓固定在水泥地面上，如图示：



Figure 1

### 3 第三步/Third step

The guide rail is fixed on the angle aluminum front support with T type bolt M8\*25, as shown in fig.:

将导轨用M8\*25的T型螺栓固定在前角铝上，如图示：



Figure 3 (a)



Figure 3 (b)

### 2 第二步/Second step

Use M8\*30 bolts to front support and the back support angle aluminum fixed on the angle aluminum connecting piece, as shown below:

用M8\*30的螺栓将角铝前撑和后撑固定在前角铝连接件上，如图示：

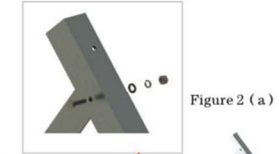


Figure 2 (a)

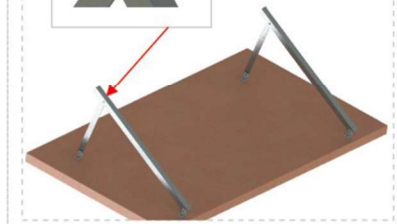


Figure 2 (b)

### 4 第四步/Fourth step

The solar module with edge block, medium pressure block and T type bolt is fixed on the guide rail, as shown in fig.:

将太阳能组件用边压块、中压块及T型螺栓固定在导轨上，如图示：

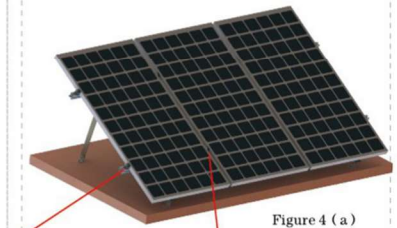


Figure 4 (a)

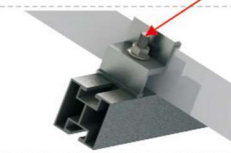


Figure 4 (b)

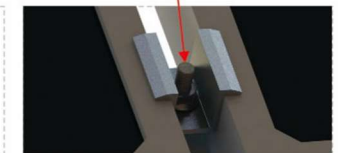
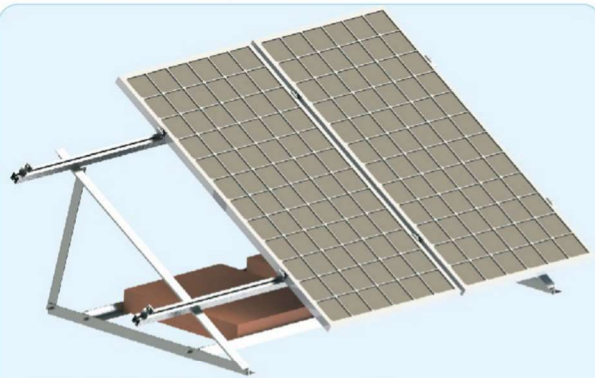


Figure 4 (c)

## 水泥地面角铝支架 (载重式)



本系统由以下零部件组成/This system consists of the following components:



导轨 load rail  
角铝、外六角螺栓 平弹垫螺母 Aluminum angle, outer six angle bolt fall spring pad nut  
角铝地面框 Angle aluminum ground box  
边压块、T型螺栓、法兰螺母 Edge block, T bolts, flange nut  
中压块、T型螺栓、法兰螺母 Medium pressure block, T bolts, flange nut

### 产品说明/DESCRIPTION:

- 安装位置/Installation place:  
地面/平面屋顶/Ground / flat roof
- 斜面支架组件/Module slop:  
根据实际需求/According to the practical demand
- 风力承载能力/Wind load:  
40m/s、32.5kg/m<sup>2</sup>、13级
- 雪载承受力/Snow load:  
70kg/m<sup>2</sup>
- 支架类型/Module type  
框架/Frame
- 材料/Material:  
铝型材/Aluminium profile
- 颜色/Colour:  
本色/Natural
- 使用年限/Warranty time:  
25 years.

### ADVANTAGES:

1. 多样化应用/Diversified Application.
2. 通用的兼容性/Universal Compatibility.
3. 容易便捷安装/Easy and flexible Installation.
4. 可以大量安装太阳能组件/The quantity of the modules that could be installed is large.

### 工程实例照片



### 1 第一步/First step

The angle aluminum bottom bracing, ground frame by a connecting piece and a bolt, as shown below: 将角铝底撑、地面框用连接件及螺栓固定, 如下图:

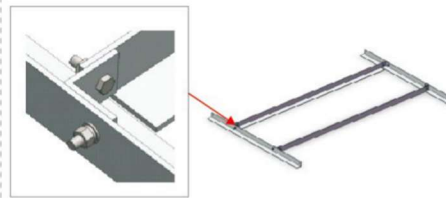


Figure 1

### 2 第二步/Second step

Then will cement the heavy pressure on aluminum angle ground frame; the following chart: 然后将水泥重物压在角铝地面框上; 如下图:

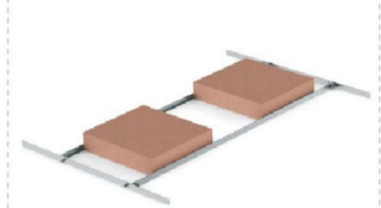


Figure 2

### 3 第三步/Third step

Then M8 will bolt angle aluminum front supporting and aluminum angle brace is fixed on the bottom support on aluminum angle. The following diagram: 然后用M8的螺栓将角铝前撑和角铝后撑固定在角铝底撑上。如下图:

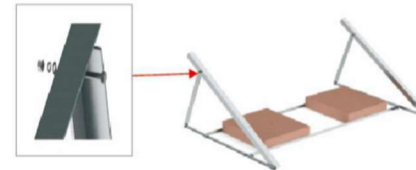


Figure 3

### 4 第四步/Fourth step

The guide for M8\*25T type bolt is fixed on the angle aluminum front support, as shown below: 将导轨用M8\*25T型螺栓固定在角铝前撑上, 如下图:

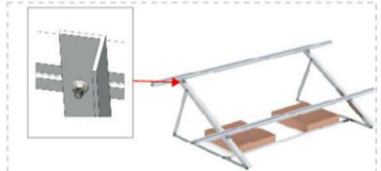


Figure 4

### 5 第五步/Fifth step

The component side pressing block and the middle block is fixed on the guide rail, as shown below: 将组件用边压块及中压块固定在导轨上, 如下图:

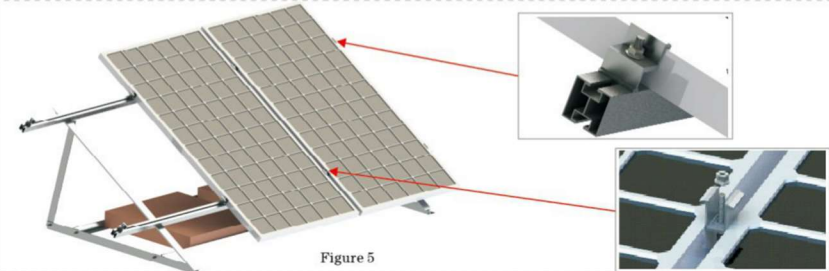


Figure 5



备注: 具体安装尺寸参考所给出的工程图。

Note: the specific installation size reference given by the engineering drawings.

## 前后立柱地面支架



本系统由以下零部件组成/This system consists of the following components:

				
导轨 lead rail	U型底座、方管、L型连接件、平垫垫、弹性垫块、内六角螺栓 U type base, square tube, L type connector, the slider nut, inner six angle bolt, flat elastic pad	U型底座、方管、L型连接件、平垫垫、弹性垫块、内六角螺栓 U type base, square tube, L type connector, the slider nut, inner six angle bolt, flat elastic pad	边压块、内六角螺栓、弹垫、滑块螺母 Edge pressing block, six hexagon bolt, spring washer, nut slide	中压块、内六角螺栓、弹垫、滑块螺母 Medium pressure block, six hexagon bolt, spring washer, nut slide

### 产品说明/DESCRIPTION:

- 安装位置/Installation place:  
地面/平面屋顶/Ground / flat roof
- 斜面支架组件/Module slop:  
根据实际需求/According to the practical demand
- 风力承载能力/Wind load:  
40m/s、32.5kg/m<sup>2</sup>、13级
- 雪载承受力/Snow load:  
70kg/m<sup>2</sup>
- 支架类型/Module type  
框架/Frame
- 材料/Material:  
铝型材/Aluminium profile
- 颜色/Colour:
- 使用年限/Warranty time:

### ADVANTAGES: 1. 容易安装/Easy installation.

2. 它不破坏植被/It does not damage the vegetation.
3. 强度高, 安装范围广/High strength, wide range of installation

### 工程实例照片



### 1 第一步/First step

U type base and a square tube part is assembled and fixed on cement ground by expansion bolt, the diagram below:  
将装配好的U型底座及方管部份用膨胀螺栓固定在水泥地面上, 如下图:



Figure 1(a)



Figure 1(b)

### 2 第二步/Second step

U type base and a square tube part is assembled and fixed on cement ground by expansion bolt, the diagram below:  
将装配好的U型底座及方管部份用膨胀螺栓固定在水泥地面上, 如下图:



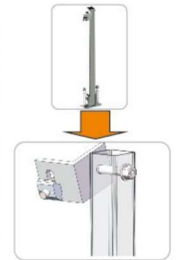
Figure 2(a)



Figure 2(b)

备注: 前后排U型底座在同一条直线上。  
Note: front and rear U type base on the same line.

注: 方管、L连接件部分解析。  
Note: L square tube, connecting part analysis.



### 3 第三步/Third step

The guide rail with M8\*25 inner six angle bolt, a plain cushion, an elastic cushion, slider nut is fixed on the L connections, pay attention to the installation direction. The following diagram:  
将导轨用M8\*25的内六角螺栓、平垫、弹垫、滑块螺母固定在L连接件上, 注意安装方向。如下图:

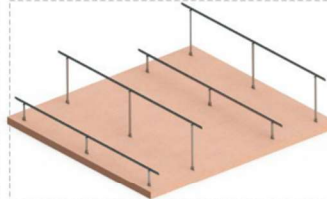


Figure 3(a)



Figure 3(b)

备注: 当阵列比较长时, 导轨与导轨之间用导轨连接件固定, 如下图:  
Note: when the array is rather long, guide rail and the guide rail between the connecting piece is fixed, as the following diagram:



### 4 第四步/Fourth step

Will form a side pressure, medium pressure block is fixed on the guide rail. The following diagram:  
将组件用边压块、中压块固定在导轨上。如右图:

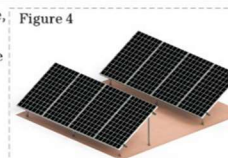


Figure 4

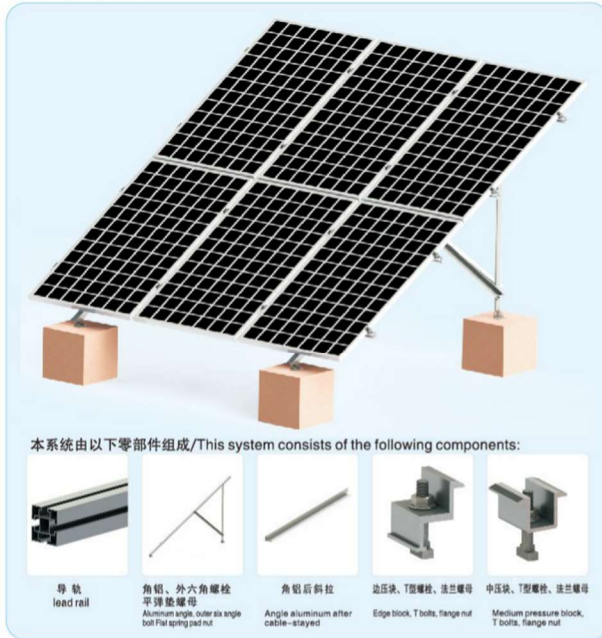


边压块固定



中压块固定

## 双排角铝支架



### 产品说明/DESCRIPTION:

- 安装位置/Installation place:  
地面/平面屋顶/Ground / flat roof
- 斜面支架组件/Module slop:  
根据实际需求/According to the practical demand
- 风力承载能力/Wind load:  
40m/s、32.5kg/m<sup>2</sup>、13级
- 雪载承受力/Snow load:  
70kg/m<sup>2</sup>
- 支架类型/Module type  
框架/Frame
- 材料/Material:  
铝型材/Aluminium profile
- 颜色/Colour:  
本色/Natural
- 使用年限/Warranty time:  
25 years.

- ### ADVANTAGES:
1. 容易安装/Easy installation.
  2. 它不破坏植被/It does not damage the vegetation.
  3. 强度高，安装范围广/High strength, wide range of installation

### 工程实例照片



### 1 第一步/First step

The base is fixed on the embedded concrete pier, in the angle of the aluminum part is fixed by the bolt M8\*30, the diagram below:  
将底座固定在预埋好的水泥墩上，再将角铝部分用M8\*30的螺栓固定，如图1所示:

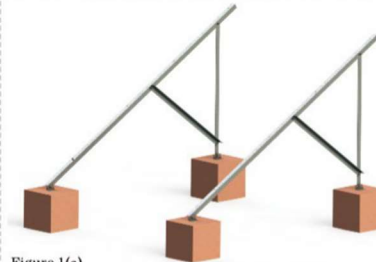


Figure 1(a)

节点图/Node graph:



Figure 1(b)

Figure 1(c)

### 2 第二步/Second step

The guide rail with T type bolt M8\*25 fixed on the oblique beam. The following diagram:  
将导轨用M8\*25的T型螺栓固定在斜梁上。如下图:

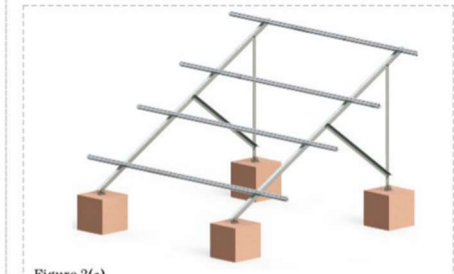


Figure 2(a)

固定节点图:  
Fixed node graph:



Figure 2(b)

### 3 第三步/Third step

Using M8\*30 bolt will be fixed in the post after the cable-stayed column. The following diagram:  
用M8\*30的螺栓将斜拉固定在后立柱上。如下图:

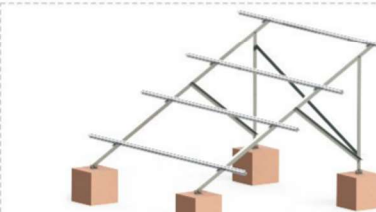


Figure 3(a)

节点图/Node graph:



Figure 3(b)

### 4 第四步/Fourth step

Using the edge block, block, pressure type T bolts and nuts with flange component is fixed on the guide rail. The following diagram:  
用边压块、中压块、T型螺栓及法兰螺母将组件固定在导轨上。如下图:



The installation is finished.  
安装结束完成。





# MOUNTING BROCHURE

## 地脚螺钉/Ground Screw

螺旋接地螺钉由Q235材料制成。我们有不同规格的法兰顶部和管顶部。我们的标准厚度为3毫米、3.5毫米和2.75毫米，长度为1200毫米、1600毫米、1800毫米和2000毫米。长度和尺寸也可以定制。它可以用于多种应用，如定时器框架结构；广告和交通系统；城市、园林和景观建设；大厅和集装箱结构；围栏系统、太阳能系统；旗杆和横幅等。

Uisolar Ground Screw is made of Q235 material. We have flange top and tube top types with different specification. Our standard thickness is 3mm. 3.5mm and 2.75mm and length with 1200mm, 1600mm, 1800mm, 2000mm The length and size could also be customized. It can be used for many kinds of application, like Timer-frame Construction: Advertising and traffic systems: Urban, Garden and Landscape Construction; Hall and container Construction; Fencing Systems, Solar systems: Flag Poles Banners etc.



### 简介/Brief Introduction

材料: Q235  
表面: 热镀锌  
厚度: 3.0毫米/2.75毫米/3.5毫米  
系列: 法兰顶部、管顶部  
保修: 10年保修;25年使用寿命。

Material: Q235  
Surface Hot dip galvanization  
Salt spray  
Thickness:3.0mm/2.75mm/3.5mm  
Series: Flange Top, Tube Top  
Warranty: 10 years warranty; 25 years service life.

### 优势/Advantages

- 01 与所有类型的结构兼容。  
我们的技术部门会根据客户的需要调整我们的地面螺旋桩头。
- 02 基础解免混凝土  
无需混凝土基础
- 03 周边地区仍未受到破坏  
我们产品的特殊配置允许在不进行土地准备工作的情况下插入土地，从而显著降低成本。
- 04 拆卸简单，便于重新定位  
我们的地面螺旋桩的主要优点之一是可以移除它们，减少对环境的影响，并将移除成本降至最低。

- 01 Compatibility with all type of structures.  
Our technical department will adapt the head of our ground screw piles to whatever the need of the customer is.
- 02 Foundation solution concrete free  
No need of Concrete base
- 03 Surrounding areas remains unspoiled  
The special configuration of our products allows the insertion without performing land preparation works,which allows a significant cost reduction.
- 04 Easy removal simple and easy to relocate  
one of the main advantages of our ground screw piles is the possibility of removing them, reducing the envi-

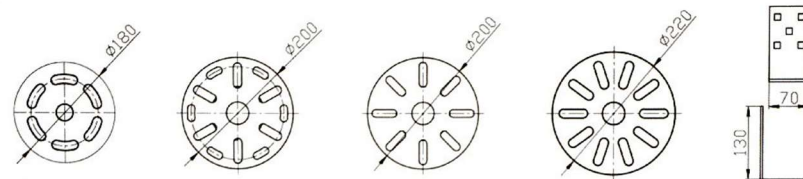
## 地螺杆/Ground Screw



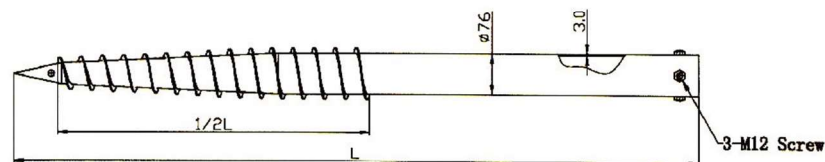
### 规范/Specification

NO	编码1/Code1	外观/Surface	材料/Material	H(mm)	D(mm)	镀锌表面/Galvanized Surface	厚度/Thickness
01	F76xL-2	Hot Galvanized	Q235	Customized	76	≥ 80 μm	3.5mm/2.75mm /3.0mm
02	F76xL-4			Customized	76	≥ 80 μm	
03	F76xL			Customized	76	≥ 80 μm	
04	F76xL			Customized	76	≥ 80 μm	
05	F76xL-A			Customized	76	≥ 80 μm	
06	F76xL-U			Customized	76	≥ 80 μm	

### 法兰式/Flange Type



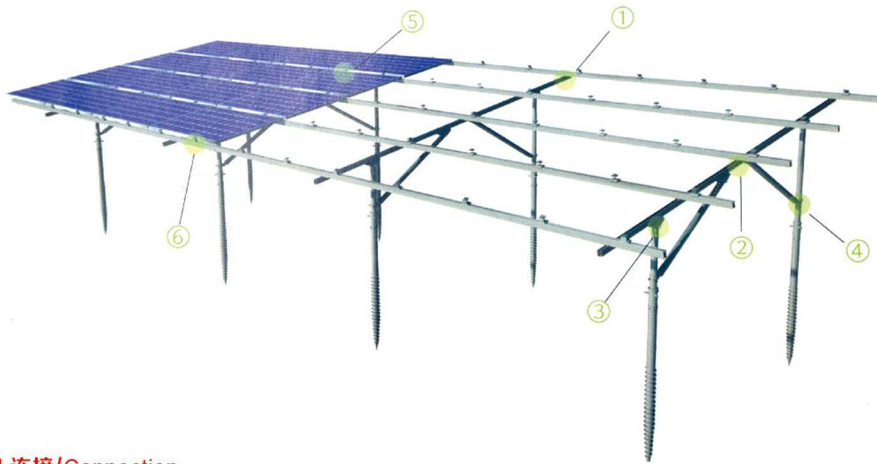
### 管式/Tube Type



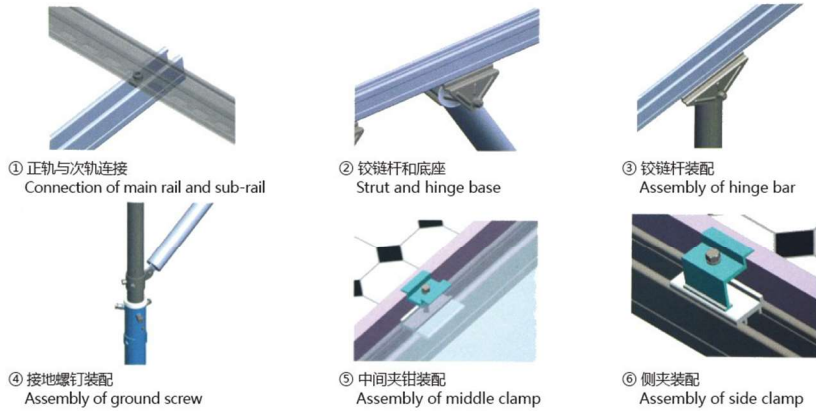


# MOUNTING BROCHURE

## 预览/Preview



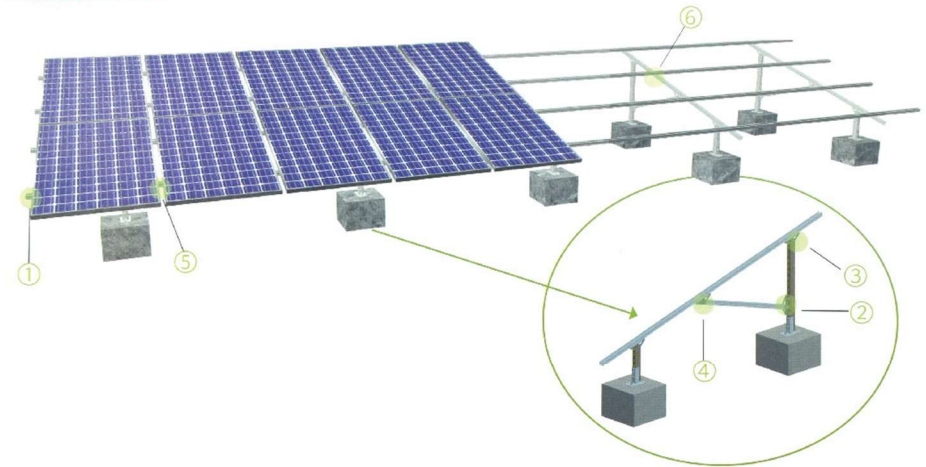
## 连接/Connection



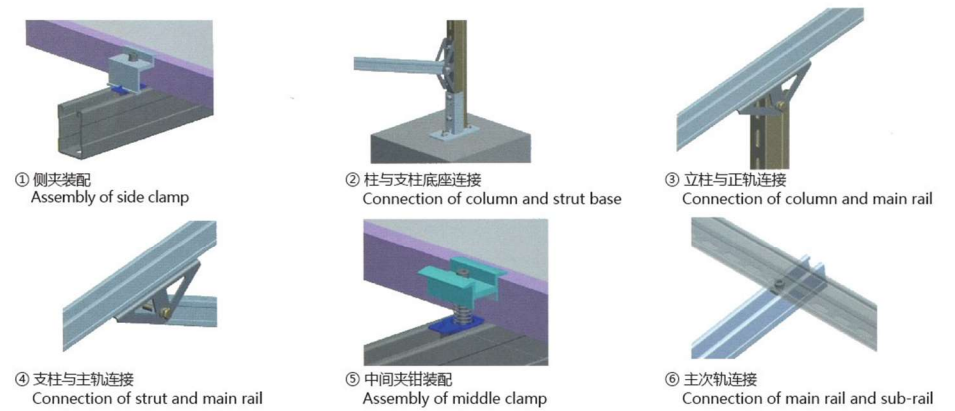
## 组件/Components



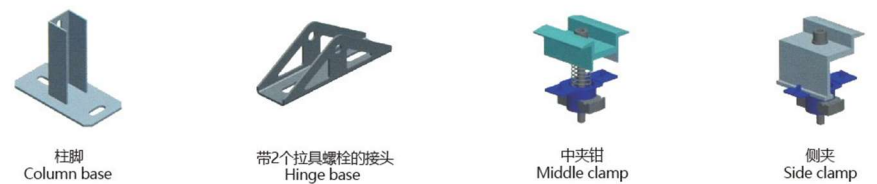
## 预览/Preview



## 连接/Connection



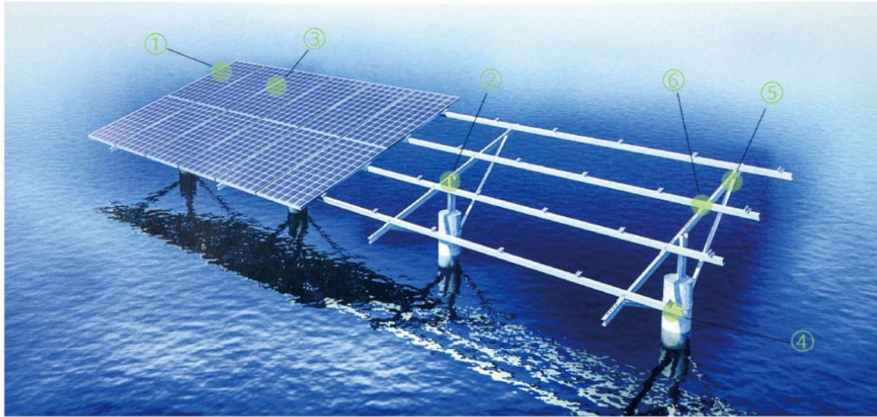
## 组件/Components



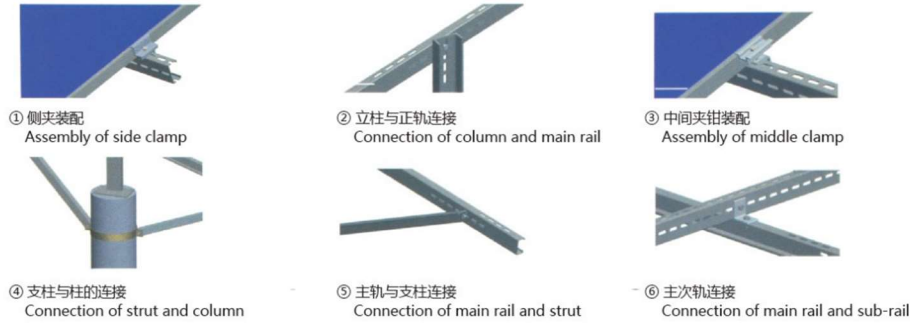


# MOUNTING BROCHURE

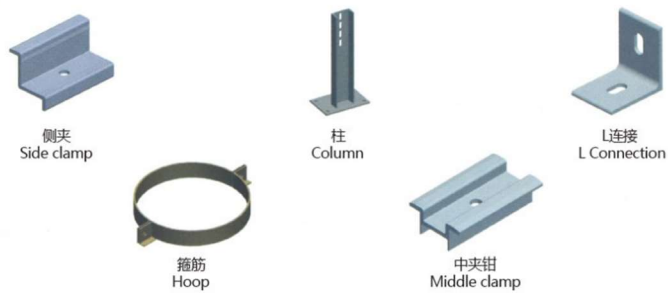
## 预览/Preview



## 连接/Connection



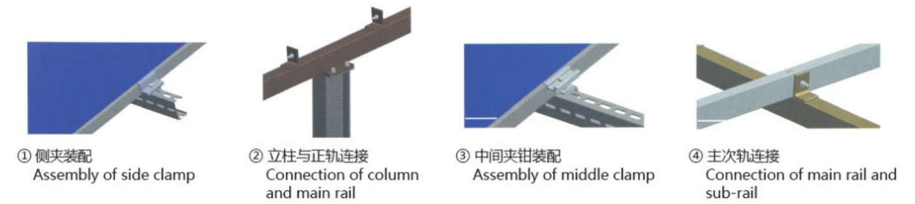
## 组件/Components



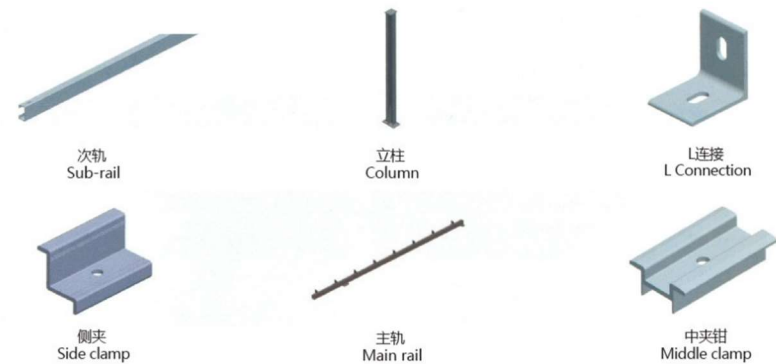
## 预览/Preview



## 连接/Connection



## 组件/Components





# MOUNTING BROCHURE



## 镀锌钢太阳能车棚 太阳能电池系统 Galvanized Steel Solar Carport GSCS-GS Geco Solar Carport System

### 产品特点/Product Features

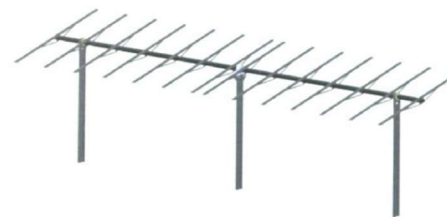
部件采用热镀锌钢，能承受极端气候；  
坚固防水，美观耐用；  
快速安装。

The components are made of hot dip galvanized steel, can withstand extreme climate;  
Firm and water-proof with good looking and high durability;  
Quick installation.

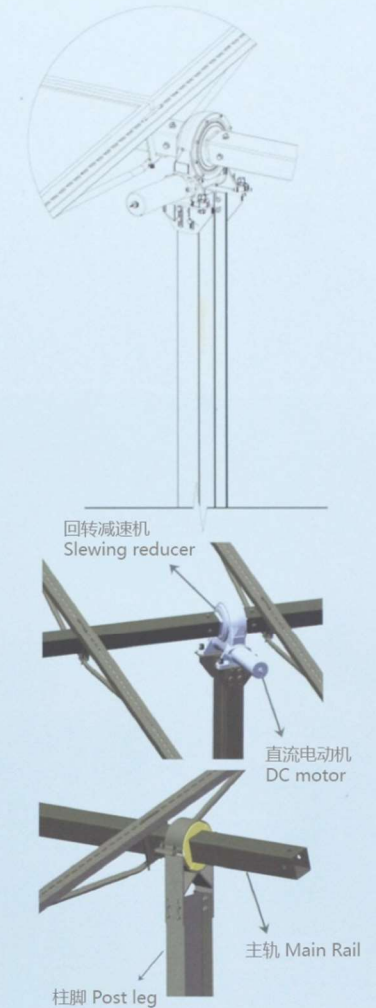
基础 Foundation:	化学植筋 Chemically planted bar
模块规格 Module specification:	根据客户要求 Based on customer requirement
模块排列 Module arrangement:	横向/纵向 Landscape/Portrait
最大风荷载 Maximum Wind Load:	40 m/s (可定制) 40 m/s(customizable)
最大雪荷载 Maximum Snow Load:	1.4KN/m <sup>2</sup> (可定制) 1.4KN/m <sup>2</sup> (customizable)
材料 Material:	钢 Steel
安装倾斜 Installation tilt:	根据客户要求 Based on customer requirements
表面处理 Surface treatment:	热镀锌 Hot dip galvanizing
设计寿命 Design life:	25年 25 years
保险 Warranty:	15年 15 years

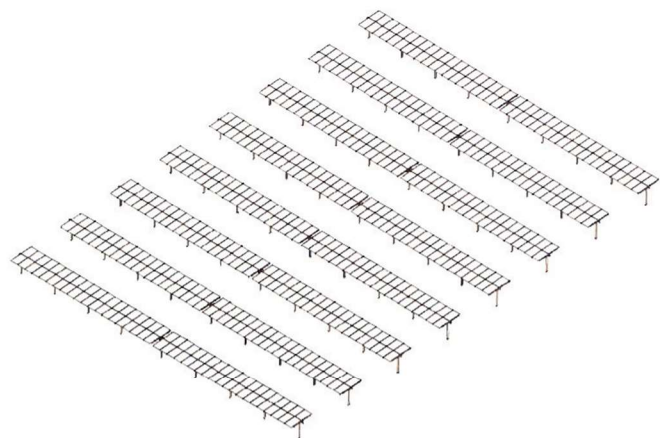
## 太阳跟踪系统 水平单轴跟踪系统 Solar tracking system Horizontal single-axis tracking system

- 01 机械结构，模块化组装，安装方便；  
Mechanical structure, modular assembly and easy installation;
- 02 独立设计，拆卸  
大规模系统故障的风险；  
Independent designed, remove the risk of massive system failure;
- 03 回转支承驱动，智能化夜间返回控制；  
Slewing supporting drive and intelligent self night return control;
- 04 严格的抗灾设计和有效的网络监控。  
Strict resist natural disaster design and effective network monitoring.



驱动器详细示意图  
Detailed diagram of the drive





系统概述 Overview of the system

### 基本技术参数

系统: 水平单轴跟踪系统  
控制方式: 时间控制/MPPT智能跟踪 $\leq 0.2^\circ$   
容量(直流): 24-30kw  
每排模块:  $\leq 88$ 个  
增加产量: 10%25% (可定制)  
旋转角度:  $-45\sim 45$   
防护等级: IP65

### 机械参数

驾驶模式: 自驾  
电机功率: 直流: 24伏  
日耗电量:  $< 1$ kWh  
材质: 热镀锌钢、铝合金  
模块类型: 晶体/薄膜/双层玻璃模块  
离地间隙:  $> 500$  mm  
基础: 打桩桩/混凝土地下室  
最大风阻: 140km/h  
安全回风平风速:  $< 68$ km/h  
机械寿命/保证:  $> 20/5$  (y)  
MOTO寿命/保证:  $> 10/2$  (y)  
工作温度:  $-40\sim 60^\circ\text{C}$

### Basic Technical Parameter

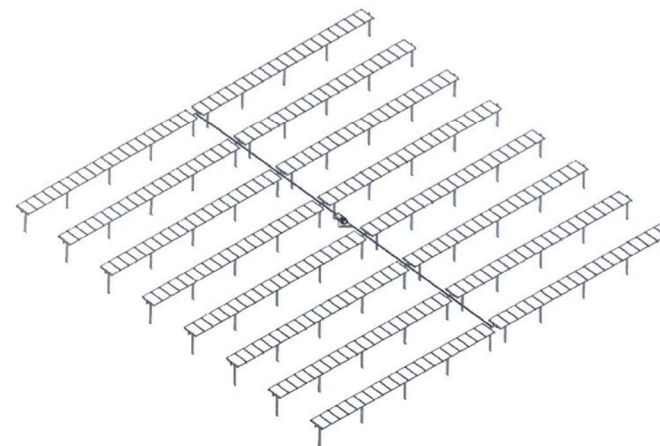
System: Horizontal single-axis tracking system  
Control Mode: Time control/MPPT intelligence tracking $\leq 0.2^\circ$   
Capacity(DC): 24-30KW  
Module Per Row: $\leq 88$  PCS  
Increased Output: 10%25%(May customized)  
Rotation Angle:  $-45\sim 45$   
IP Protection: IP65

### Mechanical Parameter

Driving Mode: Self driving  
Moto Power:DC: 24V  
Daily Power Consumption:  $< 1$ kwh  
Material: Hot dip galvanized steel, aluminum alloy  
Module Type: Crystalline/thin film/dou ble-glazed module  
Ground Clearance:  $> 500$ mm  
Foundation: Driven pile/concrete basement  
MAX. Wind Resistance: 140km/h  
Safe Return Flat Wind Speed:  $< 68$ km/h  
Mechanical Life/Guarantee:  $> 20/5$ (Y)  
Moto Life/Guarantee:  $> 10/2$ (Y)  
Working Tem: $-40\sim 60^\circ\text{C}$

## 水平单轴 联动跟踪系统 Horizontal single-axis linkage tracking system

- 01 机械结构, 模块化组装, 安装方便;  
Mechanical structure, modular assembly and easy installation;
- 02 成本效益高, 集中设计, 提高维修效率,  
节约人工操作成本;  
cost-effective, centralized designed to improve maintenance efficiency and save labor operation cost;
- 03 回转支承驱动, 智能化夜间返回控制;  
Slewing supporting drive and intelligent self night return control;
- 04 故障点少, 耗电少;  
Fewer points of failure, less power consumption;
- 05 严格抗灾设计和有效的网络监控。  
Strict resist natural disaster design and effective network monitoring



系统概述 Overview of the system



# MOUNTING BROCHURE

## 导轨系列 / Guide Series

JX-DG001

米重: 0.473kg

JX-DG001-加厚

米重: 0.587kg

JX-DG002

米重: 0.70kg

JX-DG003

米重: 0.716kg

JX-DG004

米重: 0.76kg

JX-DG005

米重: 0.903kg

JX-DG006

米重: 1.142kg

JX-DG007

米重: 1.305kg

JX-DG008

米重: 0.72kg

JX-DG009

米重: 0.575kg

## 导轨系列 / Guide Series

JX-DG010

米重: 0.899kg

JX-DG011

米重: 0.81kg

JX-DG012

米重: 0.832kg

JX-DG013

米重: 0.66kg

JX-DG014

米重: 0.7kg

JX-DG015

米重: 0.67kg

JX-DG016

米重: 1.387kg

JX-DG017


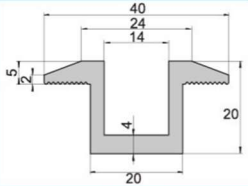
米重: 1.744kg



# MOUNTING BROCHURE

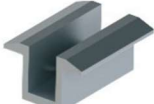
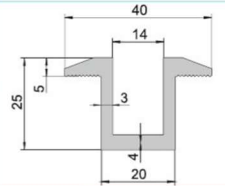
## 中压块系列 / Press Block Series

JX-ZY001


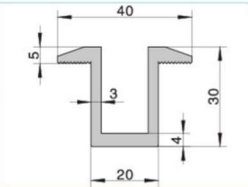
米重: 0.668kg

JX-ZY002


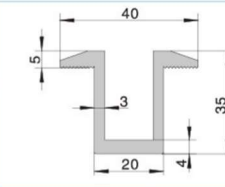
米重: 0.748kg

JX-ZY003


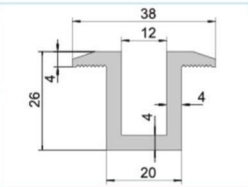
米重: 0.827kg

JX-ZY004

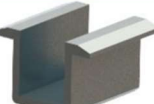
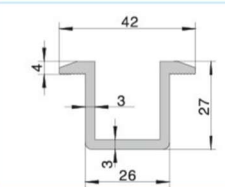
米重: 0.91kg

JX-ZY005


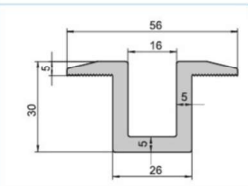
米重: 0.842kg

JX-ZY006

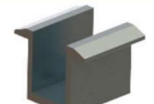
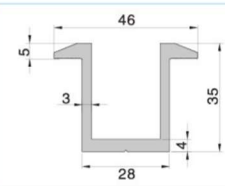
米重: 0.739kg

JX-ZY007

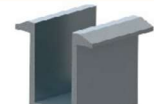
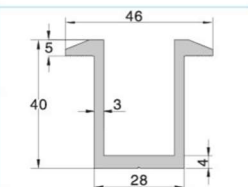
米重: 1.362kg

JX-ZY008


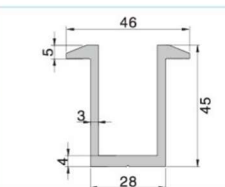
米重: 1.0kg

JX-ZY009

米重: 1.06kg


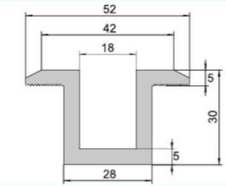
JX-ZY010

米重: 1.16kg


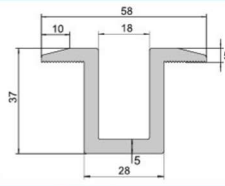
## 中压块系列 / Press Block Series

JX-ZY011


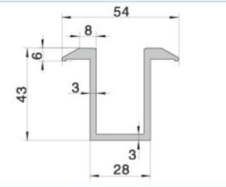
米重: 1.328kg

JX-ZY012

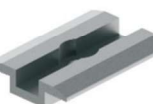
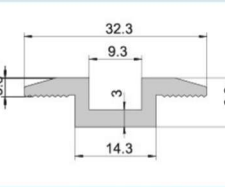
米重: 1.58kg

JX-ZY013

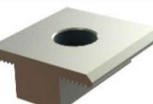
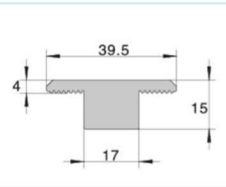
米重: 1.136kg

JX-ZY014

米重: 0.319kg

JX-ZY015

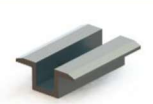
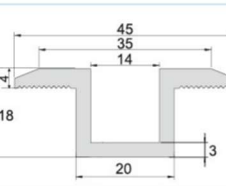
米重: 0.909kg

JX-ZY016



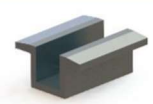
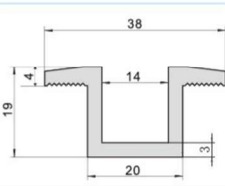

米重: 0.917kg

JX-ZY017

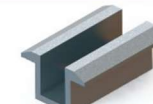
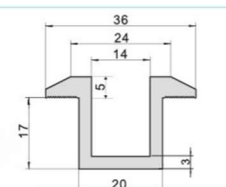
米重: 0.634kg

JX-ZY018


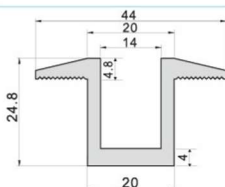
米重: 0.59kg

JX-ZY019

米重: 0.627kg

JX-ZY020

米重: 0.758kg



# MOUNTING BROCHURE

## 中压块系列 / Press Block Series

JX-ZY021

米重: 1.036kg

JX-ZY022

米重: 1.142kg

JX-ZY023

米重: 1.702kg

JX-ZY024

米重: 1.001kg

JX-ZY025

米重: 0.403kg

JX-ZY026

米重: 0.908kg

JX-ZY027

米重: 0.629kg

JX-ZY028

米重: 0.705kg

JX-ZY029

米重: 0.789kg

JX-ZY030

米重: 0.452kg

JX-ZY031

米重: 0.785kg

JX-ZY032

米重: 0.639kg

JX-ZY033

米重: 0.78kg

JX-ZY034

米重: 0.816kg

## 边压块系列 / Press Block Series

JX-BY001

米重: 0.699kg

JX-BY002

米重: 0.753kg

JX-BY003

米重: 0.807kg

JX-BY004

米重: 0.861kg

JX-BY005

米重: 0.741kg

JX-BY006

米重: 0.782kg





# MOUNTING BROCHURE

## 边压块系列 / Press Block Series

JX-BY007

米重: 0.822kg

JX-BY008

米重: 0.863kg

JX-BY009

米重: 0.661kg

JX-BY010

米重: 0.7kg

JX-BY011

米重: 0.74kg

JX-BY012

米重: 1.153kg

JX-BY013

米重: 1.22kg

JX-BY014

米重: 1.287kg

JX-BY015

米重: 0.51kg

JX-BY016

米重: 0.777kg

## 边压块系列 / Press Block Series

JX-BY017

米重: 0.961kg

JX-BY018

米重: 1.129kg

JX-ZY019-1A

米重: 0.743kg

JX-BY019-1B

米重: 0.575kg

JX-ZY020-1A

米重: 0.923kg

JX-BY020-1B

米重: 0.737kg

JX-ZY021-1A

米重: 0.779kg

JX-BY021-1B

米重: 0.626kg

JX-BY022

米重: 0.623kg

JX-BY023

米重: 0.58kg



# MOUNTING BROCHURE

## 边压块系列 / Press Block Series

**JX-BY024**

米重: 0.839kg

**JX-BY025**

米重: 0.798kg

**JX-BY026**

米重: 0.862kg

**JX-BY027**

米重: 1.061kg

**JX-BY028**

米重: 0.568kg

**JX-BY029**

米重: 0.608kg

**JX-BY030**

米重: 0.856kg

**JX-BY031**

米重: 0.436kg

**JX-BY032**

米重: 0.797kg

**JX-BY033**

米重: 0.802kg

## 边压块系列 / Press Block Series

**JX-ZY034-1A**

米重: 0.922kg

**JX-BY034-1B**

米重: 0.79kg

**JX-ZY035-1A**

米重: 0.885kg

**JX-BY035-1B**

米重: 0.642kg

**JX-ZY036-1A**

米重: 0.937kg

**JX-BY036-1B**

米重: 0.666kg

## 角铝系列

**JX-50\*50\*5.6**

米重: 1.426kg

**JX-50\*50\*4.8**

米重: 1.23kg

**JX-40\*40\*4**

米重: 0.821kg

**JX-40\*40\*3**

米重: 0.624kg



# MOUNTING BROCHURE

## 托板 / Plate

**JX-ZTB001-1A**

米重: 1.1kg

**JX-BTB001-1B**

米重: 0.921kg

**JX-ZTB002-1A**

米重: 1.62kg

**JX-BTB002-1B**

米重: 1.296kg

**JX-ZTB003-1A**

米重: 1.58kg

**JX-BTB003-1B**

米重: 1.327kg

**JX-ZTB004-1A**

米重: 1.06kg

**JX-BTB004-1B**

米重: 0.9kg

**JX-ZTB005-1A**

米重: 1.512kg

**JX-BTB005-1B**

米重: 1.264kg

## 夹具系列 / Clamp Series

**JX-JJ001**

米重: 2.618kg

**JX-JJ002**

米重: 1.915kg

**JX-JJ003**

米重: 1.329kg

**JX-JJ003加厚**

米重: 1.69kg

**JX-JJ004**

米重: 2.136kg

**JX-JJ005**

米重: 1.7kg

**JX-JJ006**

米重: 1.975kg

**JX-JJ007**

米重: 2.02kg

**JX-JJ008**

米重: 2.489kg

**JX-JJ009**


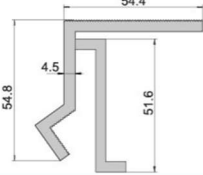
米重: 2.608kg



# MOUNTING BROCHURE


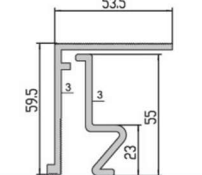
## 夹具系列 / Clamp Series

JX-JJ010


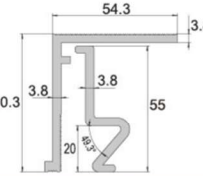
米重: 2.013kg

JX-JJ011-A


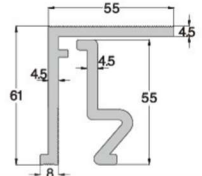
米重: 1.59kg

JX-JJ011-B


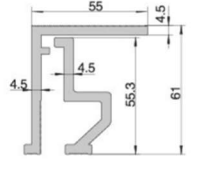
米重: 1.985kg

JX-JJ011-C


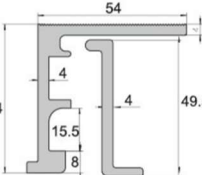
米重: 2.363kg

JX-JJ012


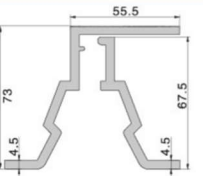
米重: 2.467kg

JX-JJ013


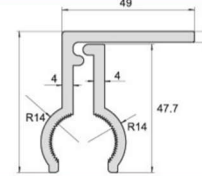
米重: 2.14kg

JX-JJ014


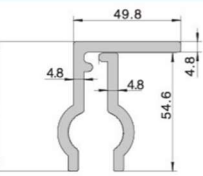
米重: 3.016kg

JX-JJ015

米重: 1.674kg

JX-JJ016

米重: 2.288kg


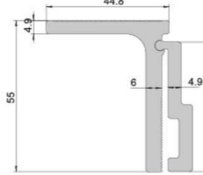
JX-JJ017




米重: 3.021kg


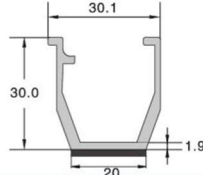
## 夹具系列 / Clamp Series

JX-JJ018

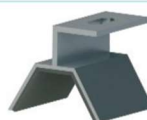
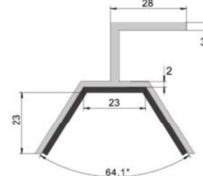
米重: 2.13kg

JX-JJ019


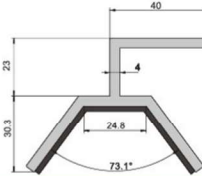
米重: 0.473kg

JX-JJ020


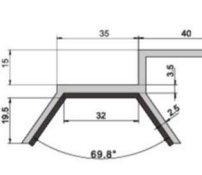
米重: 0.842kg

JX-JJ021


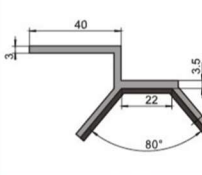
米重: 1.661kg

JX-JJ022


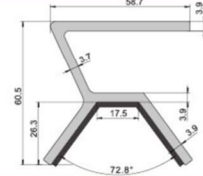
米重: 1.134kg

JX-JJ023


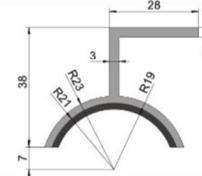
米重: 1.05kg

JX-JJ024


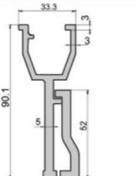
米重: 1.861kg

JX-JJ025


米重: 0.676kg

JX-JJ026

米重: 2.453kg

JX-JJ027




米重: 2.46kg



# MOUNTING BROCHURE

## 夹具系列 / Clamp Series

JX-JJ028

米重: 2.644kg

JX-JJ029

米重: 2.374kg

JX-JJ030

米重: 2.679kg

JX-JJ031

米重: 1.206kg

JX-JJ032

米重: 1.153kg

JX-JJ033

米重: 1.21kg

JX-JJ034

米重: 1.214kg

JX-JJ035

米重: 1.438kg

JX-JJ036

米重: 2.28kg

JX-JJ037

米重: 1.558kg

## 夹具系列 / Clamp Series

JX-JJ038

米重: 1.641kg

JX-JJ039

米重: 2.166kg

JX-JJ040

米重: 2.373kg

JX-JJ041

米重: 2.457kg

JX-JJ042

米重: 2.331kg

JX-JJ043

米重: 2.396kg

JX-JJ044

米重: 2.455kg

JX-JJ045

米重: 2.7kg

JX-JJ046

米重: 2.378kg

JX-JJ047


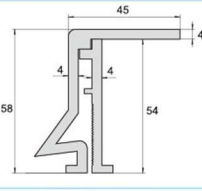
米重: 1.98kg



# MOUNTING BROCHURE


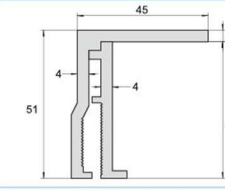
## 夹具系列 / Clamp Series

**JX-JJ048**


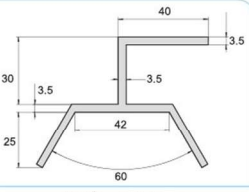
米重: 2.04kg

**JX-JJ049**


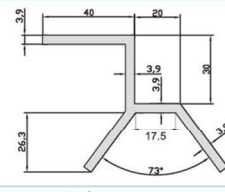
米重: 1.608kg

**JX-JJ050**


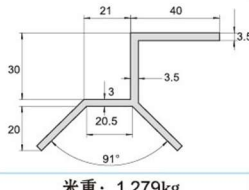
米重: 1.525kg

**JX-JJ051**


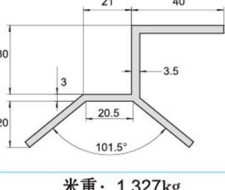
米重: 1.621kg

**JX-JJ052**



米重: 1.279kg

**JX-JJ053**


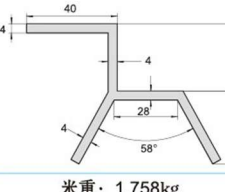
米重: 1.327kg

**JX-JJ054**


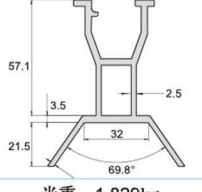
米重: 1.213kg

**JX-JJ055**


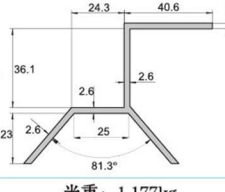
米重: 1.758kg

**JX-JJ056**

米重: 1.829kg


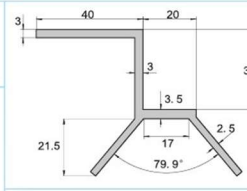
**JX-JJ057**

米重: 1.177kg


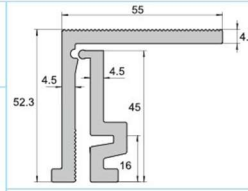
## 夹具系列 / Clamp Series

**JX-JJ058**


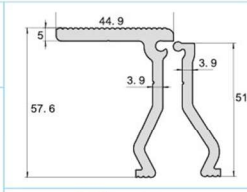
米重: 1.125kg

**JX-JJ059**


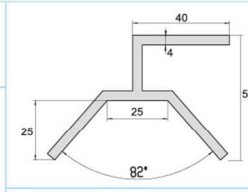
米重: 2.11kg

**JX-JJ060**


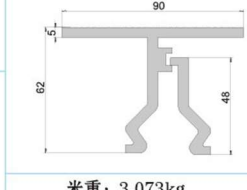
米重: 1.88kg

**JX-JJ061**


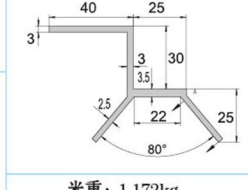
米重: 1.663kg

**JX-JJ062**


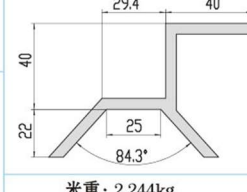
米重: 3.073kg

**JX-JJ063**


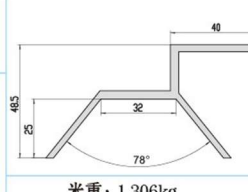
米重: 1.172kg

**JX-JJ064**


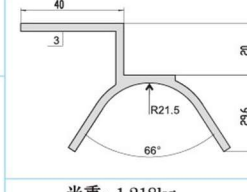
米重: 2.244kg

**JX-JJ065**


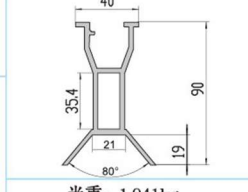
米重: 1.306kg

**JX-JJ066**

米重: 1.218kg

**JX-JJ067**

米重: 1.941kg



# MOUNTING BROCHURE

## 夹具系列 / Clamp Series

**JX-JJ068**

米重: 2.583kg

**JX-JJ069**

米重: 2.805kg

**JX-JJ070**

米重: 2.027kg

**JX-JJ071**

米重: 2.41kg

**JX-JJ072**

米重: 1.783kg

**JX-JJ073**

米重: 1.703kg

**JX-JJ074**

米重: 2.207kg

**JX-JJ075**

米重: 1.54kg

## 滑块螺母

**JX-LM001**

米重: 0.58kg

**JX-LM002**

米重: 0.413kg

**JX-LM003**

米重: 0.415kg

**JX-LM004**

米重: 0.583kg

## 导轨连接件

**JX-LJ001**

米重: 0.75kg

**JX-LJ002**

米重: 0.47kg

**JX-LJ003**

米重: 0.309kg

**JX-LJ004**

米重: 0.371kg

**JX-LJ005**

米重: 0.58kg

**JX-LJ006**

米重: 0.58kg



# MOUNTING BROCHURE

## 弯钩 / hook

<p>JX-WG001</p>		
<p>可调直弯钩</p>		
<p>JX-WG002</p>		
<p>平弯钩</p>		

## 弯钩 / hook

<p>JX-WG003</p>		
<p>直弯钩</p>		
<p>JX-WG004</p>		
<p>直立侧弯钩</p>		