



SMART ENERGY/GREEN BUILDING SYSTEM INTEGRATOR

SENTA ENERGY

Senta Energy is located in Wuxi, the largest solar power industry base in China.

Senta Energy is a hi-tech enterprise mainly engaged in solar power and energy storage products, New building prefabricated houses and New agricultural distributed planting business.

Contact Us

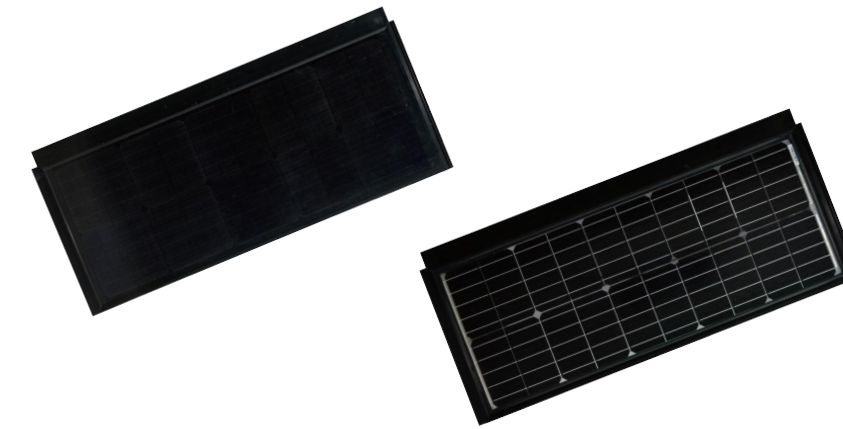
Website: www.sentaenergy.com

Telephone: +86 510 8359 2969

Mailbox: sales@sentaenergy.com

Address: RM.501,Bld.1,No.33 Zhihui Road,Huishan District,Wuxi,Jiangsu,China

ST055M6-20C / ST110M6-36C



Features

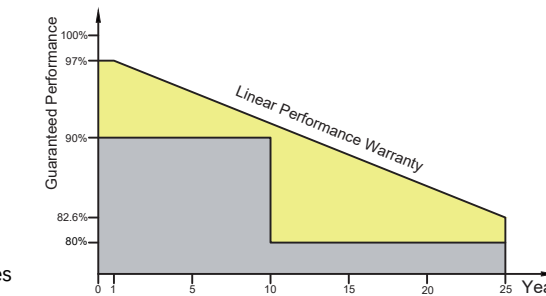
- The professional design in waterproof, resist of windstorm & hail
- Low voltages and fireproof materials can prevent any possibility of fire
- Lifespan is over 30 years with reliable encapsulating materials
- Decrease temperature 5~9°C on rooftop with solar tiles
- PID free, yield-optimized low-light performance
- Lightweight, compact and simple to install
- Install on original roof or to be part of it

Accessories

- Sunk screw: M4.8x30mm
- Sub structure: Wooden slats/steel tubes

Matching tiles

- Glass type (Uncuttable)
- PC type (Cuttable)



Relative efficiency level, at least 97% after first year, annual degradation max.0.6% afterward, at least 91.6% after 10years, and 82.6% after 25years.



Electrical Performance(STC:AM 1.5, 1000W/m², 25°C)

Module Type	ST055M6-20C	ST110M6-36C
Max. Power (P _{max} / Wp)	55	110
Power Tolerance	0 ~ +3%	0 ~ +3%
Max. Power Voltage (Vm / V)	11.2	22.4
Max. Power Current (Im / A)	4.92	4.92
Open Circuit Voltage (Voc / V)	13.4	26.8
Short Circuit Current (Isc / A)	5.18	5.18
Module Efficiency (%)	14.26	16.25
Array Efficiency (%)	17.49	18.26

Thermal Properties

Nominal Operating Cell Temp.	45±2 °C
Temperature Coefficient Voc	-0.26%/°C
Temperature Coefficient Isc	+0.056%/°C
Temperature Coefficient Pm	-0.36%/°C

Operation Conditions

Operating Temperature	-40 ~ +85 °C	
Max. System Voltage	1000 V	
Max. Series Fuse Rating	10 A	
Max. Wind & Snow Loads	2400 Pa	5400 Pa
Hail Resistance Class	Class 4 (Ø 40mm at 23m/s)	
Application Class	Class A	
Fire Safety Class	Class C (IEC61730)	

Mechanical Properties

Product Dimensions (mm)	899×429×10	899×753×10
Array Dimensions (mm)	886×355	886×680
Roof Batten Distance (mm)	355~375	680~700
Roof Batten Size (mm)	W & H < 40	
Array Head-lap Size (mm)	50~75	
Weight (Kgs)	3.8	7.2
No. of Cells	20 (2×10)	40 (4×10)
Solar Cells	Monocrystalline 158.75×79.37	
Glass	3.2mm tempered glass	
Frame	Anodized aluminum/Black	
Encapsulation	EVA (UV+IR+)	
Junction Box	IP 67, 1/2 bypass diodes	
Cable & Connector	2.5mm ² , 50cm, MC4 compatible	
Roof Pitch Range (°)	15~60	
Units Per Sqrm (pcs/m ²)	3.18	1.66
Power Per Sqrm (Wp/m ²)	175	183

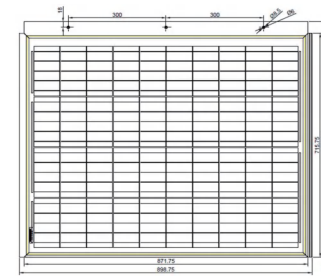
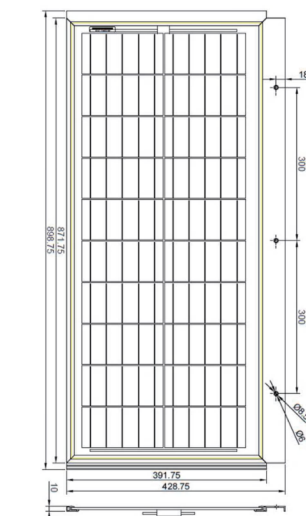
Packing Configuration

Container Size	20GP	40HQ
Pieces/pallet	50	50
Pallets/Container	40/24	96/46
Pieces/Container	2000/1200	4800/2400

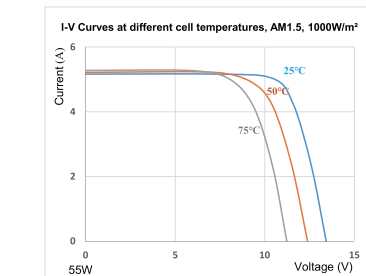
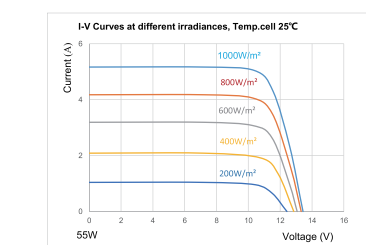
Notes

ST055M6-20C-SGXH/V, X=B-Black/W-White/T-Transparent, H-Horizontal, V-Vertical

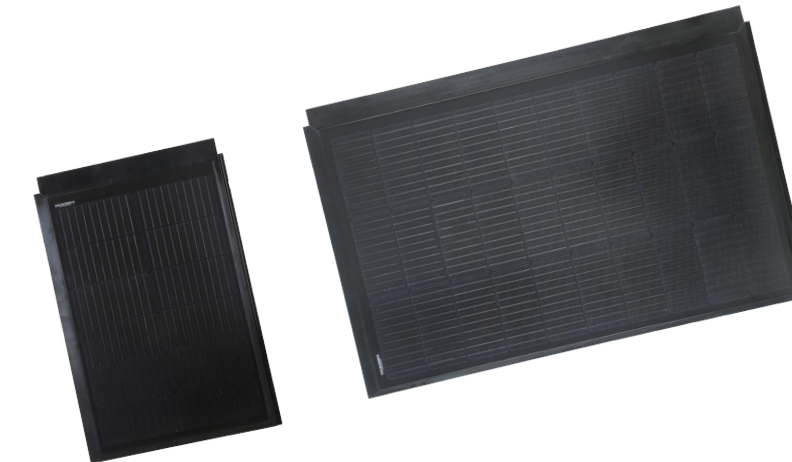
Technical Drawing



I-V Curves



ST045M6-20C / ST075M6-36C / ST110M6-36C



Features

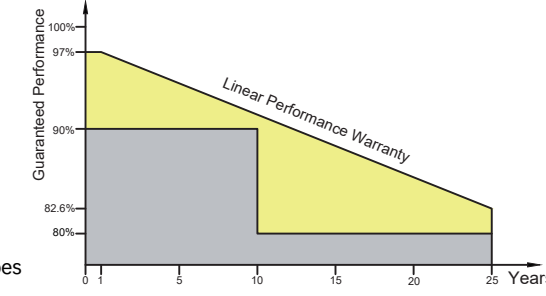
- The professional design in waterproof, resist of windstorm & hail
- Low voltages and fireproof materials can prevent any possibility of fire
- Lifespan is over 30 years with reliable encapsulating materials
- Decrease temperature 5~9°C on rooftop with solar tiles
- PID free, yield-optimized low-light performance
- Lightweight, compact and simple to install
- Install on original roof or to be part of it

Accessories

- Sunk screw: M4.8x30mm
- Sub structure: Wooden slats/steel tubes

Matching tiles

- Glass type (Uncuttable)
- PC type (Cuttable)



Relative efficiency level, at least 97% after first year, annual degradation max.0.6% afterward, at least 91.6% after 10years, and 82.6% after 25years.



Electrical Performance(STC:AM 1.5, 1000W/m², 25°C)

Module Type	ST045M6-20C	ST075M6-36C	ST110M6-36C
Max. Power (P _{max} / Wp)	45	75	110
Power Tolerance	0 ~ +3%	0 ~ +3%	0 ~ +3%
Max. Power Voltage (Vm / V)	7.0	11.7	17.1
Max. Power Current (Im / A)	6.45	6.45	6.45
Open Circuit Voltage (Voc / V)	8.1	13.6	19.8
Short Circuit Current (Isc / A)	6.78	6.78	6.78
Module Efficiency (%)	15.28	15.51	16.38
Array Efficiency (%)	17.7	18.63	18.70

Thermal Properties

Nominal Operating Cell Temp.	45±2 °C
Temperature Coefficient Voc	-0.30%/°C
Temperature Coefficient Isc	+0.06%/°C
Temperature Coefficient Pm	-0.39%/°C

Operation Conditions

Operating Temperature	-40 ~ +85 °C		
Max. System Voltage	1000 V		
Max. Series Fuse Rating	10 A		
Max. Wind & Snow Loads	2400 Pa/5400 Pa		
Hail Resistance Class	Class 4 (Ø 40mm at 23m/s)		
Application Class	Class A		
Fire Safety Class	Class C (IEC61730)		

Mechanical Properties

Product Dimensions (mm)	665×443×10	1016×476×10	1016×661×10
Array Dimensions (mm)	590×431	1004×401	1004×586
Roof Batten Distance (mm)	590~610	401~421	586~606
Roof Batten Size (mm)	W & H < 40		
Array Head-lap Size (mm)	55~75		
Weight (Kgs)	2.8	5.3	8.1
No. of Cells	12 (2×6)	20 (2×10)	30 (3×10)
Solar Cells	Monocrystalline 182×91		
Glass	3.2mm tempered glass		
Frame	Anodized aluminum/Black		
Encapsulation	EVA (UV+IR+)		
Junction Box	IP 67, 1 bypass diodes		
Cable & Connector	2.5mm ² , 60cm, MC4 compatible		
Roof Pitch Range (°)	15~60		
Units Per Sqrm (pcs/m ²)	3.93	2.48	1.7
Power Per Sqrm (Wp/m ²)	176.8	186	187

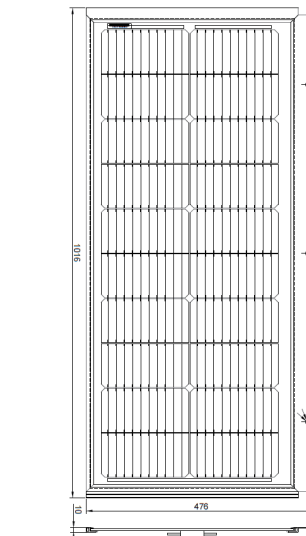
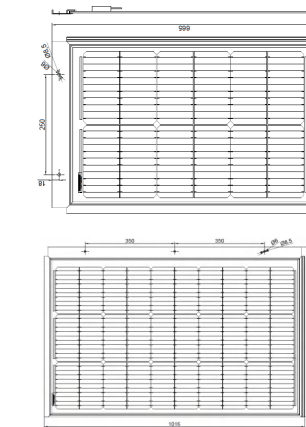
Packing Configuration

Container Size	20GP	40HQ
Pieces/pallet	100/(50+24)	100/50/50
Pallets/Container	24/30/(20+10)	48/66/66
Pieces/Container	2400/1500/1240	4800/3300/3300

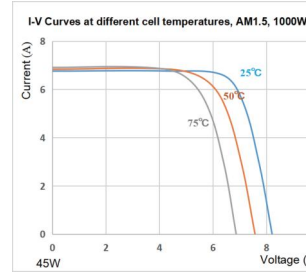
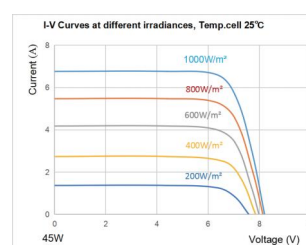
Notes

ST045M6-20C-SGXH/V, X=B-Black/W-White/T-Transparent, H-Horizontal, V-Vertical

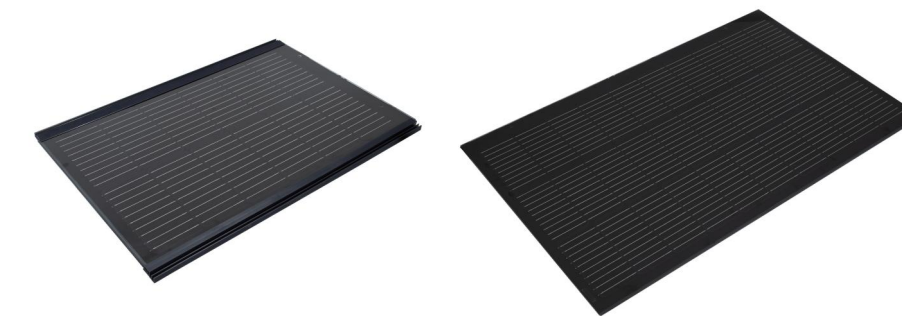
Technical Drawing



I-V Curves



ST045M6-20CD / SST110M6-36CD



Features

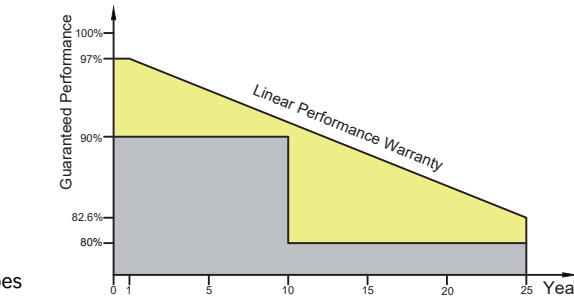
- The professional design in waterproof, resist of windstorm & hail
- Low voltages and fireproof materials can prevent any possibility of fire
- Lifespan is over 30 years with reliable encapsulating materials
- Decrease temperature 5~9°C on rooftop with solar tiles
- PID free, yield-optimized low-light performance
- Double glasses, compact and simple to install
- Install on original roof or to be part of it

Accessories

- Sunk screw: M4.8x30mm
- Sub structure: Wooden slats/steel tubes

Accessories

- Glass type (Uncuttable)



Relative efficiency level, at least 97% after first year, annual degradation max.0.6% afterward, at least 91.6% after 10years, and 82.6% after 25years.



Electrical Performance(STC:AM 1.5, 1000W/m², 25°C)

Module Type	ST045M6-20CD	SST110M6-36CD
Max. Power (P _{max} / Wp)	45	110
Power Tolerance	0 ~ +3%	0 ~ +3%
Max. Power Voltage (Vm / V)	7.0	17.1
Max. Power Current (Im / A)	6.45	6.45
Open Circuit Voltage (Voc / V)	8.1	19.8
Short Circuit Current (Isc / A)	6.78	6.78
Module Efficiency (%)	16.28	17.25
Array Efficiency (%)	17.7	18.14

Thermal Properties

Nominal Operating Cell Temp.	45±2 °C
Temperature Coefficient Voc	-0.30%/°C
Temperature Coefficient Isc	+0.06%/°C
Temperature Coefficient Pm	-0.39%/°C

Operation Conditions

Operating Temperature	-40 ~ +85 °C	
Max. System Voltage	1000 V	
Max. Series Fuse Rating	10 A	
Max. Wind & Snow Loads	2400 Pa/5400 Pa	
Hail Resistance Class	Class 4 (Ø 40mm at 23m/s)	
Application Class	Class A	
Fire Safety Class	Class C (IEC61730)	

Mechanical Properties

Product Dimensions (mm)	624×443×15	1022×624×15
Array Dimensions (mm)	590×431	1009×601
Roof Batten Distance (mm)	590~600	586~606
Roof Batten Size (mm)	W & H < 40	
Array Head-lap Size (mm)	22~36	
Weight (Kgs)	5.5	13.2
No. of Cells	12 (2×6)	30 (3×10)
Solar Cells	Monocrystalline 182×91	
Glass	4+4mm double tempered glasses	
Frame	Anodized aluminum/Black	
Encapsulation	PVB (UV+IR+)	
Junction Box	IP 67, 1 bypass diodes	
Cable & Connector	2.5mm ² , 25/55cm, MC4 compatible	
Roof Pitch Range (°)	15~60	
Units Per Sqrm (pcs/m ²)	3.93	1.65
Power Per Sqrm (Wp/m ²)	176.8	181.5

Packing Configuration

Container Size	20GP	40HQ
Pieces/pallet	100/(50+24)	100/50
Pallets/Container	24/(20+10)	48/66
Pieces/Container	2400/1240	4800/3300

Notes

ST045M6-20CD-DGXV, X=B-Black/T-Transparent, H-Horizontal, SST110M6-20CD-DGXH, X=B-Black/T-Transparent, H-Horizontal

■ ST030M6-36C



Features

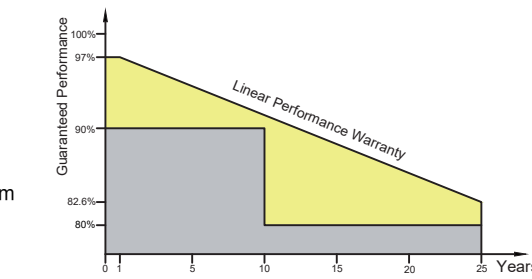
- The professional design in waterproof, resist of windstorm & hail
- Low voltages and fireproof materials can prevent any possibility of fire
- Lifespan is over 30 years with reliable encapsulating materials
- Decrease temperature 5~9°C on rooftop with solar tiles
- PID free, yield-optimized low-light performance
- Double glasses, compact and simple to install
- Install on original roof or to be part of it

Accessories

- Sunk screw M5x20mm, Rubber screw sheath
- Stainless steel gasket 2mm, Rubber gasket 1mm
- Hook bracket
- Sub structure: Wooden slats/steel tubes

Accessories

- Ceramic type (Cuttable)



Relative efficiency level, at least 97% after first year, annual degradation max.0.6% afterward, at least 91.6% after 10years, and 82.6% after 25years.

Electrical Performance(STC:AM 1.5, 1000W/m², 25°C)

Module Type	ST030M6-36C
Max. Power (Pmax / Wp)	30
Power Tolerance	0 ~ +3%
Max. Power Voltage (Vm / V)	8.6
Max. Power Current (Im / A)	3.52
Open Circuit Voltage (Voc / V)	10.6
Short Circuit Current (Isc / A)	4.09
Module Efficiency (%)	8.56
Aarry Efficiency (%)	10.64

Thermal Properties

Nominal Operating Cell Temp.	45±2 °C
Temperature Coefficient Voc	-0.36%/°C
Temperature Coefficient Isc	+0.056%/°C
Temperature Coefficient Pm	-0.36%/°C

Operation Conditions

Operating Temperature	-40 ~ +85 °C
Max. System Voltage	1000 V
Max. Series Fuse Rating	10 A
Max. Wind & Snow Loads	2400 Pa 5400 Pa
Hail Resistance Class	Class 4 (∅ 40mm at 23m/s)
Application Class	Class A
Fire Safety Class	Class C. (IEC61730)

Mechanical Properties

Product Dimensions (mm)	500×718×10(41)
Array Dimensions (mm)	400×705
Roof Batten Distance (mm)	400-425
Roof Batten Size (mm)	W & H<40
Array Head-lap Size (mm)	70-100
Weight (Kgs)	10
No. of Cells	1
Solar Cells	CIGS
Glass	4+4mm tempered glass
Frame	Anodized aluminum/Black
Encapsulation	PVB (UV+/IR+)
Junction Box	IP 67, 1 bypass diodes
Cable & Connector	2.5mm ² , 45cm, MC4 compatible
Roof Pitch Range (°)	15~60
Units Per Sqrm (pcs/m ²)	3.55
Power Per Sqrm (Wp/m ²)	106.5

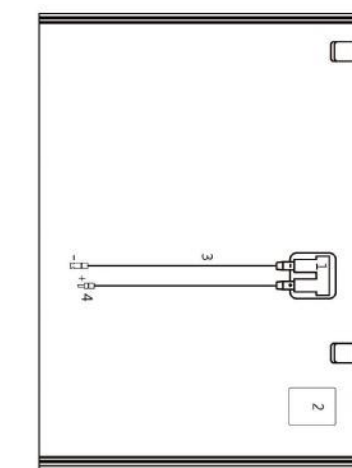
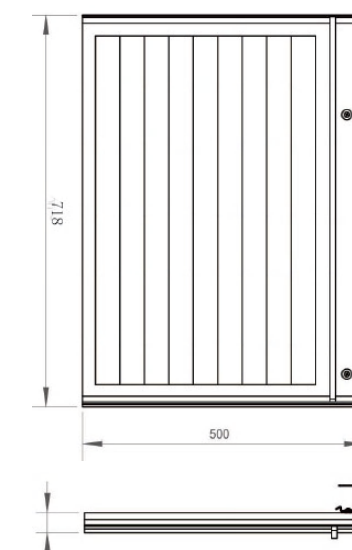
Packing Configuration

Container Size	20GP	40HQ
Pieces/pallet	52	52
Pallets/Container	14	30
Pieces/Container	728	1560

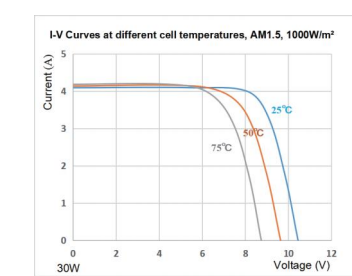
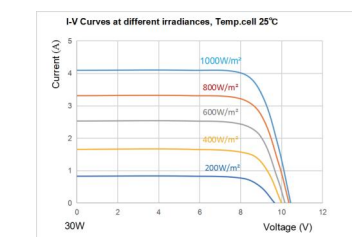
Notes

ST030M6-36C-DGXH, X=B-Black/G-Grey

Technical Drawing



I-V Curves



■ ST010M6-36C / ST030M6-36C



Features

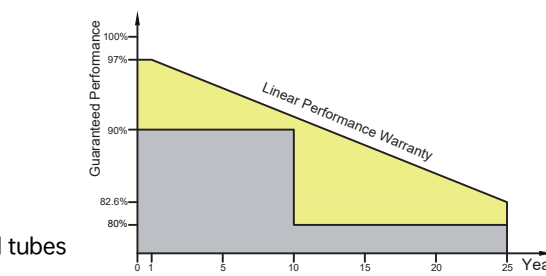
- The professional design in waterproof, resist of windstorm & hail
- Low voltages and fireproof materials can prevent any possibility of fire
- Lifespan is over 30 years with reliable encapsulating materials
- Decrease temperature 5~9°C on rooftop with solar tiles
- PID free, yield-optimized low-light performance
- Ceramic materials, compact and simple to install
- Install on original roof or to be part of it

Accessories

- Sunk screw: M4.8x35mm
- Sub structure: Wooden slats/steel tubes

Accessories

- Ceramic type (Cuttable)



Relative efficiency level, at least 97% after first year, annual degradation max.0.6% afterward, at least 91.6% after 10years, and 82.6% after 25years.

Electrical Performance(STC:AM 1.5, 1000W/m², 25°C)

Module Type	ST010M6-36C	ST030M6-36C
Max. Power (Pmax / Wp)	10	30
Power Tolerance	0 ~ +3%	0 ~ +3%
Max. Power Voltage (Vm / V)	1.11	3.32
Max. Power Current (Im / A)	9.05	9.05
Open Circuit Voltage (Voc / V)	1.34	3.99
Short Circuit Current (Isc / A)	9.51	9.51
Module Efficiency (%)	6.99	10.69
Aarry Efficiency (%)	9.42	13.15

Thermal Properties

Nominal Operating Cell Temp.	45±2 °C
Temperature Coefficient Voc	-0.26%/°C
Temperature Coefficient Isc	+0.056%/°C
Temperature Coefficient Pm	-0.36%/°C

Operation Conditions

Operating Temperature	-40 ~ +85 °C
Max. System Voltage	1000 V
Max. Series Fuse Rating	20 A
Max. Wind & Snow Loads	2400 Pa 5400 Pa
Hail Resistance Class	Class 4 (∅ 40mm at 23m/s)
Application Class	Class A
Fire Safety Class	Class A

Mechanical Properties

Product Dimensions (mm)	440×325×47	642×437×30
Array Dimensions (mm)	375×283	605×377
Roof Batten Distance (mm)	375~395	377~397
Roof Batten Size (mm)	W & H<30	
Array Head-lap Size (mm)	45~65	40~60
Weight (Kgs)	2.5	5.2
No. of Cells	2 (1×2)	6 (2×3)
Solar Cells	Monocrystalline 158.75×158.75	
Glass	3.2mm tempered glass	
Frame	Ceramic	
Encapsulation	EVA (UV+/IR+)	
Junction Box	IP 67, 1 bypass diodes	
Cable & Connector	2.5mm ² , 35/45cm, MC4 compatible	
Roof Pitch Range (°)	15~60	
Units Per Sqrm (pcs/m ²)	8.2	4.38
Power Per Sqrm (Wp/m ²)	82	131.4

Packing Configuration

Container Size	20GP	40HQ
Pieces/pallet	180/100	180/100
Pallets/Container	20/16	40/34
Pieces/Container	3600/1600	7200/3400

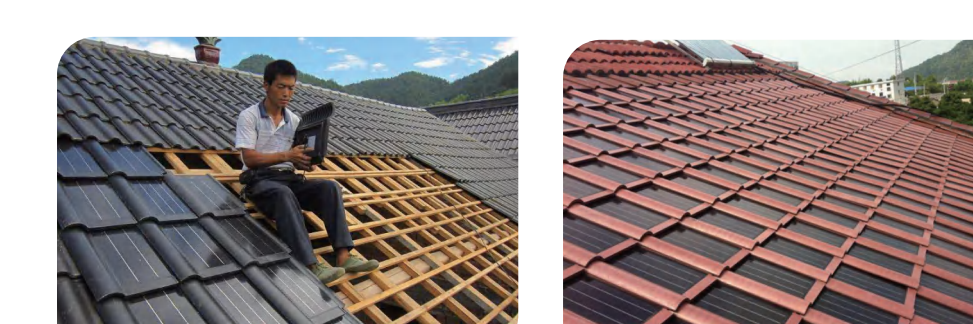
Notes

ST010M6-36C-SGXH/V, X=B-Block/R-Red/G-Grey/B-Blue/G-Golden, H-Horizontal, V-Vertical

Sentile Series



Hantile Series



Solar Tile Series

GOLDEN ROOF GOLDEN TILE

- Solar Tile-Sentile V1.0
- Solar Tile-Sentile V2.0
- Solar Tile-Sentile V3.0
- Solar Tile-Hantile V1.0
- Solar Tile-Hedtile V1.0