



## SMART ENERGY/GREEN BUILDING SYSTEM INTEGRATOR

### SENTA ENERGY

Senta Energy is located in Wuxi, the largest solar power industry base in China.

Senta Energy is a high-tech enterprise mainly engaged in solar power and energy storage products, new building prefabricated houses and new agricultural distributed planting business.

### Contact Us

Website: [www.sentaenergy.com](http://www.sentaenergy.com)  
 Telephone: +86 510 8359 2969  
 Mailbox: [sales@sentaenergy.com](mailto:sales@sentaenergy.com)  
 Address: RM.501, Bld.1, No.33 Zhihui Road, Huishan District, Wuxi, Jiangsu, China

### TC63-18 / TC73-21 / TC64-24



### Features

- Fast assembly, move easily, Lightweight, compact and simple to install
- Build with fireproof materials can prevent of fire
- Heat preservation, heat insulation, fire prevention, mobile and portable
- Lifespan is over 10 years with reliable encapsulating materials
- Dimensions and styles can be customized made
- Disassemble parts save much volume for transportation
- Eco, green house, and multifarious applications with multiple DIY ideas.
- Integrated with Solar, Lithium battery, PVT system, LED lights and intelligent housing systems



### Basic Properties

Module Type	TC63-18	TC73-21	TC64-24
Product Dimensions (L*W*H/mm)	6000×3000×2800	7000×3000×2800	6000×4000×3000
Max. Outside Area (m <sup>2</sup> )	18	21	24
Max. Inside Area (m <sup>2</sup> )	16.2	19.0	22.0
House Weight (Kgs)	1200	1350	1500
Description of House Materials	Same as container house		
Description of Windows & Doors	Can be customized made		
Max. Solar Panel on Roof (W)	3690	3690	4920
Max. Solar Tile on Roof (W)	3240	3780	4320
Type of Inverter	Off grid type (with AC back-up)		
Power of Inverter (kW)	3~6 (one phase)		
Type of Battery	Lithium battery (LiFePO4)		
Capacity of Battery (kWh)	3~20		
Type of Water Heater	PVT		
Volume of Water Tank (L)	150~250		
Intelligent Housing Systems	Can be customized configurate		
Other Furniture	Can be customized configurate		
Colors Available	Standard White Grey, Customized Red, Blue, Green, Camouflage, etc.		

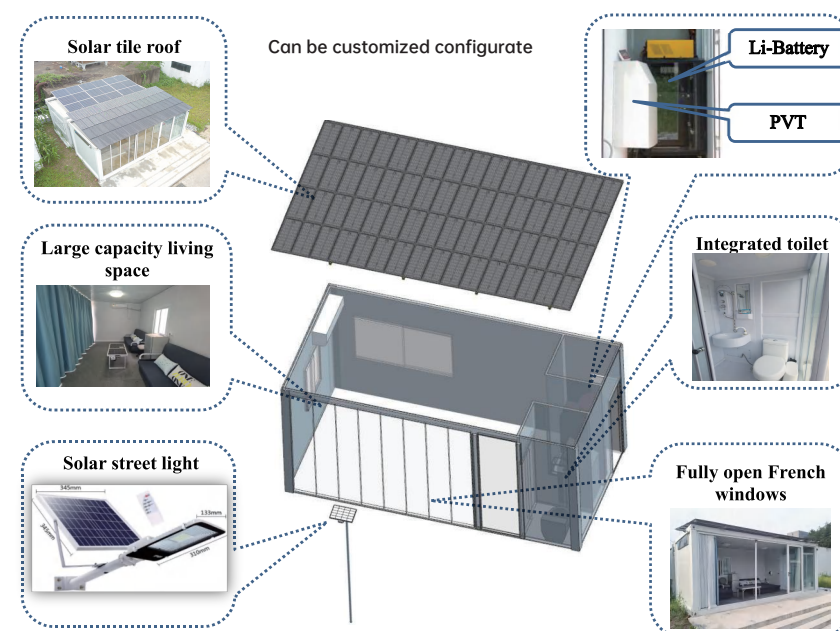
### Mechanical Properties

Warranty (Years)	2		
Life Span (Years)	≥10		

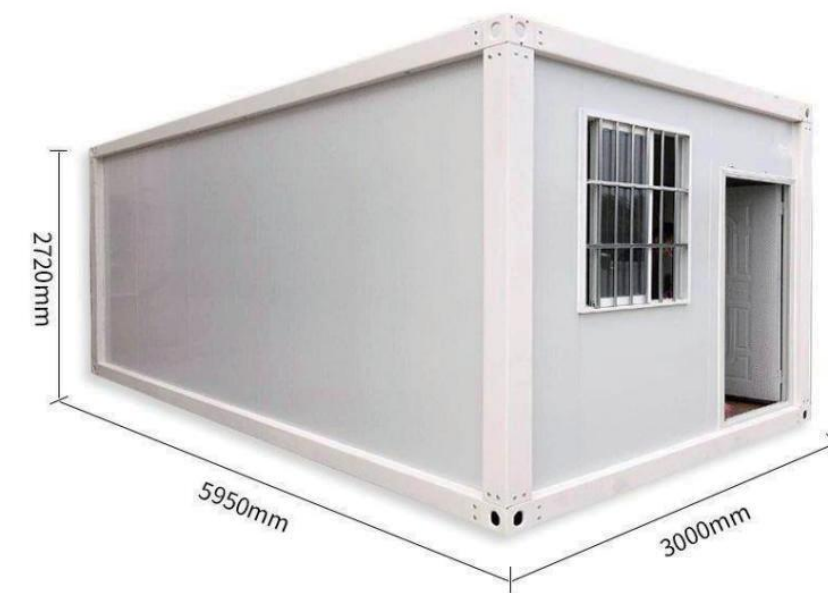
### Packing Configuration

Container Loading Qty (20GP)	7	0	7
Container Loading Qty (40HQ)	15	13	14

### Schematic Diagram



### CH33-09 / CH63-18 / CH73-21 / CH64-24



### Features

- Fast assembly, move easily, Lightweight, compact and simple to install
- Build with fireproof materials can prevent of fire
- Heat preservation, heat insulation, fire prevention, mobile and portable
- Lifespan is over 10 years with reliable encapsulating materials
- Dimensions and styles can be customized made
- Disassemble parts save much volume for transportation
- Eco, green house, and multifarious applications with multiple DIY ideas.
- Superimposable and free-combined to an intercommunicating or compound apartment.



### Basic Properties

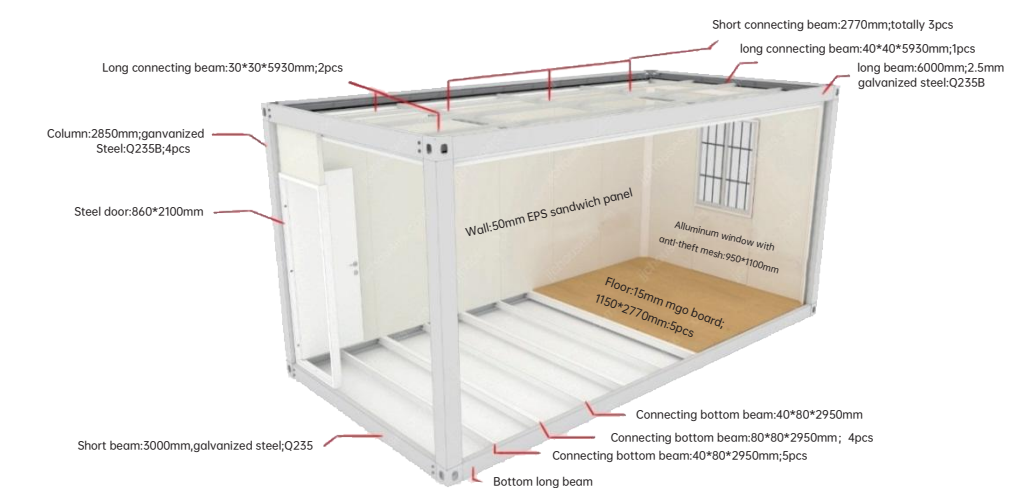
Module Type	CH33-09	CH63-18	CH73-21	CH64-24
Product Dimensions (L*W*H/mm)	3000×3000×2800	6000×3000×2800	7000×3000×2800	6000×4000×3000
Max. Outside Area (m <sup>2</sup> )	9	18	21	24
Max. Inside Area (m <sup>2</sup> )	7.8	16.2	19.0	22.0
Max. Outside Volume (m <sup>3</sup> )	25.2	50.4	58.8	72
Max. Inside Volume (m <sup>3</sup> )	20.2	42.1	49.4	61.6
Weight (Kgs)	900	1200	1350	1500
Description of Doors	2035*950mm / Painting steel with Bar Lock			
Description of Windows	1100*925mm / Double Galasses POM with Security Fence			
Description of Frames	2.3mm Stoving varnish steel			
Description of Wall Panels	50/75mm Rock Wool Sanwish Panel			
Description of Floors	16-18mm Fireproofing Mgo Board			
Description of Rooftiles	0.24-0.45mm Painting Steel			
Standard Configuration-Doors	1	1	1	1
Standard Configuration-Windows	1	2	2	2
Colors Available	Standard White Grey, Customized Red, Blue, Green, Camouflage, etc.			

### Mechanical Properties

Floor Live Load (KN/ m <sup>2</sup> )	2			
Roof Live Load (KN/ m <sup>2</sup> )	1			
Wind Load (KN/ m <sup>2</sup> )	0.6			
Aseismatic Level	8			
Fire-proofing Class	A			
Warranty (Years)	2			
Life Span (Years)	≥10			

### Packing Configuration

Packing Way	Bulk parts without pallets			
Container Loading Qty (20GP)	12	7	0	7
Container Loading Qty (40HQ)	25	15	13	14



Combined House V1.0



Features

- Fast assembly, move easily, Lightweight, compact and simple to install
- Build with fireproof materials can prevent of fire
- Heat preservation, heat insulation, fire prevention, mobile and portable
- Lifespan is over 10 years with reliable encapsulating materials
- Dimensions and styles can be customized made
- Disassemble parts save much volume for transportation
- Eco, green house, and multifarious applications with multiple DIY ideas
- Integrated with Solar, Lithium battery, PVT system, LED lights and intelligent housing systems



Project Headquarter V1.0



Features

- Fast assembly, move easily, Lightweight, compact and simple to install
- Build with fireproof materials can prevent of fire
- Heat preservation, heat insulation, fire prevention, mobile and portable
- Lifespan is over 10 years with reliable encapsulating materials
- Dimensions and styles can be customized made
- Disassemble parts save much volume for transportation
- Eco, green house, and multifarious applications with multiple DIY ideas
- Integrated with Solar, Lithium battery, PVT system, LED lights and intelligent housing systems



Fabricated Building Series

# SIMPLE HOUSE EASY LIFE

- Solar House
- Modular Container House
- Combined Container House
- Project Headquarter