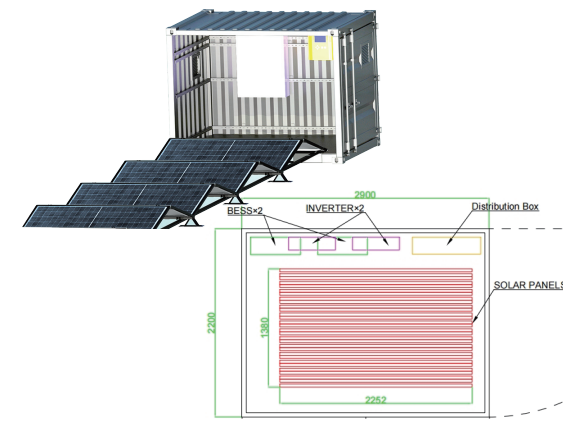
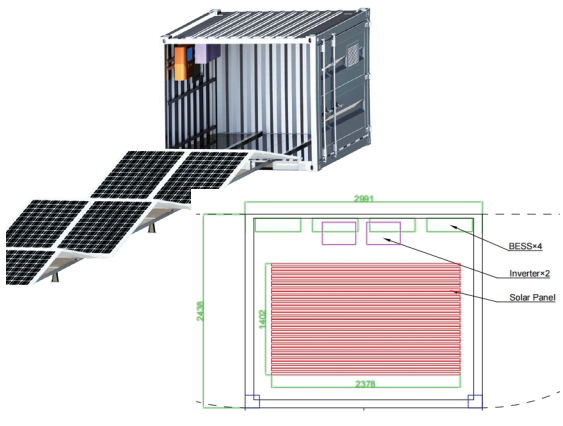


Power SPV — Solar PV Container (Rail Type)

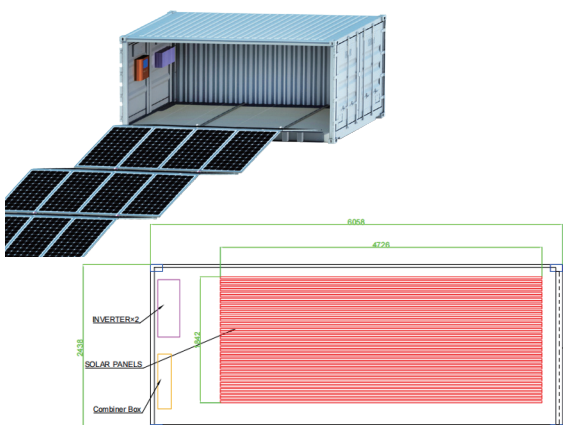
Parameter Configurations



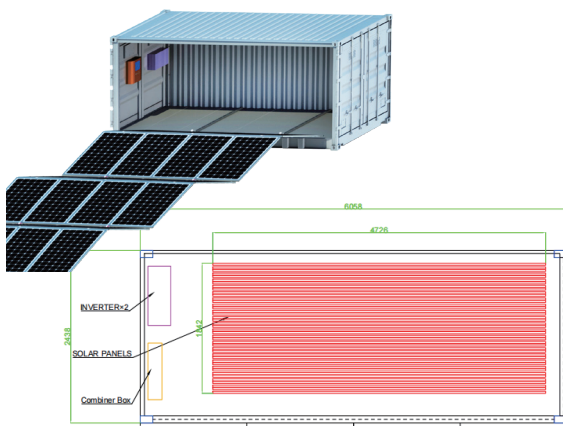
Whole System	
System Product Model	SC08GP-M-20K
Total Weight (Tons)	5
Type of Container	8GPF x1
Solar Array Capacity (Pmax / kWp)	22.68 (20~25)
Type of Solar Module (W)	630 x36 (550~650)
String Inverter (kW)	20 x1
Bracket (Number of Module per Sheet)	1 x36
Total Unfolded Footprint (L*W*H/m)	56*2.3(2.9)*0.6(2.2)
Occupied Area of Whole System (m ²)	126 (56*2.25)
Complete Unfolding Time (mins)	60
Complete Folding Time (mins)	50
Installation Persons	4



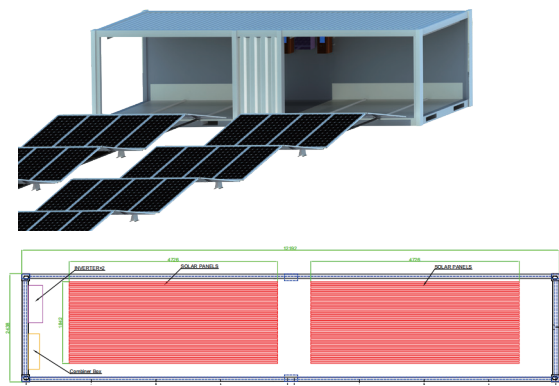
Whole System	
System Product Model	SC10GP-M-40K
Total Weight (Tons)	8
Type of Container	10GP x1
Solar Array Capacity (Pmax / kWp)	40.32 (40~45)
Type of Solar Module (W)	480 x84 (480~520)
String Inverter (kW)	40 x1
Bracket (Number of Module per Sheet)	2 x42
Total Unfolded Footprint (L*W*H/m)	89*2.4(3.0)*0.8(2.6)
Occupied Area of Whole System (m ²)	212 (89*2.38)
Complete Unfolding Time (mins)	80
Complete Folding Time (mins)	60
Installation Persons	4



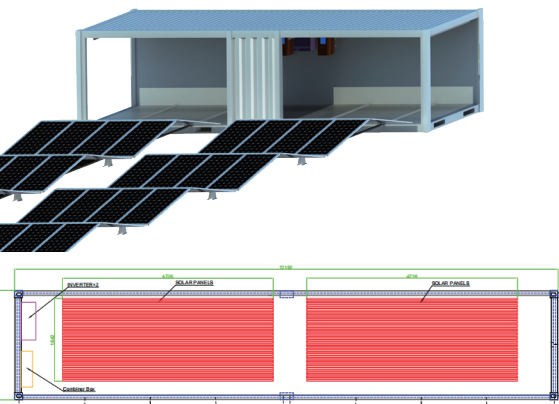
Whole System	
System Product Model	SC20GP-M-80K
Total Weight (Tons)	13
Type of Container	20GP x1
Solar Array Capacity (Pmax / kWp)	80.64 (80~90)
Type of Solar Module (W)	480 x168 (480~520)
String Inverter (kW)	80 x1
Bracket (Number of Module per Sheet)	4 x42
Total Unfolded Footprint (L*W*H/m)	89*4.7(6.0)*0.8(2.6)
Occupied Area of Whole System (m ²)	421 (89*4.73)
Complete Unfolding Time (mins)	120
Complete Folding Time (mins)	80
Installation Persons	4



Whole System	
System Product Model	SC20HQ-M-100K
Total Weight (Tons)	16
Type of Container	20HQ x1
Solar Array Capacity (Pmax / kWp)	99.96 (100~110)
Type of Solar Module (W)	595 x168 (585~650)
String Inverter (kW)	100 x1
Bracket (Number of Module per Sheet)	4 x42
Total Unfolded Footprint (L*W*H/m)	104*4.7(6.0)*0.9(2.9)
Occupied Area of Whole System (m ²)	492(104*4.73)
Complete Unfolding Time (mins)	150
Complete Folding Time (mins)	100
Installation Persons	4



Whole System	
System Product Model	SC40GP-M-160K
Total Weight (Tons)	27
Type of Container	40HQ x1
Solar Array Capacity (Pmax / kWp)	161.28 (160~180)
Type of Solar Module (W)	480 x336 (480~520)
String Inverter (kW)	80 x2
Bracket (Number of Module per Sheet)	4 x84
Total Unfolded Footprint (L*W*H/m)	89*10.5(12.0)*0.8(2.9)
Occupied Area of Whole System (m ²)	935 (89*10.5)
Complete Unfolding Time (mins)	180
Complete Folding Time (mins)	120
Installation Persons	6



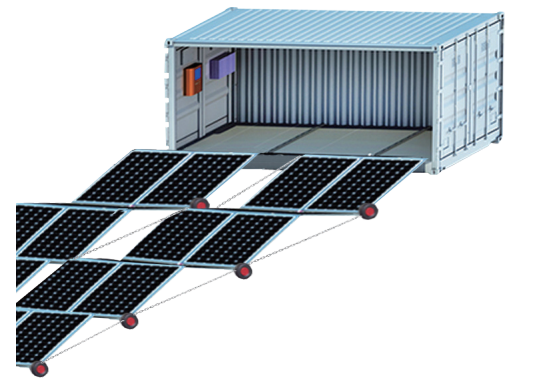
Whole System	
System Product Model	SC40HQ-M-200K
Total Weight (Tons)	32
Type of Container	40HQ x1
Solar Array Capacity (Pmax / kWp)	199.92 (200~230)
Type of Solar Module (W)	595 x336 (585~650)
String Inverter (kW)	100 x2
Bracket (Number of Module per Sheet)	4 x84
Total Unfolded Footprint (L*W*H/m)	104*10.5(12.0)*0.9(3.1)
Occupied Area of Whole System (m ²)	1092 (104*10.5)
Complete Unfolding Time (mins)	220
Complete Folding Time (mins)	150
Installation Persons	6

Power SPV — Solar PV Container (Wheel Type)

Parameter Configurations



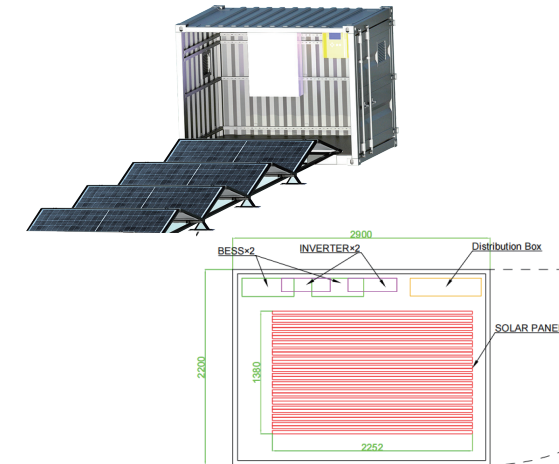
Whole System	
System Product Model	SC10GP-M-40K-W
Total Weight (Tons)	8.5
Type of Container	10GP x1
Solar Array Capacity (Pmax / kWp)	46.08 (46~50)
Type of Solar Module (W)	480 x96 (480~520)
String Inverter (kW)	40 x1
Bracket (Number of Module per Sheet)	2 x48
Total Unfolded Footprint (L*W*H/m)	103(34m*3rows)*2.38(3.0)*0.8(2.6)
Occupied Area of Whole System (m ²)	243 (34*2.38*3rows)
Complete Unfolding Time (mins)	70
Complete Folding Time (mins)	50
Installation Persons	4



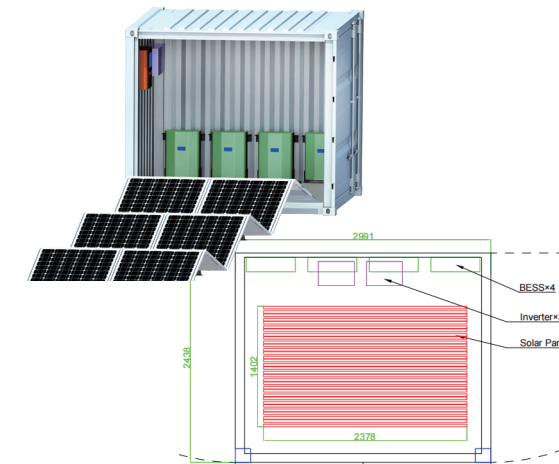
Whole System	
System Product Model	SC20GP-M-80K-W
Total Weight (Tons)	17
Type of Container	20GP x1
Solar Array Capacity (Pmax / kWp)	92.16 (90~105)
Type of Solar Module (W)	480 x192 (480~520)
String Inverter (kW)	80 x1
Bracket (Number of Module per Sheet)	2 x96
Total Unfolded Footprint (L*W*H/m)	103(34m*6rows)*2.38(3.0)*0.8(2.6)
Occupied Area of Whole System (m ²)	486 (34*2.38*6rows)
Complete Unfolding Time (mins)	110
Complete Folding Time (mins)	70
Installation Persons	4

Power SES — Solar ESS Container (Rail Type)

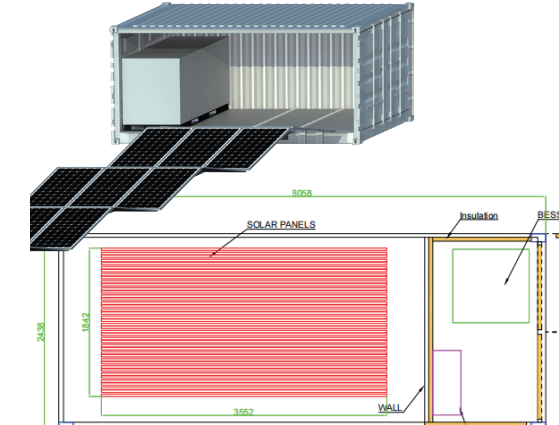
Parameter Configurations



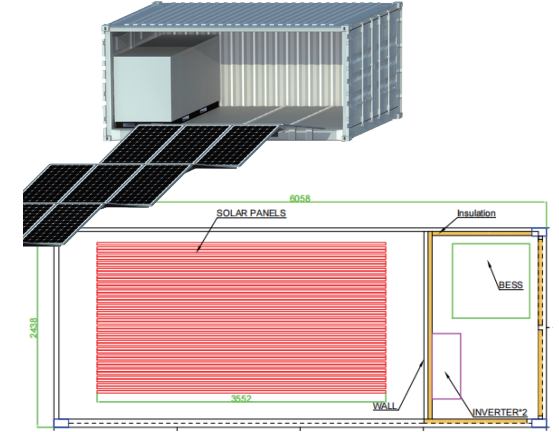
Whole System	
System Product Model	SC08GP-M-18K20
Total Weight (Tons)	5
Solar Array Capacity (Pmax / kWp)	18.9 (18~20)
Type of Solar Module (W)	630 x30 (550~650)
String Inverter (kW)	12 x2 Hybrid
Bracket (Number of Module per Sheet)	1x30
Lithium Battery Storage (kWh)	10.24 x2 (10~20)
Diesel Generator (KVA) (Optional)	5.5x1
Total Unfolded Footprint (L*W*H/m)	47*2.3(2.9)*0.6(2.2)
Occupied Area of Whole System (m ²)	106 (47*2.25)
Complete Unfolding Time (mins)	60
Complete Folding Time (mins)	50
Installation Persons	4



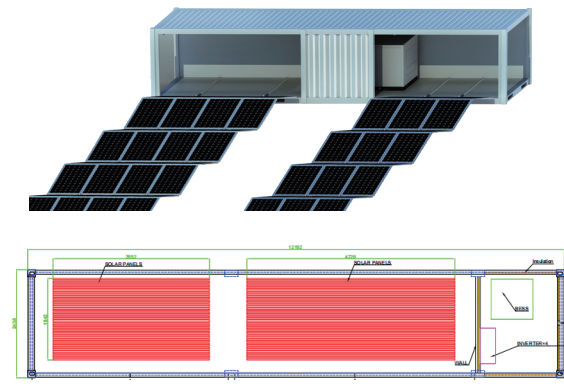
Whole System	
System Product Model	SC10GP-M-30K40
Total Weight (Tons)	7.5
Solar Array Capacity (Pmax / kWp)	30.72 (30~35)
Type of Solar Module (W)	480 x64 (480~520)
String Inverter (kW)	12 x2 Hybrid
Bracket (Number of Module per Sheet)	2 x32
Lithium Battery Storage (kWh)	10.24 x4 (10~20)
Diesel Generator (KVA) (Optional)	5.5x1
Total Unfolded Footprint (L*W*H/m)	70*2.4(3.0)*0.8(2.6)
Occupied Area of Whole System (m ²)	167 (70*2.38)
Complete Unfolding Time (mins)	80
Complete Folding Time (mins)	60
Installation Persons	4



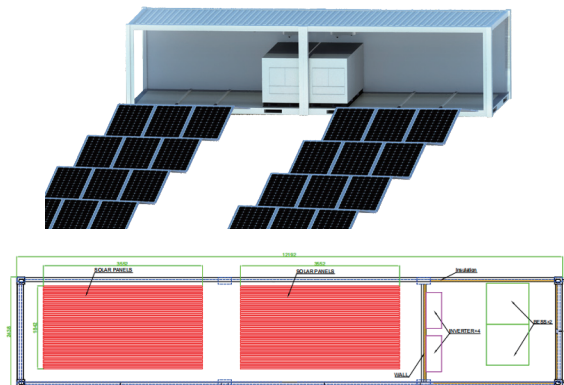
Whole System	
System Product Model	SC20GP-M-60K215
Total Weight (Tons)	13.5
Solar Array Capacity (Pmax / kWp)	60.48 (60~70)
Type of Solar Module (W)	480 x126 (480~520)
String Inverter (kW)	50x1 Hybrid/ 100 Off Grid
Bracket (Number of Module per Sheet)	3 x42
Lithium Battery Storage (kWh)	229 x1 (215~258)
Diesel Generator (KVA) (Optional)	13.8 x1
Total Unfolded Footprint (L*W*H/m)	89*3.6(6.0)*0.8(2.6)
Occupied Area of Whole System (m ²)	316 (89*3.56)
Complete Unfolding Time (mins)	120
Complete Folding Time (mins)	80
Installation Persons	4



Whole System	
System Product Model	SC20HQ-M-75K215
Total Weight (Tons)	16.5
Solar Array Capacity (Pmax / kWp)	74.97 (75~85)
Type of Solar Module (W)	595 x126 (585~650)
String Inverter (kW)	50x1 Hybrid/ 100 Off Grid
Bracket (Number of Module per Sheet)	3 x42
Lithium Battery Storage (kWh)	229 x1 (215~258)
Diesel Generator (KVA) (Optional)	13.8 x1
Total Unfolded Footprint (L*W*H/m)	104*3.6(6.0)*0.9(2.9)
Occupied Area of Whole System (m ²)	370 (104*3.55)
Complete Unfolding Time (mins)	150
Complete Folding Time (mins)	100
Installation Persons	4










System Product Model	SC40GP-M-140K215
Total Weight (Tons)	27
Solar Array Capacity (Pmax / kWp)	141.12 (140~160)
Type of Solar Module (W)	480 x294 (480~520)
String Inverter (kW)	50x2 Hybrid/ 100 Off Grid
Bracket (Number of Module per Sheet)	(4+3) x42
Lithium Battery Storage (kWh)	229 x1 (215~258)
Diesel Generator (KVA) (Optional)	13.8 x1
Total Unfolded Footprint (L*W*H/m)	89*9.3(12.0)*0.8(2.6)
Occupied Area of Whole System (m ²)	824 (89*9.25)
Complete Unfolding Time (mins)	180
Complete Folding Time (mins)	120
Installation Persons	6



System Product Model	SC40HQ-M-150K430
Total Weight (Tons)	32.5
Solar Array Capacity (Pmax / kWp)	149.94 (150~170)
Type of Solar Module (W)	595 x252 (585~650)
String Inverter (kW)	50x2 Hybrid/ 200 Off Grid
Bracket (Number of Module per Sheet)	(3+3) x42
Lithium Battery Storage (kWh)	229 x1 (215~258)
Diesel Generator (KVA) (Optional)	13.8 x1
Total Unfolded Footprint (L*W*H/m)	104*8(12.0)*0.9(2.9)
Occupied Area of Whole System (m ²)	832 (104*8)
Complete Unfolding Time (mins)	220
Complete Folding Time (mins)	150
Installation Persons	6

Application Scenario

 农业和水利 Agriculture and watermanagment Additional solar power supply for self-consumption to support existing generators	 偏远充电站 Remote charging stations Powering temporary off-grid charging stations	 工地和工业区 Construction sites and industrial areas Additional source of power for large and small construction sites	 救援和救灾 Emergency areas Provision of off-grid remote areas
 活动现场 Events and happenings Venues without a grid connection or to cover large peak loads.	 企业自用 Energy companies Support weak public network in time of increased energy consumption	 社区和难民区 Communities and refugee villages Solar power supply for self consumption with excess feed-in into the local grid	 采矿和军事 Mining and military application Island power plant for grid independent solar power supply in combination with energy storage

Case Sharing



① Transportation Way



② Hoisting in Position



③ Open & Assembly



④ Unfold Solar PV Array



⑤ Cable Installation



⑥ Final Operation



Version:2024 V2.1

Power BOX Series



Power SPV

Power SES



Borderland

Island

Desert

Disaster Area

Construction Site